

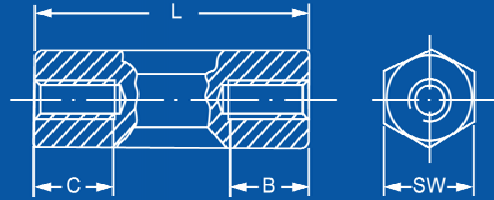
M2

Female - Female

Polyamide Max Temp 110°C



Dimensions in mm



L Length	Brass Nickel Plated				Polyamide							
	Part #	C	B	SW	Part #	C	B	SW				
4	10.2060.04	4	-	4								
5	10.2060.05	5	-	4								
6	10.2060.06	6	-	4	10.2062.06	3	3	5				
7	10.2060.07	7	-	4	10.2062.07	3.5	3.5	5				
8	10.2060.08	8	-	4	10.2062.08	4	4	5				
10	10.2060.10	10	-	4	10.2062.10	5	5	5				
12	10.2060.12	6	6	4	10.2062.12	6	6	5				
15	10.2060.15	6	6	4	10.2062.15	7.5	7.5	5				
18	10.2060.18	6	6	4	10.2062.18	9	9	5				
20	10.2060.20	6	6	4	10.2062.20	10	10	5				
25	10.2060.25	6	6	4	10.2062.25	10	10	5				
30	10.2060.30	6	6	4	10.2062.30	10	10	5				
35	10.2060.35	6	6	4	10.2062.35	10	10	5				
40	10.2060.40	6	6	4	10.2062.40	10	10	5				
45	10.2060.45	6	6	4	10.2062.45	10	10	5				
50	10.2060.50	6	6	4								

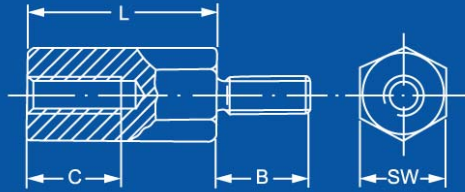
Dimensional changes or custom parts made to order. Call us for a quote

M2

Male - Female



Dimensions in mm



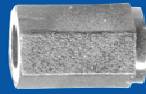
L Length	Brass Nickel Plated											
	Part #	C	B	SW								
5	10.2040.05	2,5	6	4								
8	10.2040.08	5	6	4								
10	10.2040.10	5	6	4								
12	10.2040.12	6	6	4								
15	10.2040.15	6	6	4								
18	10.2040.18	6	6	4								
20	10.2040.20	6	6	4								
25	10.2040.25	6	6	4								
30	10.2040.30	6	6	4								
35	10.2040.35	6	6	4								
40	10.2040.40	6	6	4								

Dimensional changes or custom parts made to order. Call us for a quote

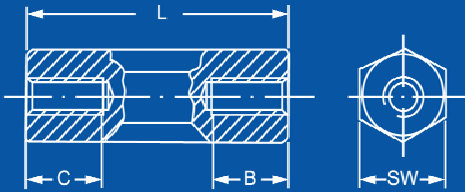
M2.5

Female - Female

Polyamide Max Temp 110°C



Dimensions in mm



L Length	Brass Nickel Plated				Polyamide							
	Part #	C	B	SW	Part #	C	B	SW				
5	10.2560.05	2.5	2.5	4	10.2562.05	2.5	2.5	5				
6	10.2560.06	3	3	4	10.2562.06	3	3	5				
7					10.2562.07	3.5	3.5	5				
8	10.2560.08	4	4	4	10.2562.08	4	4	5				
9					10.2562.09	4.5	4.5	5				
10	10.2560.10	5	5	4	10.2562.10	5	5	5				
11					10.2562.11	5.5	5.5	5				
12	10.2560.12	6	6	4	10.2562.12	6	6	5				
13					10.2562.13	6.5	6.5	5				
14					10.2562.14	7	7	5				
15	10.2560.15	7.5	7.5	4	10.2562.15	7.5	7.5	5				
16					10.2562.16	8	8	5				
17					10.2562.17	8.5	8.5	5				
18	10.2560.18	9	9	4	10.2562.18	9	9	5				
19					10.2562.19	9.5	9.5	5				
20	10.2560.20	10	10	4	10.2562.20	10	10	5				
21					10.2562.21	10	10	5				
22					10.2562.22	10	10	5				
23					10.2562.23	10	10	5				
24					10.2562.24	10	10	5				
25	10.2560.25	10	10	4	10.2562.25	10	10	5				
26					10.2562.26	10	10	5				
27					10.2562.27	10	10	5				
28					10.2562.28	10	10	5				
29					10.2562.29	10	10	5				
30	10.2560.30	10	10	4	10.2562.30	10	10	5				
32					10.2562.32	10	10	5				
35	10.2560.35	10	10	4	10.2562.35	10	10	5				
40	10.2560.40	10	10	4	10.2562.40	10	10	5				
45	10.2560.45	10	10	4	10.2562.45	10	10	5				
50	10.2560.50	10	10	4	10.2562.50	10	10	5				
55	10.2560.55	10	10	4	10.2562.55	10	10	5				
60	10.2560.60	10	10	4	10.2562.60	10	10	5				

Dimensional changes or custom parts made to order. Call us for a quote

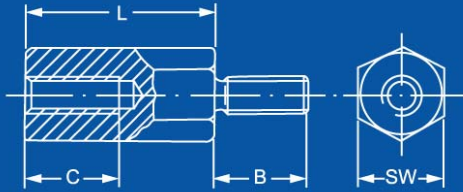
M2.5

Male - Female

Polyamide Max Temp 110°C



Dimensions in mm



L Length	Brass Nickel Plated				Polyamide							
	Part #	C	B	SW	Part #	C	B	SW				
5	10.3540.05	2.5	6	5	10.3542.05	3	8	5				
6					10.3542.06	3.5	8	5				
7					10.3542.07	3.5	8	5				
8	10.3540.08	5	6	5	10.3542.08	5	8	5				
9					10.3542.09	5	8	5				
10	10.3540.10	6	6	5	10.3542.10	7	8	5				
11					10.3542.11	7	8	5				
12	10.3540.12	6	6	5	10.3542.12	9	8	5				
13					10.3542.13	9	8	5				
14					10.3542.14	9	8	5				
15	10.3540.15	6	6	5	10.3542.15	10	8	5				
16					10.3542.16	10	8	5				
17					10.3542.17	10	8	5				
18	10.3540.18	6	6	5	10.3542.18	10	8	5				
19					10.3542.19	10	8	5				
20	10.3540.20	6	6	5	10.3542.20	10	8	5				
21					10.3542.21	10	8	5				
22					10.3542.22	10	8	5				
23					10.3542.23	10	8	5				
24					10.3542.24	10	8	5				
25	10.3540.25	6	6	5	10.3542.25	10	8	5				
26					10.3542.26	10	8	5				
27					10.3542.27	10	8	5				
28					10.3542.28	10	8	5				
29					10.3542.29	10	8	5				
30	10.3540.30	6	6	5	10.3542.30	10	8	5				
32					10.3542.32	10	8	5				
35	10.3540.35	6	6	5	10.3542.35	10	8	5				
40	10.3540.40	6	6	5	10.3542.40	10	8	5				
45					10.3542.45	10	8	5				

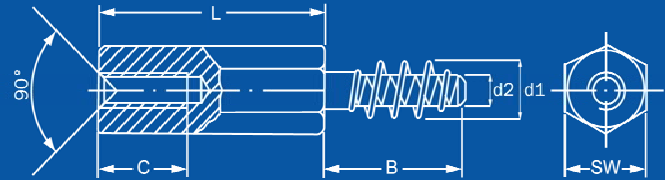
Dimensional changes or custom parts made to order. Call us for a quote

M2.5

Male - Female
Self-Tapping



Dimensions in mm



L Length	Brass Nickel Plated						Steel Zinc Plated					
	Part #	C	B	SW	d1	d2	Part #	C	B	SW	d1	d2
8	10.2543.08	5	6	5	2,2	1,6	10.2544.08	5	6	5	2,2	1,6
10	10.2543.10	6	8	5	2,2	1,6	10.2544.10	6	8	5	2,2	1,6
12	10.2543.12	7	8	5	2,2	1,6	10.2544.12	7	8	5	2,2	1,6
15	10.2543.15	10	8	5	2,2	1,6	10.2544.15	10	8	5	2,2	1,6
20	10.2543.20	10	8	5	2,2	1,6	10.2544.20	10	8	5	2,2	1,6

Dimensional changes or custom parts made to order. Call us for a quote

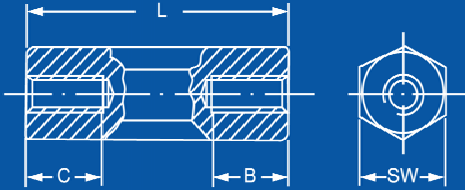
M3

Female – Female

Polyamide Max Temp 110°C



Dimensions in mm



L Length	Brass Nickel Plated			Steel Zinc Plated			Polyamide					
	Part #	C	B	SW	Part #	C	B	SW	Part #	C	B	SW
5	10.3060.05	2.5	2.5	5	10.3061.05	2.5	2.5	5.5	10.3062.05	2.5	2.5	6
6	10.3060.06	3	3	5					10.3062.06	3	3	6
7	10.3060.07	3.5	3.5	5	10.3061.07	3.5	3.5	6	10.3062.07	3.5	3.5	6
8	10.3060.08	4	4	5	10.3061.08	4	4	5.5	10.3062.08	4	4	6
9									10.3062.09	4.5	4.5	6
10	10.3060.10	5	5	5	10.3061.10	5	5	5.5	10.3062.10	5	5	6
11	10.3060.11	5.5	5.5	5	10.3061.11	5.5	5.5	6	10.3062.11	5.5	5.5	6
12	10.3060.12	6	6	5	10.3061.12	6	6	5.5	10.3062.12	6	6	6
13	10.3060.13	6.5	6.5	5	10.3061.13	6.5	6.5	6	10.3062.13	6.5	6.5	6
14	10.3060.14	7	7	5	10.3061.14	7	7	6	10.3062.14	7	7	6
15	10.3060.15	7.5	7.5	5	10.3061.15	7.5	7.5	5.5	10.3062.15	7.5	7.5	6
16	10.3060.16	8	8	5	10.3061.16	8	8	6	10.3062.16	8	8	6
17	10.3060.17	8.5	8.5	5	10.3061.17	8.5	8.5	6	10.3062.17	8.5	8.5	6
18	10.3060.18	9	9	5	10.3061.18	9	9	6	10.3062.18	9	9	6
19					10.3061.19	9.5	9.5	5.5	10.3062.19	9.5	9.5	6
20	10.3060.20	10	10	5	10.3061.20	6	6	6	10.3062.20	10	10	6
21									10.3062.21	10	10	6
22					10.3061.22	10	10	5.5	10.3062.22	10	10	6
23									10.3062.23	10	10	6
24									10.3062.24	10	10	6
25	10.3060.25	10	10	5	10.3061.25	10	10	5.5	10.3062.25	10	10	6
26									10.3062.26	10	10	6
27	10.3060.27	10	10	5	10.3061.27	6	6	6	10.3062.27	10	10	6
28					10.3061.28	6	6	6	10.3062.28	10	10	6
29									10.3062.29	10	10	6
30	10.3060.30	10	10	5	10.3061.30	10	10	5.5	10.3062.30	10	10	6
31									10.3062.31	10	10	6
32	10.3060.32	10	10		10.3061.32	10	10	5.5	10.3062.32	10	10	6
33	10.3060.33	10	10	5					10.3062.33	10	10	6
34									10.3062.34	10	10	6
35	10.3060.35	10	10	5	10.3061.35	10	10	5.5	10.3062.35	10	10	6
36					10.3061.36				10.3062.36	10	10	6
37	10.3060.37	10	10	5	10.3061.37	6	6	6	10.3062.37	10	10	6
38					10.3061.38	6	6	6	10.3062.38	10	10	6
39									10.3062.39	10	10	6
40	10.3060.40	10	10	5	10.3061.40	10	10	5.5	10.3062.40	10	10	6
42					10.3061.42	6	6	6	10.3062.42	10	10	6
44									10.3062.44	10	10	6
45	10.3060.45	10	10	5	10.3061.45	10	10	5.5	10.3062.45	10	10	6
46									10.3062.46	10	10	6
48									10.3062.48	10	10	6

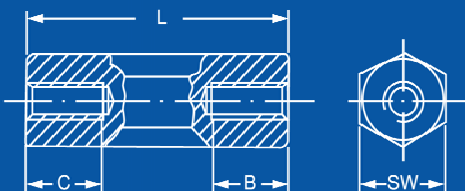
M3

Female - Female

Polyamide Max Temp 110°C



Dimensions in mm



L Length	Brass Nickel Plated				Steel Zinc Plated				Polyamide			
	Part #	C	B	SW	Part #	C	B	SW	Part #	C	B	SW
50	10.3060.50	10	10	5	10.3061.50	10	10	5.5	10.3062.50	10	10	6
55	10.3060.55	10	10	5	10.3061.55	10	10	5.5	10.3062.55	10	10	6
60	10.3060.60	10	10	5	10.3061.60	10	10	5.5	10.3062.60	10	10	6
65					10.3061.65	10	10	5.5	10.3062.65	10	10	6
70					10.3061.70	10	10	5.5				

Dimensional changes or custom parts made to order. Call us for a quote

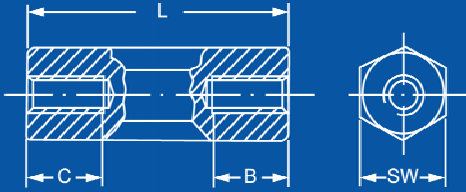
M3

Female - Female

Plastic body with metal insert
Polyamide Max Temp 110°C



Dimensions in mm



L Length	Polyamide + Brass Insert Hex				Polyamide + Brass Insert Round							
	Part #	C	B	SW	Part #	C	B	dia				
10					10.3064.10	6	6	6.5				
15	10.3063.15	6	6	6.35	10.3064.15	6	6	6.5				
20	10.3063.20	6	6	6.35	10.3064.20	6	6	6.5				
25	10.3063.25	6	6	6.35	10.3064.25	6	6	6.5				
30	10.3063.30	6	6	6.35	10.3064.30	6	6	6.5				
35	10.3063.35	6	6	6.35	10.3064.35	6	6	6.5				
40	10.3063.40	6	6	6.35	10.3064.40	6	6	6.5				
45	10.3063.45	6	6	6.35	10.3064.45	6	6	6.5				
50	10.3063.50	6	6	6.35	10.3064.50	6	6	6.5				
55					10.3064.55	6	6	6.5				
60					10.3064.60	6	6	6.5				
65					10.3064.65	6	6	6.5				
70					10.3064.70	6	6	6.5				
75					10.3064.75	6	6	6.5				
80					10.3064.80	6	6	6.5				
85					10.3064.85	6	6	6.5				
90					10.3064.90	6	6	6.5				
95					10.3064.95	6	6	6.5				
100					10.3064.100	6	6	6.5				
105					10.3064.105	6	6	6.5				

Dimensional changes or custom parts made to order. Call us for a quote

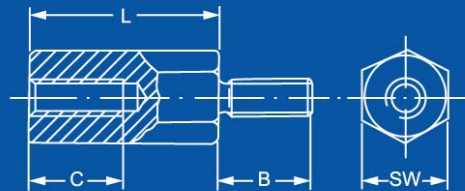
M3

Male - Female

Polyamide Max Temp 110°C



Dimensions in mm



L Length	Brass Nickel Plated				Steel Zinc Plated				Polyamide			
	Part #	C	B	SW	Part #	C	B	SW	Part #	C	B	SW
5	10.3040.05	3	6	5	10.3041.05	3	6	6	10.3042.05	3	8	6
6	10.3040.06	3	6	5					10.3042.06	3.5	8	6
8	10.3040.08	5	6	5	10.3041.08	5	6	6	10.3042.08	5	8	6
10	10.3040.10	6	8	5	10.3041.10	6	6	6	10.3042.10	7	8	6
11									10.3042.11	7	8	6
12	10.3040.12	7	8	5	10.3041.12	7	6	6	10.3042.12	9,0	8	6
13									10.3042.13	9,0	8	6
14		8	8	5					10.3042.14	9,0	8	6
15	10.3040.15	10	8	5	10.3041.15	10	6	6	10.3042.15	10	8	6
16	10.3040.16	8	8	5					10.3042.16	10	8	6
17	10.3040.17	8	8	5	10.3041.17	6	6	6	10.3042.17	10	8	6
18	10.3040.18	10	8	5	10.3041.18	10	6	6	10.3042.18	10	8	6
19									10.3042.19	10	8	6
20	10.3040.20	10	8	5	10.3041.20	10	6	6	10.3042.20	10	8	6
21									10.3042.21	10	8	6
22	10.3040.22	10	8	5					10.3042.22	10	8	6
23	10.3040.23	10	8	5					10.3042.23	10	8	6
25	10.3040.25	10	8	5	10.3041.25	10	6	6	10.3042.25	10	8	6
26									10.3042.26	10	8	6
27									10.3042.27	10	8	6
28									10.3042.28	10	8	6
29									10.3042.29	10	8	6
30	10.3040.30	10	8	5	10.3041.30	10	6	6	10.3042.30	10	8	6
32	10.3040.32	10	6	5					10.3042.32	10	8	6
34									10.3042.34	10	8	6
35	10.3040.35	10	8	5	10.3041.35	10	6	6	10.3042.35	10	8	6
36									10.3042.36	10	8	6
38									10.3042.38	10	8	6
40	10.3040.40	10	8	5	10.3041.40	10	6	6	10.3042.40	10	8	6
41	10.3040.41	10	8	5					10.3042.41	10	8	6
45	10.3040.45	10	8	5	10.3041.45	10	6	6	10.3042.45	10	8	6
50	10.3040.50	10	8	5	10.3041.50	10	6	6	10.3042.50	10	8	6
55	10.3040.55	10	8	5	10.3041.55	10	6	6				
60	10.3040.60	10	8	5	10.3041.60	10	6	6				
65					10.3041.65	10	6	6				
70					10.3041.70	10	6	6				
75					10.3041.75	10	6	6				
80					10.3041.80	10	6	6				
85					10.3041.85	10	6	6				
90					10.3041.90	10	6	6				
95					10.3041.95	10	6	6				

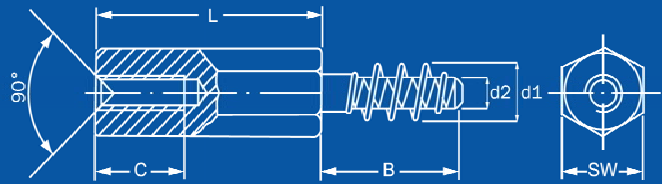
Dimensional changes or custom parts made to order. Call us for a quote

M3

Male - Female
Self-Tapping



Dimensions in mm



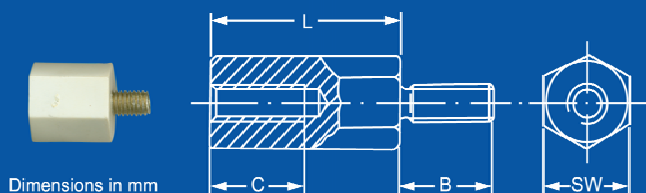
L Length	Brass Nickel Plated						Steel Zinc Plated					
	Part #	C	B	SW	d1	d2	Part #	C	B	SW	d1	d2
8	10.3052.08	5	6	5.5	2,8	2,1	10.3053.08	5	6	5,5	2,8	2,1
10	10.3052.10	6	6	5.5	2,8	2,1	10.3053.10	6	6	5,5	2,8	2,1
12	10.3052.12	7	6	5.5	2,8	2,1	10.3053.12	7	6	5,5	2,8	2,1
15	10.3052.15	10	6	5.5	2,8	2,1	10.3053.15	10	6	5,5	2,8	2,1
20	10.3052.20	10	6	5.5	2,8	2,1	10.3053.20	10	6	5,5	2,8	2,1
L Length	Brass Nickel Plated						Steel Zinc Plated					
	Part #	C	B	SW	d1	d2	Part #	C	B	SW	d1	d2
8	10.3054.08	5	6	5.5	3,2	2,3	10.3055.08	5	6	5,5	3,2	2,3
10	10.3054.10	6	6	5.5	3,2	2,3	10.3055.10	6	6	5,5	3,2	2,3
12	10.3054.12	7	6	5.5	3,2	2,3	10.3055.12	7	6	5,5	3,2	2,3
15	10.3054.15	10	6	5.5	3,2	2,3	10.3055.15	10	6	5,5	3,2	2,3
20	10.3054.20	10	6	5.5	3,2	2,3	10.3055.20	10	6	5,5	3,2	2,3
L Length	Brass Nickel Plated						Steel Zinc Plated					
	Part #	C	B	SW	d1	d2	Part #	C	B	SW	d1	d2
8	10.3056.08	5	6	6	3,4	2,6	10.3057.08	5	6	6	3,4	2,6
10	10.3056.10	6	6	6	3,4	2,6	10.3057.10	6	6	6	3,4	2,6
12	10.3056.12	7	6	6	3,4	2,6	10.3057.12	7	6	6	3,4	2,6
15	10.3056.15	10	6	6	3,4	2,6	10.3057.15	10	6	6	3,4	2,6
20	10.3056.20	10	6	6	3,4	2,6	10.3057.20	10	6	6	3,4	2,6

Dimensional changes or custom parts made to order. Call us for a quote

M3

Male - Female

Plastic body with metal insert & brass stud
 Polyamide Max Temp 110°C
 Polystyrene Max Temp 70°C
 Polystyrene Rating UL 94-V2



L Length	Polyamide + Brass Insert Hex				Polyamide + Brass Insert Round				Polystyrene + Steel, Brass Insert Hex			
	Part #	C	B	SW	Part #	C	B	dia	Part #	C	B	SW
10					10.3047.10	6	6	6.5		6	6	6
15	10.3046.15	6	6	6.35	10.3047.15	6	6	6.5	10.3048.15	6	6	6
20	10.3046.20	6	6	6.35	10.3047.20	6	6	6.5	10.3048.20	6	6	6
25	10.3046.25	6	6	6.35	10.3047.25	6	6	6.5	10.3048.25	6	6	6
30	10.3046.30	6	6	6.35	10.3047.30	6	6	6.5	10.3048.30	6	6	6
35	10.3046.35	6	6	6.35	10.3047.35	6	6	6.5	10.3048.35	6	6	6
40	10.3046.40	6	6	6.35	10.3047.40	6	6	6.5	10.3048.40	6	6	6
45	10.3046.45	6	6	6.35	10.3047.45	6	6	6.5	10.3048.45	6	6	6
50	10.3046.50	6	6	6.35	10.3047.50	6	6	6.5	10.3048.50	6	6	6
55					10.3047.55	6	6	6.5	10.3048.55	6	6	6
60					10.3047.60	6	6	6.5				
65					10.3047.65	6	6	6.5				
70					10.3047.70	6	6	6.5				
75					10.3047.75	6	6	6.5				
80					10.3047.80	6	6	6.5				
85					10.3047.85	6	6	6.5				
90					10.3047.90	6	6	6.5				
95					10.3047.95	6	6	6.5				
100					10.3047.100	6	6	6.5				
105					10.3047.105	6	6	6.5				

Dimensional changes or custom parts made to order. Call us for a quote

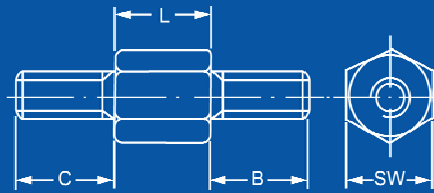
M3

Male - Male

Plastic body with brass studs
 Polyamide Max Temp 110°C
 Polystyrene Max Temp 70°C
 Polystyrene Rating UL 94-V2



Dimensions in mm



L Length	Polyamide + Brass Studs Hex				Polyamide + Brass Studs Round				Polystyrene + Brass Studs Hex			
	Part #	C	B	SW	Part #	C	B	dia	Part #	C	B	SW
10					10.3050.10	6	6	6.5				
15	10.3049.15	6	6	6.35	10.3050.15	6	6	6.5	10.3051.15	6	6	6
20	10.3049.20	6	6	6.35	10.3050.20	6	6	6.5	10.3051.20	6	6	6
25	10.3049.25	6	6	6.35	10.3050.25	6	6	6.5	10.3051.25	6	6	6
30	10.3049.30	6	6	6.35	10.3050.30	6	6	6.5	10.3051.30	6	6	6
35	10.3049.35	6	6	6.35	10.3050.35	6	6	6.5	10.3051.35	6	6	6
40	10.3049.40	6	6	6.35	10.3050.40	6	6	6.5	10.3051.40	6	6	6
45	10.3049.45	6	6	6.35	10.3050.45	6	6	6.5	10.3051.45	6	6	6
50	10.3049.50	6	6	6.35	10.3050.50	6	6	6.5	10.3051.50	6	6	6
55					10.3050.55	6	6	6.5	10.3051.55	6	6	6
60					10.3050.60	6	6	6.5				
65					10.3050.65	6	6	6.5				
70					10.3050.70	6	6	6.5				
75					10.3050.75	6	6	6.5				
80					10.3050.80	6	6	6.5				
85					10.3050.85	6	6	6.5				
90					10.3050.90	6	6	6.5				
95					10.3050.95	6	6	6.5				
100					10.3050.100	6	6	6.5				
105					10.3050.105	6	6	6.5				

Dimensional changes or custom parts made to order. Call us for a quote

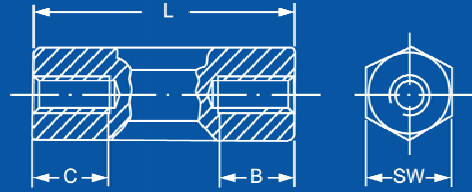
M4

Female - Female

Polyamide Max Temp 110°C



Dimensions in mm



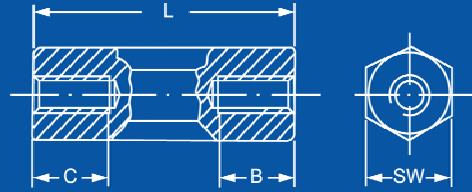
L Length	Brass Nickel Plated				Steel Zinc Plated				Polyamide			
	Part #	C	B	SW	Part #	C	B	SW	Part #	C	B	SW
5	10.4060.05	2.5	2.5	7	10.4061.05	2.5	2.5	8	10.4062.05	2.5	2.5	8
6	10.4060.06	3	3	7								
7	10.4060.07	3.5	3.5	7								
8	10.4060.08	4	4	7	10.4061.08	4	4	8	10.4062.08	4	4	8
10	10.4060.10	5	5	7	10.4061.10	5	5	8	10.4062.10	5	5	8
11									10.4062.11	5.5	5.5	8
12	10.4060.12	6	6	7	10.4061.12	6	6	8	10.4062.12	6	6	8
13	10.4060.13	6.5	6.5	7					10.4062.13	6.5	6.5	8
14	10.4060.14	7	7	7					10.4062.14	7	7	8
15	10.4060.15	7.5	7.5	7	10.4061.15	7.5	7.5	8	10.4062.15	7.5	7.5	8
16	10.4060.16	8	8	7					10.4062.16	8	8	8
17	10.4060.17	8.5	8.5	7					10.4062.17	8.5	8.5	8
18	10.4060.18	9	9	7	10.4061.18	9	9	8	10.4062.18	9	9	8
19	10.4060.19	9.5	9.5	7					10.4062.19	9.5	9.5	8
20	10.4060.20	10	10	7	10.4061.20	10	10	8	10.4062.20	10	10	8
21	10.4060.21	10	10	7					10.4062.21	10	10	8
22									10.4062.22	10	10	8
23									10.4062.23	10	10	8
24									10.4062.24	10	10	8
25	10.4060.25	10	10	7	10.4061.25	10	10	8	10.4062.25	10	10	8
26									10.4062.26	10	10	8
27									10.4062.27	10	10	8
28									10.4062.28	10	10	8
29									10.4062.29	10	10	8
30	10.4060.30	10	10	7	10.4061.30	10	10	8	10.4062.30	10	10	8
32									10.4062.32	10	10	8
34									10.4062.34	10	10	8
35	10.4060.35	10	10	7	10.4061.35	10	10	8	10.4062.35	10	10	8
36									10.4062.36	10	10	8
38									10.4062.38	10	10	8
40	10.4060.40	10	10	7	10.4061.40	10	10	8	10.4062.40	10	10	8
42									10.4062.42	10	10	8
44									10.4062.44	10	10	8
45	10.4060.45	10	10	7	10.4061.45	10	10	8	10.4062.45	10	10	8
46									10.4062.46	10	10	8
48									10.4062.48	10	10	8
50	10.4060.50	10	10	7	10.4061.50	10	10	8	10.4062.50	10	10	8
55	10.4060.55	10	10	7	10.4061.55	10	10	8	10.4062.55	10	10	8
60	10.4060.60	10	10	7	10.4061.60	10	10	8	10.4062.60	10	10	8
65	10.4060.65	10	10	7	10.4061.65	10	10	8	10.4062.65	10	10	8
68									10.4062.68	10	10	8

M4

Female - Female



Dimensions in mm



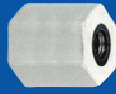
L Length	Brass Nickel Plated				Steel Zinc Plated							
	Part #	C	B	SW	Part #	C	B	SW				
70	10.4060.70	10	10	7	10.4061.70	10	10	8				
75	10.4060.75	10	10	7	10.4061.75	10	10	8				
80	10.4060.80	10	10	7	10.4061.80	10	10	8				
85	10.4060.85	10	10	7	10.4061.85	10	10	8				
90	10.4060.90	10	10	7	10.4061.90	10	10	8				
95	10.4060.95	10	10	7	10.4061.95	10	10	8				
100	10.4060.100	10	10	7	10.4061.100	10	10	8				

Dimensional changes or custom parts made to order. Call us for a quote

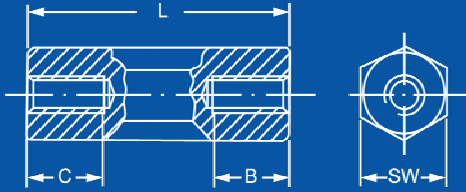
M4

Female - Female

Plastic body with metal insert
Polyamide Max Temp 110°C



Dimensions in mm



L Length	Polyamide + Brass Insert Hex				Polyamide + Brass Insert Round							
	Part #	C	B	SW	Part #	C	B	dia				
10					10.4064.10	10	10	8				
15	10.4063.15	10	10	8	10.4064.15	10	10	8				
20	10.4063.20	10	10	8	10.4064.20	10	10	8				
25	10.4063.25	10	10	8	10.4064.25	10	10	8				
30	10.4063.30	10	10	8	10.4064.30	10	10	8				
35	10.4063.35	10	10	8	10.4064.35	10	10	8				
40	10.4063.40	10	10	8	10.4064.40	10	10	8				
45	10.4063.45	10	10	8	10.4064.45	10	10	8				
50	10.4063.50	10	10	8	10.4064.50	10	10	8				
55					10.4064.55	10	10	8				
60					10.4064.60	10	10	8				
65					10.4064.65	10	10	8				
70					10.4064.70	10	10	8				
75					10.4064.75	10	10	8				
80					10.4064.80	10	10	8				
85					10.4064.85	10	10	8				
90					10.4064.90	10	10	8				
95					10.4064.95	10	10	8				
100					10.4064.100	10	10	8				
105					10.4064.105	10	10	8				

Dimensional changes or custom parts made to order. Call us for a quote

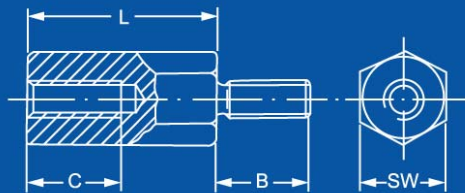
M4

Male - Female

Polyamide Max Temp 110°C



Dimensions in mm



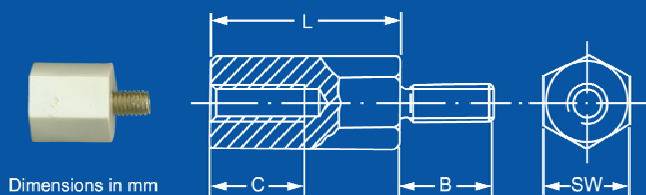
L Length	Brass Nickel Plated				Steel Zinc Plated				Polyamide			
	Part #	C	B	SW	Part #	C	B	SW	Part #	C	B	SW
5	10.4040.05	3	8	7	10.4041.05	3	8	7	10.4042.05	3	8	8
6	10.4040.06	3	8	7					10.4042.06	3.5	8	8
8	10.4040.08	5	8	7	10.4041.08	5	8	7	10.4042.08	5	8	8
10	10.4040.10	6	8	7	10.4041.10	6	8	7	10.4042.10	7,0	8	8
11									10.4042.11	7,0	8	8
12	10.4040.12	7	8	7	10.4041.12	7	8	7	10.4042.12	9,0	8,0	8
13	10.4040.13	8	8	7					10.4042.13	9,0	8,0	8
14	10.4040.14	10	8	7					10.4042.14	9,0	8,0	8
15	10.4040.15	10	8	7	10.4041.15	10	8	7	10.4042.15	10	8	8
16	10.4040.16	8	8	7					10.4042.16	10	8	8
17	10.4040.17	8	8	7					10.4042.17	10	8	8
18	10.4040.18	10	8	7	10.4041.18	10	8	7	10.4042.18	10	8	8
19									10.4042.19	10	8	8
20	10.4040.20	10	8	7	10.4041.20	10	8	7	10.4042.20	10	8	8
21									10.4042.21	10	8	8
22									10.4042.22	10	8	8
23									10.4042.23	10	8	8
24									10.4042.24	10	8	8
25	10.4040.25	10	8	7	10.4041.25	10	8	7	10.4042.25	10	8	8
26									10.4042.26	10	8	8
27					10.4041.27	8	8	8	10.4042.27	10	8	8
28									10.4042.28	10	8	8
29									10.4042.29	10	8	8
30	10.4040.30	10	8	7	10.4041.30	10	8	7	10.4042.30	10	8	8
32									10.4042.32	10	8	8
34									10.4042.34	10	8	8
35	10.4040.35	10	8	7	10.4041.35	10	8	7	10.4042.35	10	8	8
36									10.4042.36	10	8	8
38									10.4042.38	10	8	8
40	10.4040.40	10	8	7	10.4041.40	10	8	7	10.4042.40	10	8	8
45	10.4040.45	10	8	7	10.4041.45	10	8	7	10.4042.45	10	8	8
50	10.4040.50	10	8	7	10.4041.50	10	8	7	10.4042.50	10	8	8
55	10.4040.55	10	8	7	10.4041.55	10	8	7	10.4042.55	10	8	8
60	10.4040.60	10	8	7	10.4041.60	10	8	7	10.4042.60	10	8	8
65	10.4040.65	10	8	7	10.4041.65	10	8	7	10.4042.65	10	8	8
70	10.4040.70	10	8	7	10.4041.70	10	8	7				
75	10.4040.75	10	8	7	10.4041.75	10	8	7				
80	10.4040.80	10	8	7	10.4041.80	10	8	7				
85	10.4040.85	10	8	7	10.4041.85	10	8	7				
90	10.4040.90	10	8	7	10.4041.90	10	8	7				
95	10.4040.95	10	8	7	10.4041.95	10	8	7				

Dimensional changes or custom parts made to order. Call us for a quote

M4

Male - Female

Plastic body with metal insert & brass stud
 Polyamide Max Temp 110°C
 Polystyrene Max Temp 70°C
 Polystyrene Rating UL 94-V2



L Length	Polyamide + Brass Insert Hex				Polyamide + Brass Insert Round				Polystyrene + Steel, Brass Insert Hex			
	Part #	C	B	SW	Part #	C	B	dia	Part #	C	B	SW
10									10.4047.10	7	7	9
15	10.4045.15	6	6	8	10.4046.15	6	6	8,0	10.4047.15	7	7	9
20	10.4045.20	6	6	8	10.4046.20	6	6	8,0	10.4047.20	7	7	9
25	10.4045.25	6	6	8	10.4046.25	6	6	8,0	10.4047.25	7	7	9
30	10.4045.30	6	6	8	10.4046.30	6	6	8,0	10.4047.30	7	7	9
35	10.4045.35	6	6	8	10.4046.35	6	6	8,0	10.4047.35	7	7	9
40	10.4045.40	6	6	8	10.4046.40	6	6	8,0	10.4047.40	7	7	9
45	10.4045.45	6	6	8	10.4046.45	6	6	8,0	10.4047.45	7	7	9
50	10.4045.50	6	6	8	10.4046.50	6	6	8,0	10.4047.50	7	7	9
55					10.4046.55	6	6	8,0	10.4047.55	7	7	9
60					10.4046.60	6	6	8,0	10.4047.60	7	7	9
65					10.4046.65	6	6	8,0	10.4047.65	7	7	9
70					10.4046.70	6	6	8,0	10.4047.70	7	7	9
75					10.4046.75	6	6	8,0	10.4047.75	7	7	9
80					10.4046.80	6	6	8,0	10.4047.80	7	7	9
85					10.4046.85	6	6	8,0	10.4047.85	7	7	9
90					10.4046.90	6	6	8,0	10.4047.90	7	7	9
95					10.4046.95	6	6	8,0				
100					10.4046.100	6	6	8,0				
105					10.4046.105	6	6	8,0				

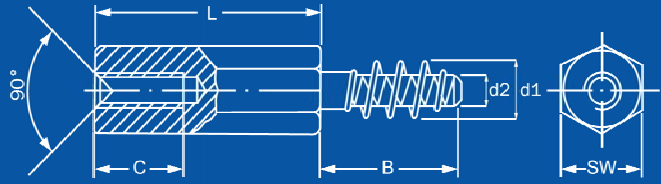
Dimensional changes or custom parts made to order. Call us for a quote

M4

Male - Female
Self-Tapping



Dimensions in mm



L Length	Brass Nickel Plated						Steel Zinc Plated					
	Part #	C	B	SW	d1	d2	Part #	C	B	SW	d1	d2
8	10.4043.08	5	8	7	4,1	3,0	10.4044.08	5	8	7	4,1	3,0
10	10.4043.10	6	8	7	4,1	3,0	10.4044.10	6	8	7	4,1	3,0
12	10.4043.12	8	8	7	4,1	3,0	10.4044.12	8	8	7	4,1	3,0
15	10.4043.15	10	8	7	4,1	3,0	10.4044.15	10	8	7	4,1	3,0
20	10.4043.20	10	8	7	4,1	3,0	10.4044.20	10	8	7	4,1	3,0

Dimensional changes or custom parts made to order. Call us for a quote

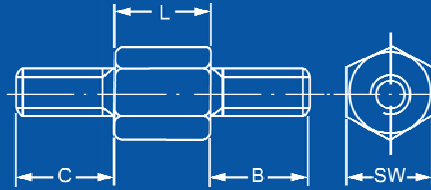
M4

Male - Male

Plastic body with brass studs
 Polyamide Max Temp 110°C
 Polystyrene Max Temp 70°C
 Polystyrene Rating UL 94-V2



Dimensions in mm



L Length	Polyamide + Brass Studs Hex				Polyamide + Brass Studs Round				Polystyrene + Brass Studs Hex			
	Part #	C	B	SW	Part #	C	B	dia	Part #	C	B	SW
15	10.4048.15	6	6	8	10.4049.15	6	6	8	10.4050.15	6	6	9
20	10.4048.20	6	6	8	10.4049.20	6	6	8	10.4050.20	6	6	9
25	10.4048.25	6	6	8	10.4049.25	6	6	8	10.4050.25	6	6	9
30	10.4048.30	6	6	8	10.4049.30	6	6	8	10.4050.30	6	6	9
35	10.4048.35	6	6	8	10.4049.35	6	6	8	10.4050.35	6	6	9
40	10.4048.40	6	6	8	10.4049.40	6	6	8	10.4050.40	6	6	9
45	10.4048.45	6	6	8	10.4049.45	6	6	8	10.4050.45	6	6	9
50	10.4048.50	6	6	8	10.4049.50	6	6	8	10.4050.50	6	6	9
55					10.4049.55	6	6	8	10.4050.55	6	6	9
60					10.4049.60	6	6	8	10.4050.60	6	6	9
65					10.4049.65	6	6	8	10.4050.65	6	6	9
70					10.4049.70	6	6	8	10.4050.70	6	6	9
75					10.4049.75	6	6	8	10.4050.75	6	6	9
80					10.4049.80	6	6	8	10.4050.80	6	6	9
85					10.4049.85	6	6	8	10.4050.85	6	6	9
90					10.4049.90	6	6	8	10.4050.90	6	6	9
95					10.4049.95	6	6	8				
100					10.4049.100	6	6	8				
105					10.4049.105	6	6	8				

Dimensional changes or custom parts made to order. Call us for a quote

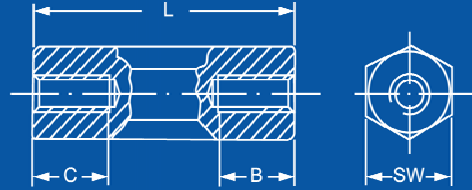
M5

Female - Female

Polyamide Max Temp 110°C



Dimensions in mm



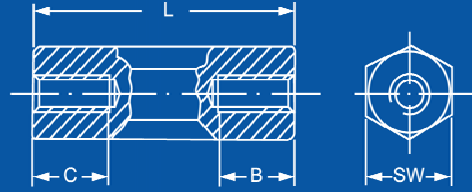
L Length	Brass Nickel Plated				Steel Zinc Plated				Polyamide			
	Part #	C	B	SW	Part #	C	B	SW	Part #	C	B	SW
8	10.5060.08	4	4	8	10.5061.08	4	4	8				10
10	10.5060.10	5	5	8	10.5061.10	5	5	8	10.5062.10	5	5	10
11									10.5062.11	5.5	5.5	10
12	10.5060.12	6	6	8	10.5061.12	6	6	8	10.5062.12	6	6	10
13					10.5061.13	6.5	6.5	8	10.5062.13	6.5	6.5	10
14									10.5062.14	7	7	10
15	10.5060.15	7.5	7.5	8	10.5061.15	7.5	7.5	8	10.5062.15	7.5	7.5	10
16					10.5061.16	8	8	8	10.5062.16	8	8	10
17					10.5061.17	8.5	8.5	8	10.5062.17	8.5	8.5	10
18	10.5060.18	9	9	8	10.5061.18	9	9	8	10.5062.18	9	9	10
19									10.5062.19	9.5	9.5	10
20	10.5060.20	10	10	8	10.5061.20	10	10	8	10.5062.20	10	10	10
21									10.5062.21	10	10	10
22					10.5061.22	10	10	8	10.5062.22	10	10	10
23									10.5062.23	10	10	10
24									10.5062.24	10	10	10
25	10.5060.25	10	10	8	10.5061.25	10	10	8	10.5062.25	10	10	10
26									10.5062.26	10	10	10
27									10.5062.27	10	10	10
28					10.5061.28	10	10	8	10.5062.28	10	10	10
29									10.5062.29	10	10	10
30	10.5060.30	10	10	8	10.5061.30	10	10	8	10.5062.30	10	10	10
32									10.5062.32	10	10	10
34									10.5062.34	10	10	10
35	10.5060.35	10	10	8	10.5061.35	10	10	8	10.5062.35	10	10	10
36									10.5062.36	10	10	10
38									10.5062.38	10	10	10
40	10.5060.40	10	10	8	10.5061.40	10	10	8	10.5062.40	10	10	10
42									10.5062.42	10	10	10
44									10.5062.44	10	10	10
45	10.5060.45	10	10	8	10.5061.45	10	10	8	10.5062.45	10	10	10
46									10.5062.46	10	10	10
48									10.5062.48	10	10	10
50	10.5060.50	10	10	8	10.5061.50	10	10	8	10.5062.50	10	10	10
55	10.5060.55	10	10	8	10.5061.55	10	10	8	10.5062.55	10	10	10
60	10.5060.60	10	10	8	10.5061.60	10	10	8	10.5062.60	10	10	10
65	10.5060.65	10	10	8	10.5061.65	10	10	8				
70	10.5060.70	10	10	8	10.5061.70	10	10	8				
75	10.5060.75	10	10	8	10.5061.75	10	10	8				
80	10.5060.80	10	10	8	10.5061.80	10	10	8				
85	10.5060.85	10	10	8	10.5061.85	10	10	8				

M5

Female - Female



Dimensions in mm



L Length	Brass Nickel Plated				Steel Zinc Plated				Polyamide			
	Part #	C	B	SW	Part #	C	B	SW	Part #	C	B	SW
90	10.5060.90	10	10	8	10.5061.90	10	10	8				
95	10.5060.95	10	10	8	10.5061.95	10	10	8				
100	10.5060.100	10	10	8	10.5061.100	10	10	8				

Dimensional changes or custom parts made to order. Call us for a quote

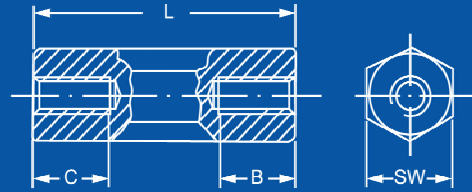
M5

Female - Female

Plastic body with metal insert
Polyamide Max Temp 110°C



Dimensions in mm



L Length	Polyamide + Brass Insert Round											
	Part #	C	B	dia								
20	10.5063.20	10	10	9.5								
25	10.5063.25	10	10	9.5								
30	10.5063.30	10	10	9.5								
35	10.5063.35	10	10	9.5								
40	10.5063.40	10	10	9.5								
45	10.5063.45	10	10	9.5								
50	10.5063.50	10	10	9.5								
55	10.5063.55	10	10	9.5								
60	10.5063.60	10	10	9.5								
65	10.5063.65	10	10	9.5								
70	10.5063.70	10	10	9.5								
75	10.5063.75	10	10	9.5								
80	10.5063.80	10	10	9.5								
85	10.5063.85	10	10	9.5								
90	10.5063.90	10	10	9.5								
95	10.5063.95	10	10	9.5								
100	10.5063.100	10	10	9.5								
105	10.5063.105	10	10	9.5								

Dimensional changes or custom parts made to order. Call us for a quote

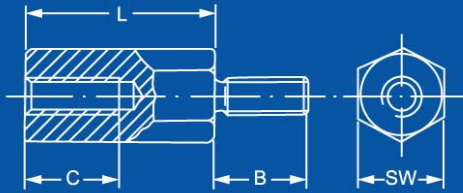
M5

Male - Female

Polyamide Max Temp 110°C



Dimensions in mm



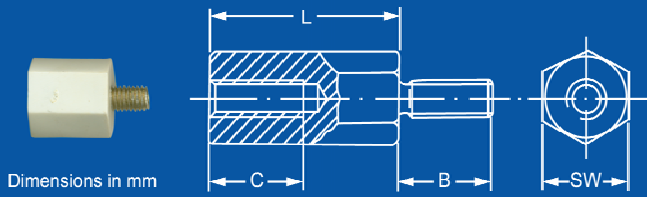
L Length	Brass Nickel Plated				Steel Zinc Plated				Polyamide			
	Part #	C	B	SW	Part #	C	B	SW	Part #	C	B	SW
8	10.5040.08	5	8	8	10.5041.08	5	8	8	10.5042.08	5	8	10
10	10.5040.10	6	8	8	10.5041.10	6	8	8	10.5042.10	7,0	8	10
11									10.5042.11	7,0	8	10
12	10.5040.12	7	8	8	10.5041.12	7	8	8	10.5042.12	9,0	8,0	10
13									10.5042.13	9,0	8,0	10
14									10.5042.14	9,0	8,0	10
15	10.5040.15	10	8	8	10.5041.15	10	8	8	10.5042.15	10	8	10
16	10.5040.16	10	8	8					10.5042.16	10	8	10
17									10.5042.17	10	8	10
18	10.5040.18	10	8	8	10.5041.18	10	8	8	10.5042.18	10	8	10
19									10.5042.19	10	8	10
20	10.5040.20	10	8	8	10.5041.20	10	8	8	10.5042.20	10	8	10
21									10.5042.21	10	8	10
22									10.5042.22	10	8	10
23									10.5042.23	10	8	10
24									10.5042.24	10	8	10
25	10.5040.25	10	8	8	10.5041.25	10	8	8	10.5042.25	10	8	10
26									10.5042.26	10	8	10
27					10.5041.27	8	8	8	10.5042.27	10	8	10
28									10.5042.28	10	8	10
29									10.5042.29	10	8	10
30	10.5040.30	10	8	8	10.5041.30	10	8	8	10.5042.30	10	8	10
32									10.5042.32	10	8	10
34									10.5042.34	10	8	10
35	10.5040.35	10	8	8	10.5041.35	10	8	8	10.5042.35	10	8	10
36									10.5042.36	10	8	10
38									10.5042.38	10	8	10
40	10.5040.40	10	8	8	10.5041.40	10	8	8	10.5042.40	10	8	10
45	10.5040.45	10	8	8	10.5041.45	10	8	8	10.5042.45	10	8	10
50	10.5040.50	10	8	8	10.5041.50	10	8	8	10.5042.50	10	8	10
55	10.5040.55	10	8	8	10.5041.55	10	8	8	10.5042.55	10	8	10
60	10.5040.60	10	8	8	10.5041.60	10	8	8	10.5042.60	10	8	10
65	10.5040.65	10	8	8	10.5041.65	10	8	8	10.5042.65	10	8	10
70	10.5040.70	10	8	8	10.5041.70	10	8	8				
75	10.5040.75	10	8	8	10.5041.75	10	8	8				
80	10.5040.80	10	8	8	10.5041.80	10	8	8				
85	10.5040.85	10	8	8	10.5041.85	10	8	8				
90	10.5040.90	10	8	8	10.5041.90	10	8	8				
95	10.5040.95	10	8	8	10.5041.95	10	8	8				
100	10.5040.100	10	8	8	10.5041.100	10	8	8				

Dimensional changes or custom parts made to order. Call us for a quote

M5

Male - Female

Plastic body with
metal insert & brass stud
Polystyrene Max Temp 70°C
Polystyrene Rating UL 94-V2



Dimensions in mm

L Length	Polystyrene + Steel, Brass Insert Hex											
	Part #	C	B	SW								
15	10.5044.15	7	7	13								
20	10.5044.20	7	7	13								
25	10.5044.25	7	7	13								
30	10.5044.30	7	7	13								
35	10.5044.35	7	7	13								
40	10.5044.40	7	7	13								
45	10.5044.45	7	7	13								
50	10.5044.50	7	7	13								
55	10.5044.55	7	7	13								
60	10.5044.60	7	7	13								
65	10.5044.65	7	7	13								
70	10.5044.70	7	7	13								
75	10.5044.75	7	7	13								
80	10.5044.80	7	7	13								
85	10.5044.85	7	7	13								
90	10.5044.90	7	7	13								
95	10.5044.95	7	7	13								
100	10.5044.100	7	7	13								
105	10.5044.105	7	7	13								
110	10.5044.110	7	7	13								
115	10.5044.115	7	7	13								
120	10.5044.120	7	7	13								

Dimensional changes or custom parts made to order. Call us for a quote

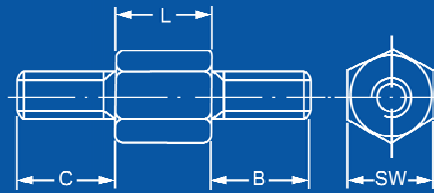
M5

Male - Male

Plastic body with brass studs
 Polyamide Max Temp 110°C
 Polystyrene Max Temp 70°C
 Polystyrene Rating UL 94-V2



Dimensions in mm



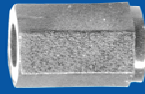
L Length	Polyamide + Brass Studs Round				Polystyrene + Brass Studs Hex							
	Part #	C	B	dia	Part #	C	B	SW				
15					10.5047.15	7	7	13				
20	10.5046.20	10	10	9,5	10.5047.20	7	7	13				
25	10.5046.25	10	10	9,5	10.5047.25	7	7	13				
30	10.5046.30	10	10	9,5	10.5047.30	7	7	13				
35	10.5046.35	10	10	9,5	10.5047.35	7	7	13				
40	10.5046.40	10	10	9,5	10.5047.40	7	7	13				
45	10.5046.45	10	10	9,5	10.5047.45	7	7	13				
50	10.5046.50	10	10	9,5	10.5047.50	7	7	13				
55	10.5046.55	10	10	9,5	10.5047.55	7	7	13				
60	10.5046.60	10	10	9,5	10.5047.60	7	7	13				
65	10.5046.65	10	10	9,5	10.5047.65	7	7	13				
70	10.5046.70	10	10	9,5	10.5047.70	7	7	13				
75	10.5046.75	10	10	9,5	10.5047.75	7	7	13				
80	10.5046.80	10	10	9,5	10.5047.80	7	7	13				
85	10.5046.85	10	10	9,5	10.5047.85	7	7	13				
90	10.5046.90	10	10	9,5	10.5047.90	7	7	13				
95	10.5046.95	10	10	9,5	10.5047.95	7	7	13				
100	10.5046.100	10	10	9,5	10.5047.100	7	7	13				
105	10.5046.105	10	10	9,5	10.5047.105	7	7	13				
110					10.5047.110	7	7	13				
115					10.5047.115	7	7	13				
120					10.5047.120	7	7	13				

Dimensional changes or custom parts made to order. Call us for a quote

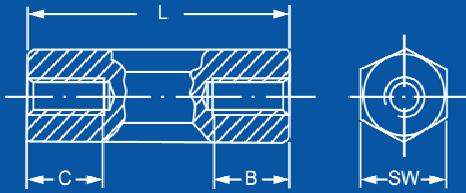
M6

Female - Female

Polyamide Max Temp 110°C



Dimensions in mm



L Length	Brass Nickel Plated				Steel Zinc Plated				Polyamide			
	Part #	C	B	SW	Part #	C	B	SW	Part #	C	B	SW
10	10.6060.10	5	5	10	10.6061.10	5	5	10	10.6062.10	5	5	10
12	10.6060.12	6	6	10	10.6061.12	6	6	10	10.6062.12	6	6	10
13									10.6062.13	6.5	6.5	10
15	10.6060.15	7.5	7.5	10	10.6061.15	7.5	7.5	10	10.6062.15	7.5	7.5	10
16									10.6062.16	8	8	10
17									10.6062.17	8.5	8.5	10
18	10.6060.18	9	9	10	10.6061.18	9	9	10	10.6062.18	9	9	10
20	10.6060.20	10	10	10	10.6061.20	10	10	10	10.6062.20	10	10	10
22									10.6062.22	10	10	10
25	10.6060.25	10	10	10	10.6061.25	10	10	10	10.6062.25	10	10	10
28									10.6062.28	10	10	10
30	10.6060.30	10	10	10	10.6061.30	10	10	10	10.6062.30	10	10	10
35	10.6060.35	10	10	10	10.6061.35	10	10	10	10.6062.35	10	10	10
40	10.6060.40	10	10	10	10.6061.40	10	10	10	10.6062.40	10	10	10
45	10.6060.45	10	10	10	10.6061.45	10	10	10	10.6062.45	10	10	10
50	10.6060.50	10	10	10	10.6061.50	10	10	10	10.6062.50	10	10	10
55	10.6060.55	10	10	10	10.6061.55	10	10	10	10.6062.55	10	10	10
60	10.6060.60	10	10	10	10.6061.60	10	10	10	10.6062.60	10	10	10
65	10.6060.65	10	10	10	10.6061.65	10	10	10				
70	10.6060.70	10	10	10	10.6061.70	10	10	10				
75	10.6060.75	10	10	10	10.6061.75	10	10	10				
80	10.6060.80	10	10	10	10.6061.80	10	10	10				
85	10.6060.85	10	10	10	10.6061.85	10	10	10				
90	10.6060.90	10	10	10	10.6061.90	10	10	10				
95	10.6060.95	10	10	10	10.6061.95	10	10	10				
100	10.6060.100	10	10	10	10.6061.100	10	10	10				

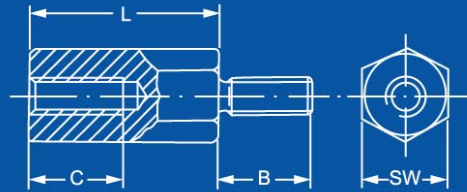
Dimensional changes or custom parts made to order. Call us for a quote

M6

Male - Female



Dimensions in mm



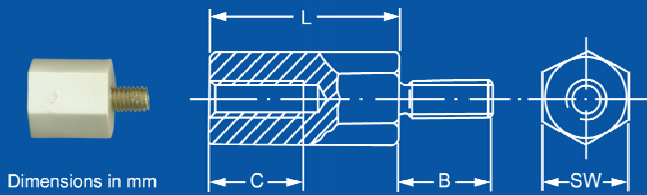
L Length	Brass Nickel Plated				Steel Zinc Plated							
	Part #	C	B	SW	Part #	C	B	SW				
10	10.6040.10	6	8	10	10.6041.10	6	8	10				
12	10.6040.12	7	8	10	10.6041.12	7	8	10				
15	10.6040.15	10	8	10	10.6041.15	10	8	10				
18	10.6040.18	10	8	10	10.6041.18	10	8	10				
20	10.6040.20	10	8	10	10.6041.20	10	8	10				
25	10.6040.25	10	8	10	10.6041.25	10	10	9				
30	10.6040.30	10	8	10	10.6041.30	10	10	9				
35	10.6040.35	10	8	10	10.6041.35	10	8	10				
40	10.6040.40	10	8	10	10.6041.40	10	10	9				
45	10.6040.45	10	8	10	10.6041.45	10	8	10				
48					10.6041.48	10	10	9				
50	10.6040.50	10	8	10	10.6041.50	10	8	10				
55	10.6040.55	10	8	10	10.6041.55	10	10	9				
60	10.6040.60	10	8	10	10.6041.60	10	8	10				
65	10.6040.65	10	8	10	10.6041.65	10	10	9				
70	10.6040.70	10	8	10	10.6041.70	10	10	9				
75	10.6040.75	10	8	10	10.6041.75	10	8	10				
80	10.6040.80	10	8	10	10.6041.80	10	10	9				
85	10.6040.85	10	8	10	10.6041.85	10	8	10				
90	10.6040.90	10	8	10	10.6041.90	10	10	9				
95	10.6040.95	10	8	10	10.6041.95	10	8	10				
100	10.6040.100	10	8	10	10.6041.100	10	8	10				

Dimensional changes or custom parts made to order. Call us for a quote

M6

Male - Female

Plastic body with metal insert & brass stud
 Polystyrene Max Temp 70°C
 Polystyrene Rating UL 94-V2



L Length	Polystyrene + Steel, Brass Insert Hex											
	Part #	C	B	SW								
15	10.6042.15	7	7	13								
20	10.6042.20	7	7	13								
25	10.6042.25	7	7	13								
30	10.6042.30	7	7	13								
35	10.6042.35	7	7	13								
40	10.6042.40	7	7	13								
45	10.6042.45	7	7	13								
50	10.6042.50	7	7	13								
55	10.6042.55	7	7	13								
60	10.6042.60	7	7	13								
65	10.6042.65	7	7	13								
70	10.6042.70	7	7	13								
75	10.6042.75	7	7	13								
80	10.6042.80	7	7	13								
85	10.6042.85	7	7	13								
90	10.6042.90	7	7	13								
95	10.6042.95	7	7	13								
100	10.6042.100	7	7	13								
105	10.6042.105	7	7	13								
110	10.6042.110	7	7	13								
115	10.6042.115	7	7	13								
120	10.6042.120	7	7	13								

Dimensional changes or custom parts made to order. Call us for a quote

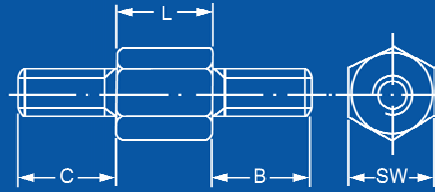
M6

Male - Male

Plastic body with brass studs
 Polystyrene Max Temp 70°C
 Polystyrene Rating UL 94-V2



Dimensions in mm

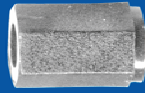


L Length	Polystyrene + Brass Studs Hex											
	Part #	C	B	SW								
15	10.6044.15	6	6	13								
20	10.6044.20	6	6	13								
25	10.6044.25	6	6	13								
30	10.6044.30	6	6	13								
35	10.6044.35	6	6	13								
40	10.6044.40	6	6	13								
45	10.6044.45	6	6	13								
50	10.6044.50	6	6	13								
55	10.6044.55	6	6	13								
60	10.6044.60	6	6	13								
65	10.6044.65	6	6	13								
70	10.6044.70	6	6	13								
75	10.6044.75	6	6	13								
80	10.6044.80	6	6	13								
85	10.6044.85	6	6	13								
90	10.6044.90	6	6	13								
95	10.6044.95	6	6	13								
100	10.6044.100	6	6	13								
105	10.6044.105	6	6	13								
110	10.6044.110	6	6	13								
115	10.6044.115	6	6	13								
120	10.6044.120	6	6	13								

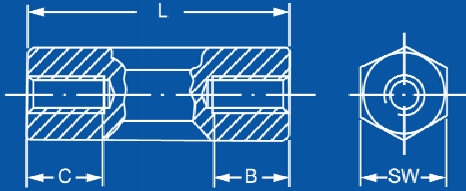
Dimensional changes or custom parts made to order. Call us for a quote

M8

Female - Female



Dimensions in mm



L Length	Steel Zinc Plated											
	Part #	C	B	SW								
15	10.8061.15	7.5	7.5	13								
20	10.8061.20	10	10	13								
25	10.8061.25	10	10	13								
30	10.8061.30	10	10	13								
35	10.8061.35	10	10	13								
40	10.8061.40	10	10	13								
45	10.8061.45	10	10	13								
50	10.8061.50	10	10	13								
60	10.8061.60	10	10	13								
70	10.8061.70	10	10	13								
80	10.8061.80	10	10	13								
90	10.8061.90	10	10	13								
100	10.8061.100	10	10	13								

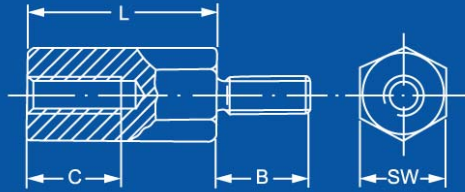
Dimensional changes or custom parts made to order. Call us for a quote

M8

Male - Female



Dimensions in mm



L Length	Steel Zinc Plated											
	Part #	C	B	SW								
15	10.8041.15	10	14	13								
20	10.8041.20	14	14	13								
25	10.8041.25	14	14	13								
30	10.8041.30	14	14	13								
35	10.8041.35	14	14	13								
40	10.8041.40	14	14	13								
45	10.8041.45	14	14	13								
50	10.8041.50	14	14	13								
60	10.8041.60	14	14	13								
70	10.8041.70	14	14	13								
80	10.8041.80	14	14	13								
90	10.8041.90	14	14	13								
100	10.8041.100	14	14	13								

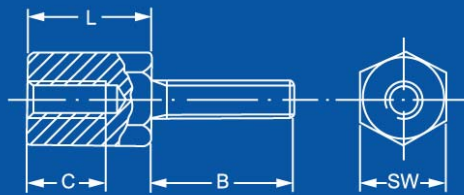
Dimensional changes or custom parts made to order. Call us for a quote

UNC

Jackscrews
4-40 to 4-40



Dimensions in mm



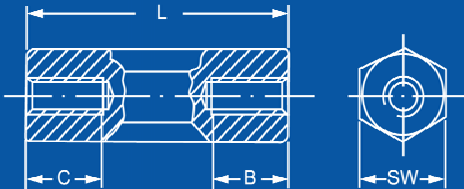
L Length	Brass Nickel Plated											
	Part #	C	B	SW								
5	10.1040.56	3	6	5								
5	10.1040.58	3	8	5								
5	10.1040.512	3	12	5								
6	10.1040.66	3	6	5								
6	10.1040.68	3	8	5								
6	10.1040.612	3	12	5								

UNC

Jackscrews
4-40 to 4-40



Dimensions in mm



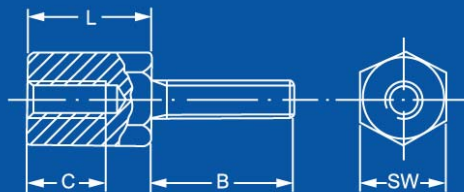
L Length	Brass Nickel Plated											
	Part #	C	B	SW								
5	10.1060.05	5	5	5								
6	10.1060.06	5	5	5								
8	10.1060.08	8	8	5								
10	10.1060.10	8	8	5								
12	10.1060.12	8	8	5								
15	10.1060.15	8	8	5								

UNC

Jackscrews
M3 to 4-40



Dimensions in mm



L Length	Brass Nickel Plated											
	Part #	C	B	SW								
5	10.1050.56	3	6	5								
5	10.1050.58	3	8	5								
5	10.1050.512	3	12	5								
6	10.1050.66	3	6	5								
6	10.1050.68	3	8	5								
6	10.1050.612	3	12	5								