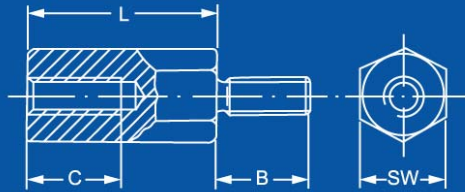


M6

Male - Female



Dimensions in mm



L Length	Brass Nickel Plated				Steel Zinc Plated							
	Part #	C	B	SW	Part #	C	B	SW				
10	10.6040.10	6	8	10	10.6041.10	6	8	10				
12	10.6040.12	7	8	10	10.6041.12	7	8	10				
15	10.6040.15	10	8	10	10.6041.15	10	8	10				
18	10.6040.18	10	8	10	10.6041.18	10	8	10				
20	10.6040.20	10	8	10	10.6041.20	10	8	10				
25	10.6040.25	10	8	10	10.6041.25	10	10	9				
30	10.6040.30	10	8	10	10.6041.30	10	10	9				
35	10.6040.35	10	8	10	10.6041.35	10	8	10				
40	10.6040.40	10	8	10	10.6041.40	10	10	9				
45	10.6040.45	10	8	10	10.6041.45	10	8	10				
48					10.6041.48	10	10	9				
50	10.6040.50	10	8	10	10.6041.50	10	8	10				
55	10.6040.55	10	8	10	10.6041.55	10	10	9				
60	10.6040.60	10	8	10	10.6041.60	10	8	10				
65	10.6040.65	10	8	10	10.6041.65	10	10	9				
70	10.6040.70	10	8	10	10.6041.70	10	10	9				
75	10.6040.75	10	8	10	10.6041.75	10	8	10				
80	10.6040.80	10	8	10	10.6041.80	10	10	9				
85	10.6040.85	10	8	10	10.6041.85	10	8	10				
90	10.6040.90	10	8	10	10.6041.90	10	10	9				
95	10.6040.95	10	8	10	10.6041.95	10	8	10				
100	10.6040.100	10	8	10	10.6041.100	10	8	10				

Dimensional changes or custom parts made to order. Call us for a quote