

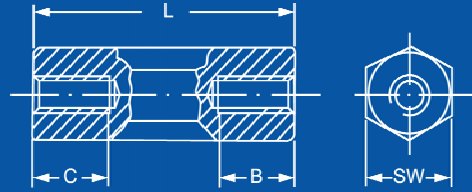
# M4

Female - Female

Polyamide Max Temp 110°C



Dimensions in mm



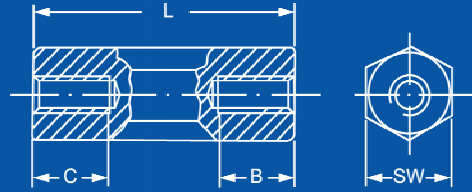
L Length	Brass Nickel Plated				Steel Zinc Plated				Polyamide			
	Part #	C	B	SW	Part #	C	B	SW	Part #	C	B	SW
5	10.4060.05	2.5	2.5	7	10.4061.05	2.5	2.5	8	10.4062.05	2.5	2.5	8
6	10.4060.06	3	3	7								
7	10.4060.07	3.5	3.5	7								
8	10.4060.08	4	4	7	10.4061.08	4	4	8	10.4062.08	4	4	8
10	10.4060.10	5	5	7	10.4061.10	5	5	8	10.4062.10	5	5	8
11									10.4062.11	5.5	5.5	8
12	10.4060.12	6	6	7	10.4061.12	6	6	8	10.4062.12	6	6	8
13	10.4060.13	6.5	6.5	7					10.4062.13	6.5	6.5	8
14	10.4060.14	7	7	7					10.4062.14	7	7	8
15	10.4060.15	7.5	7.5	7	10.4061.15	7.5	7.5	8	10.4062.15	7.5	7.5	8
16	10.4060.16	8	8	7					10.4062.16	8	8	8
17	10.4060.17	8.5	8.5	7					10.4062.17	8.5	8.5	8
18	10.4060.18	9	9	7	10.4061.18	9	9	8	10.4062.18	9	9	8
19	10.4060.19	9.5	9.5	7					10.4062.19	9.5	9.5	8
20	10.4060.20	10	10	7	10.4061.20	10	10	8	10.4062.20	10	10	8
21	10.4060.21	10	10	7					10.4062.21	10	10	8
22									10.4062.22	10	10	8
23									10.4062.23	10	10	8
24									10.4062.24	10	10	8
25	10.4060.25	10	10	7	10.4061.25	10	10	8	10.4062.25	10	10	8
26									10.4062.26	10	10	8
27									10.4062.27	10	10	8
28									10.4062.28	10	10	8
29									10.4062.29	10	10	8
30	10.4060.30	10	10	7	10.4061.30	10	10	8	10.4062.30	10	10	8
32									10.4062.32	10	10	8
34									10.4062.34	10	10	8
35	10.4060.35	10	10	7	10.4061.35	10	10	8	10.4062.35	10	10	8
36									10.4062.36	10	10	8
38									10.4062.38	10	10	8
40	10.4060.40	10	10	7	10.4061.40	10	10	8	10.4062.40	10	10	8
42									10.4062.42	10	10	8
44									10.4062.44	10	10	8
45	10.4060.45	10	10	7	10.4061.45	10	10	8	10.4062.45	10	10	8
46									10.4062.46	10	10	8
48									10.4062.48	10	10	8
50	10.4060.50	10	10	7	10.4061.50	10	10	8	10.4062.50	10	10	8
55	10.4060.55	10	10	7	10.4061.55	10	10	8	10.4062.55	10	10	8
60	10.4060.60	10	10	7	10.4061.60	10	10	8	10.4062.60	10	10	8
65	10.4060.65	10	10	7	10.4061.65	10	10	8	10.4062.65	10	10	8
68									10.4062.68	10	10	8

# M4

Female - Female



Dimensions in mm



L Length	Brass Nickel Plated			Steel Zinc Plated								
	Part #	C	B	SW	Part #	C	B	SW				
70	10.4060.70	10	10	7	10.4061.70	10	10	8				
75	10.4060.75	10	10	7	10.4061.75	10	10	8				
80	10.4060.80	10	10	7	10.4061.80	10	10	8				
85	10.4060.85	10	10	7	10.4061.85	10	10	8				
90	10.4060.90	10	10	7	10.4061.90	10	10	8				
95	10.4060.95	10	10	7	10.4061.95	10	10	8				
100	10.4060.100	10	10	7	10.4061.100	10	10	8				

Dimensional changes or custom parts made to order. Call us for a quote