

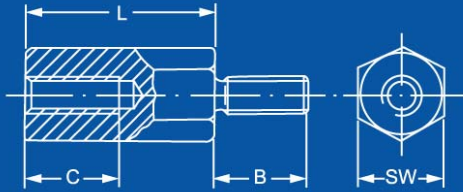
M2.5

Male - Female

Polyamide Max Temp 110°C



Dimensions in mm



L Length	Brass Nickel Plated				Polyamide							
	Part #	C	B	SW	Part #	C	B	SW				
5	10.3540.05	2.5	6	5	10.3542.05	3	8	5				
6					10.3542.06	3.5	8	5				
7					10.3542.07	3.5	8	5				
8	10.3540.08	5	6	5	10.3542.08	5	8	5				
9					10.3542.09	5	8	5				
10	10.3540.10	6	6	5	10.3542.10	7	8	5				
11					10.3542.11	7	8	5				
12	10.3540.12	6	6	5	10.3542.12	9	8	5				
13					10.3542.13	9	8	5				
14					10.3542.14	9	8	5				
15	10.3540.15	6	6	5	10.3542.15	10	8	5				
16					10.3542.16	10	8	5				
17					10.3542.17	10	8	5				
18	10.3540.18	6	6	5	10.3542.18	10	8	5				
19					10.3542.19	10	8	5				
20	10.3540.20	6	6	5	10.3542.20	10	8	5				
21					10.3542.21	10	8	5				
22					10.3542.22	10	8	5				
23					10.3542.23	10	8	5				
24					10.3542.24	10	8	5				
25	10.3540.25	6	6	5	10.3542.25	10	8	5				
26					10.3542.26	10	8	5				
27					10.3542.27	10	8	5				
28					10.3542.28	10	8	5				
29					10.3542.29	10	8	5				
30	10.3540.30	6	6	5	10.3542.30	10	8	5				
32					10.3542.32	10	8	5				
35	10.3540.35	6	6	5	10.3542.35	10	8	5				
40	10.3540.40	6	6	5	10.3542.40	10	8	5				
45					10.3542.45	10	8	5				

Dimensional changes or custom parts made to order. Call us for a quote