



Cable eyelets

Material:

MS = brass

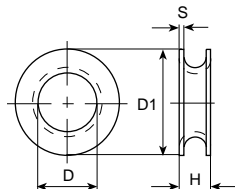
Surface-plating:

Code

bl = clean (0)
 ag = silver-plated (1)
 ni = nickel-plated (5)
 sn = pure tin-plated (7)

Example of order:

4100A.67
 (4100A MS sn)



mm ² (AWG)	für Bolzen pour borne for stud	Artikel-Nr. Numéro d'article Part-No.	øD mm	øD1 mm	H mm	S mm	Stand.- Packg.	Werkzeuge Outils Tools
0.5-0.75 (22-20)	M1.4 – M1.7	4100A.6()	2	3	3.2	0.2	5000	4180.4100A 4180.4100B
	M2 – M2.3	4100B.6()	2.9	6.1	3.0	0.3	2000	
0.75-1 (20-18)	M3.5	4103A.6()	4.5	7.2	3.5	0.3	2000	4180.4103 4180.4104A
	M4	4104A.6()	5	7.8	3.5	0.3	2000	
1 (18)	M3	4102A.6()	3.9	6.2	3.2	0.3	2000	4180.4102A
1-1.5 (18-16)	M2.6	4101.6()	3.4	6.2	3.4	0.3	2000	4180.4100B
1.5 (16)	M3	4102B.6()	3.9	6.8	3.6	0.3	2000	4180.4102A 4180.4104A 4180.4105B 4180.4106A
	M4	4104B.6()	5	8.1	3.5	0.3	2000	
	M5	4105A.6()	6	9	3.5	0.3	1000	
	M6	4106A.6()	7	10.2	4.0	0.3	1000	
2.5 (14)	M4	4104C.6()	5	9.5	4	0.3	1000	4180.4105B 4180.4106A
	M5	4105B.6()	6	10.6	4.3	0.3	1000	
	M6	4106B.6()	7.4	11.4	3.8	0.3	1000	
2.5-4 (14-12)	M8	4108.6()	9	13.6	4.0	0.3	500	4180.4108
4-10 (12-8)	M10	4110.6()	11.4	18.2	6.1	0.5	500	



Zangen für Kabellösen und Nieten

4180

ohne Einsätze
0,5-4 mm²
(AWG 22-12)
für Kabelösen

Gewicht: 300 g
Länge: 150 mm

Einsätze müssen zusätzlich bestellt werden

Pinces pour anneaux de câbles et rivets

4180

sans pièces de rechange
0,5-4 mm²
(AWG 22-12)
pour anneaux de câbles

Poids: 300 g
Longueur: 150 mm

Pièces de rechange à commander
séparément



Tools for cable eyelets and rivets

4180

without inserts
0,5-4 mm²
(AWG 22-12)
for cable eyelets

Weight: 300 g
Length: 150 mm

Inserts to order especially

Einsatzpaar Jeu de matrices Set of inserts

für Kabelösen
pour anneaux de câbles
for cable eyelets

Artikel-Nr.
Numéro d'article
Part-No.

4100A
4100B; 4101
4102A; 4102B
4103A
4104A; 4104B
4105A; 4105B
4106A; 4106B
4108

4180.4100A
4180.4100B
4180.4102A
4180.4103
4180.4104A
4180.4105B
4180.4106A
4180.4108