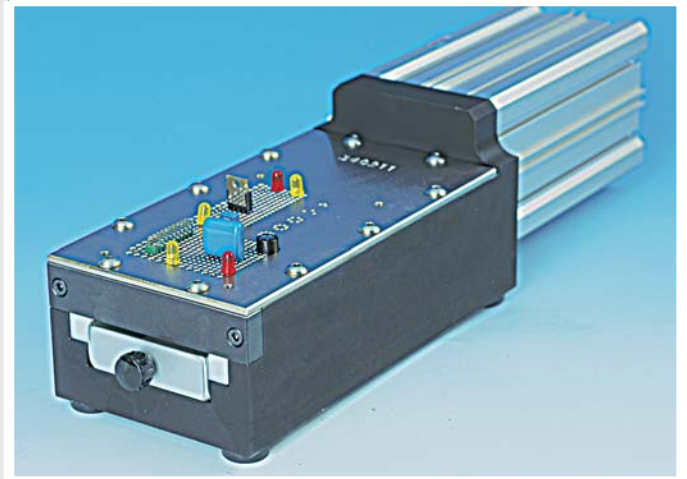
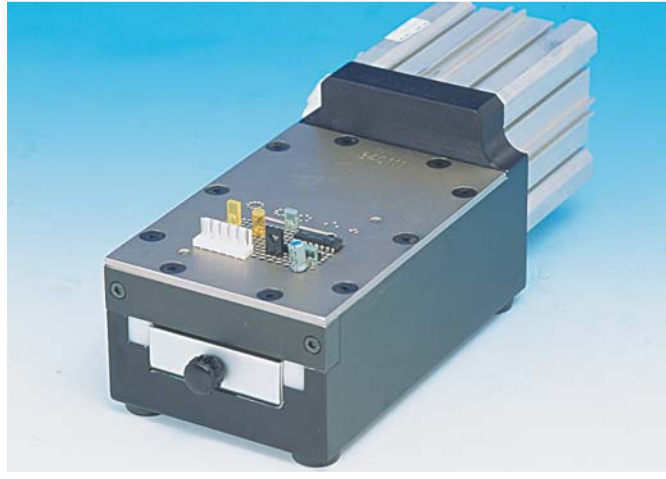


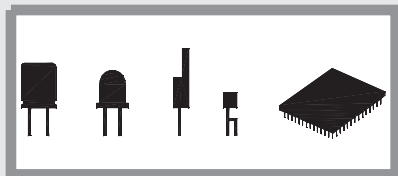
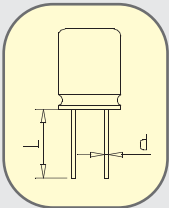
TP/LN 500

pneumatic
cutting machine
for loose
radial
components



TP/LN-500/1
CUTTING AREA 53X43mm (2.09X1.7") - (Cod.340001)
STANDARD STATIONARY PLATE
(Cod.340111)

TP/LN-500/2
CUTTING AREA 53X93mm (2.09x3.66") - (Cod. 340002)
STANDARD STATIONARY PLATE
(Cod.340211)



	MM			INCH		
	min	max	fix	min	max	fix
L			3,2			.125
d	0,3	1,3		.011	.051	

LEAD DIA. = 0,3 - 1,3 mm (.011-.051")
PRODUCTION = 3.000 p/h

LENGTH = 25 cm
WIDTH = 10 cm
HEIGHT = 10 cm
PACKING = 39x25x26 cm
VOLUME = 0,025 m³
MACHINE WEIGHT = 5 kg
GROSS WEIGHT = 6 kg

The pneumatic machine TP/LN-500 cuts the leads of loose radial components by using a "guillotin" type lower blade. This model can handle any kind of components regardless of the diameter, pitch and form.

The force applied by the long cylinder, which is controlled by the foot pedal, allows to obtain the best results with particularly hard materials.

The upper plate to be always ordered with the machine determines the cutting height, which is standard at mm 3,2 (.125 inc.) and the request hole layout.

Additional plates to increase this height can be supplied upon request, starting from 0,5 mm (.019 inc.).

The standard grid pattern accomodates most types of components. Special grid patterns plates can be provided upon request.