



Lötstifte für gedruckte Schaltungen

Picots pour circuits imprimés

Soldering lugs for printed circuitry

Werkstoff:

BZ = Bronze
 CU = Kupfer
 MS = Messing

Oberflächenbehandlung: Code

bl = blank (0)
 ag = versilbert (1)
 au = vergoldet (2)
 sn = verzinkt (8)

Bestellbeispiel:
Exemple de commande:
Example of order:

1001L.68 lose / en vrac / in bulk
 (1001L MS sn)

magaziniert / emmagasiné / wired

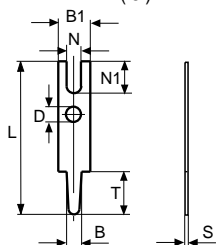
01001L.68
 (01001L MS sn)

Matière:

BZ = bronze
 CU = cuivre
 MS = laiton

Traitements de surface: Code

bl = brut (0)
 ag = argenté (1)
 au = doré (2)
 sn = étamé (8)



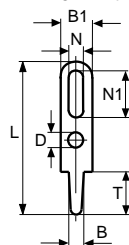
lose / en vrac / in bulk

Material:

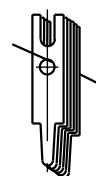
BZ = bronze
 CU = copper
 MS = brass

Surface-plating: Code

bl = clean (0)
 ag = silver-plated (1)
 au = gold-plated (2)
 sn = tin-plated (8)



magaziniert / emmagasiné / wired



Artikel-Nr. Numéro d'article Part-No.	1000K.2() BZ	1001L.6() MS	01001L.6() MS	1001P.6() MS	01001P.6() MS	1001Q.6() MS	01001Q.6() MS
Print Bohrung → Trou Hole	Ø 0.6/0.7	Ø 0.7/0.8	Ø 0.7/0.8	Ø 0.7/0.8	Ø 0.7/0.8	Ø 0.7/0.8	Ø 0.7/0.8
	T 3.5	T 1.5	T 1.5	T 1.5	T 1.5	T 2.5	T 2.5
	L 7.5	L 6.5	L 6.5	L 8.0	L 8.0	L 7.5	L 7.5
	B1 1.6	B1 1.8	B1 1.8	B1 1.8	B1 1.8	B1 1.8	B1 1.8
	N 1.0	N 0.8	N 0.8	N 0.8	N 0.8	N 0.8	N 0.8
	N1 1.2	N1 1.2	N1 1.2	N1 1.2	N1 1.2	N1 1.2	N1 1.2
	D -	D 0.8	D 0.8	D 0.8	D 0.8	D 0.9	D 0.9
	B 0.7	B 0.75	B 0.75	B 0.75	B 0.75	B 0.8	B 0.8
	S 0.4	S 0.4	S 0.4	S 0.4	S 0.4	S 0.4	S 0.4
Stand.-Packg.	2000	2000	5200	2000	5200	2000	5200
Werkzeuge Outils / Tools	1035/2	1035/56	1042Q	1035/56	1042P	1035/56	1042Q

Artikel-Nr. Numéro d'article Part-No.	1001Y.6() MS	01001Y.6() MS	1001.2() BZ	1001M.2() BZ	1004A.2() BZ	01004A.2() BZ	1002T.6() MS
Print Bohrung → Trou Hole	Ø 0.7	Ø 0.7	Ø 0.7	Ø 0.8	Ø 0.9	Ø 0.9	Ø 0.9
	T 2.5	T 2.5	T 3.5	T 5.5	T 2.0	T 2.0	T 2.5
	L 7.5	L 7.5	L 7.5	L 9.3	L 6.0	L 6.0	L 5.5
	B1 1.8	B1 1.8	B1 1.6	B1 1.6	B1 1.9	B1 1.9	B1 2.4
	N 0.8	N 0.8	N 1.0	N 1.0	N 0.8	N 0.8	N 0.8
	N1 1.2	N1 1.2	N1 1.2	N1 0.8	N1 1.0	N1 1.0	N1 2.5
	D 0.9	D 0.9	D -	D -	D 0.9	D 0.9	D 1.2
	B 0.8	B 0.8	B 0.8	B 0.8	B 0.9	B 0.9	B 1.0
	S 0.5	S 0.5	S 0.4	S 0.4	S 0.5	S 0.5	S 0.6
Stand.-Packg.	2000	4800	2000	2000	2000	4800	2000
Werkzeuge Outils / Tools	1035/56	1040Y	1035/2	1035/2	1035/4	1040U	1035/70



Vogt Verbindungstechnik

Spezial-Lötstifte für gedruckte Schaltungen

Picots spéciaux pour circuits imprimés

Special soldering lugs for printed circuitry

Artikel-Nr. Numéro d'article Part-No.	1002U.4 () CU	1003K.6 () MS	1003H.6 () MS	1099K.6 () MS	01099K.6 () MS	1099D.6 () MS	01099D.6 () MS
Print Bohrung Trou Hole	Ø 1.1 T 4.0 L 17.0 B1 3.5 N 1.1 N1 6.0 D 1.2 B 1.0 S 0.5	Ø 1.2 T 1.5 L 10.5 B1 1.0 B2 3.6 N - D - B 1.1 S 0.5	Ø 1.2 T 2.5 L 6.4 B1 2.5 B2 - N - D - B 1.2 S 0.3	Ø 1.2 T 3.5 L 7.3 B1 8.0 B2 - N - D 1.3 B 1.3 S 0.8	Ø 1.2 T 3.5 L 7.3 B1 8.0 B2 - N - D 1.3 B 1.3 S 0.8	Ø 1.2 T 3.6 L 15.6 B1 6.3 N 3.6 N1 5.8 D 1.3 B 1.3 S 0.8	Ø 1.2 T 3.6 L 15.6 B1 6.3 N 3.6 N1 5.8 D 1.3 B 1.3 S 0.8
Stand.-Packg.	2000	2000	2000	2000	2000	2000	2000
Werkzeuge Outils / Tools	1035/91	1035/85	-	1037/42	1049K	1037/23	1049F

Artikel-Nr. Numéro d'article Part-No.	1010.6 () MS	1003Q.2 () BZ	1012.6 () MS	1014.6 () MS	1017W.2 () BZ	1020.6 () MS	1024.6 () MS
Print Bohrung Trou Hole	Ø 1.3 T 3.0 L 8.0 B1 1.4 B2 2.0 N 0.6 N1 1.4 B 1.3 S 0.15	Ø 1.3 T 3.5 L 17.5 B1 2.8 B2 12.4 N 0.6 N1 10.5 B 1.2 S 0.6	Ø 1.4 T 3.0 L 7.5 B1 3.0 B2 - N - D - B 1.4 S 0.6	Ø 1.4 T 3.0 L 12.2 B1 1.4 B2 3.0 N - D - B 1.4 S 0.6	Ø 1.4/1.5 T 4.0 L 8.5 B1 3.6 N 2.4 N1 2.5 D 0.8 B 1.4 S 0.6	Ø 1.5 T 4.0 L 18.0 B1 1.7 B2 2.3 N 0.7/0.8 N1 1.5/2.5 B 1.7 S 0.25	Ø 1.1/1.9 T 5.0/12.5 L 36.5 B1 3.0 B2 - N - D 1.0 B 1.0/2.0 S 0.5
Stand.-Packg.	2000	2000	2000	2000	2000	2000	1000
Werkzeuge Outils / Tools	1035/10	1035/62	1035/62	1035/66	-	1035/78	-

Artikel-Nr. Numéro d'article Part-No.	1023.6 () MS	1019C.6 () MS	01019C.6 () MS	1019G.6 () MS	01019G.6 () MS	1019B.6 () MS	01019B.6 () MS
Print Bohrung Trou Hole	Ø 2.1/2.2 T 4.0 L 24.0 B1 4.8 N 2.2 N1 5.0 D - B 2.2 S 0.8	Ø - T 5.6 L 11.1 B1 0.8 B2 7.5 N - D 1.2 B 3.0 S 0.8	Ø - T 5.6 L 11.1 B1 0.8 B2 7.5 N - D 1.2 B 3.0 S 0.8	Ø - T 5.6 L 13.1 B1 0.8 B2 7.5 N - D 1.0 B 3.0 S 0.8	Ø - T 5.6 L 13.1 B1 0.8 B2 7.5 N - D 1.0 B 3.0 S 0.8	□ 3x0.8 T 8.0 L 23.7 B1 0.8 B2 5.0 N - D 1.2 B 3.0 S 0.8	□ 3x0.8 T 8.0 L 23.7 B1 0.8 B2 5.0 N - D 1.2 B 3.0 S 0.8
Stand.-Packg.	1000	1000	2000	1000	2000	2000	1820
Werkzeuge Outils / Tools	1037/41	-	1049E	-	1049G	-	1049M



Nietlötösen für gedruckte Schaltungen

Cosses à river pour circuits imprimés

Eyelet terminals for printed circuitry

Werkstoff:

MS = Messing

Oberflächenbehandlung: Code

bl = blank (0)
 ag = versilbert (1)
 au = vergoldet (2)
 sn = verzinkt (8)

Bestellbeispiel:
Exemple de commande:
Example of order:

1029.68
 (1029 MS sn)

Matière:

MS = laiton

Traitements de surface: Code

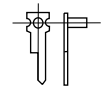
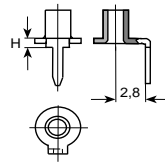
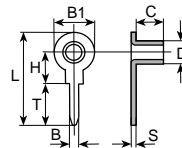
bl = brut (0)
 ag = argenté (1)
 au = doré (2)
 sn = étamé (8)

Material:

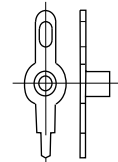
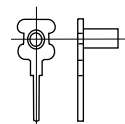
MS = brass

Surface-plating: Code

bl = clean (0)
 ag = silver-plated (1)
 au = gold-plated (2)
 sn = tin-plated (8)



Artikel-Nr. Numéro d'article → Part-No.	1029.6() MS	102990.6() MS	1032.6() MS	1034.6() MS
Print Bohrung → Trou Hole	Ø 1.0 T 6.0 L 12.7 B1 5.5 H 4.0 D 3.0 C 4.0 B 1.0 S 0.5	Ø 1.0 T 6.0 L 11.0 B1 5.5 H 1.0 D 3.0 C 4.0 B 1.0 S 0.5	Ø 1.1 T 3.5 L 8.5 B1 2.0 H 4.0 D 1.2 C 1.5 B 1.1 S 0.25	Ø 1.2 T 5.4 L 9.5 B1 3.0 H 3.0 D 1.4 C 3.2 B 1.2 S 0.25
Stand.-Packg.	2000	2000	2000	2000
Werkzeuge Outils / Tools	-	-	-	-



Artikel-Nr. Numéro d'article → Part-No.	1036.6() MS	1038.6() MS	1031.6() MS	1039.6() MS
Print Bohrung → Trou Hole	Ø 1.2 T 4.5 L 10.5 B1 3.0 H 5.0 D 1.4 C 3.2 B 1.2 S 0.25	Ø 1.8 T 6.5 L 9.0 B1 3.0 H 1.2 D 1.4 C 3.2 B 1.8 S 0.25	Ø 1.1 T 6.5 L 13.5 B1 5.0 H 4.5 D 2.0 C 4.5 B 1.2 S 0.3	Ø 1.2 T 4.0 L 19.5 B1 5.5/3.0 H 6.2 D 3.0 C 3.2 B 1.2 S 0.35
Stand.-Packg.	2000	2000	2000	2000
Werkzeuge Outils / Tools	-	-	-	-



Kurzschlussbrücken für gedruckte Schaltungen

Ponts pour circuits imprimés

Jumpers for printed circuitry

Werkstoff:
 MS au = Messing vergoldet
 Oberflächenbehandlung:
 2 my ni + 0,1 my au

Matière:
 MS au = laiton doré
 Traitement de surface:
 2 my ni + 0,1 my au

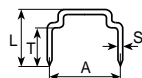
Material:
 MS au = gold-plated brass
 Surface-plating:
 2 my ni + 0,1 my au

Bestellbeispiel:
Exemple de commande:
Example of order:

8500.62
 (8500 MS au)



A mm	L mm	S mm	Werkstoff Matière Material	Stand.- Packg.	Artikel-Nr. Numéro d'article Part-No.
2.54	5.0	∅ 0.5 - ∅ 0.56	MS au	1000	8500.62
5.08	5.0	∅ 0.5 - ∅ 0.56	MS au	1000	8502.62



A mm	T mm	L mm	S mm	Werkstoff Matière Material	Stand.- Packg.	Artikel-Nr. Numéro d'article Part-No.
7.62	3.8	6.0	∅ 0.5 - ∅ 0.56	MS au	1000	8504.62
10.16	3.8	6.0	∅ 0.5 - ∅ 0.56	MS au	1000	8506.62

Kurzschlussbrücken isoliert

Ponts isolés

Insulated jumpers

Werkstoff:
 Isolator:
 PBT mit Glasfaser
 UL-geprüft

Matière:
 Isolation:
 PBT avec fibre de verre
 Autorisé UL

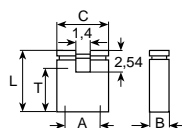
Material:
 Insulation:
 Glasfilled polyester
 UL-approved

Kontakte:
 BZ au = Bronze 0,25 my vergoldet

Contacts:
 BZ au = bronze doré 0,25 my

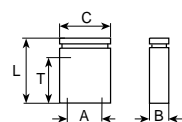
Contacts:
 BZ au = 0,25 my gold-plated bronze

OPEN



A mm	T mm	L mm	C mm	B mm	Farben Couleurs Colours	Stand.- Packg.	Artikel-Nr. Numéro d'article Part-No.
2.54	3.8	5.97	4.98	2.44	blau rot schwarz	500 500 500	8600.22 8601.22 8602.22

CLOSE



A mm	T mm	L mm	C mm	B mm	Farben Couleurs Colours	Stand.- Packg.	Artikel-Nr. Numéro d'article Part-No.
2.54	3.8	6.47	4.98	2.44	blau rot schwarz	500 500 500	8610.22 8611.22 8612.22



Lötbrücken für gedruckte Schaltungen

Contacts shuntés pour circuits imprimés

Bridge connectors for printed circuitry

Werkstoff:

BZ = Bronze
 CU = Kupfer
 MS = Messing
 ST = Stahl

Oberflächenbehandlung: Code

bl = blank (0)
 ag = versilbert (1)
 au = vergoldet (2)
 sn = verzinkt (8)

Bestellbeispiel:
Exemple de commande:
Example of order:

1098B.68
 (1098B MS sn)

Matière:

BZ = bronze
 CU = cuivre
 MS = laiton
 ST = acier

Traitements de surface: Code

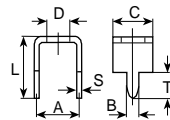
bl = brut (0)
 ag = argenté (1)
 au = doré (2)
 sn = étamé (8)

Material:

BZ = bronze
 CU = copper
 MS = brass
 ST = steel

Surface-plating: Code

bl = clean (0)
 ag = silver-plated (1)
 au = gold-plated (2)
 sn = tin-plated (8)



Artikel-Nr. Numéro d'article Part-No.	1098B.6() MS	1098C.6() MS	1098H.6() MS	1099S.2() BZ	1098L.6() MS	1098R.6() MS	1099K.6() MS
Print Bohrung → Trou Hole	Ø 0.8 T 2.5 L 4.3 C 2.7 A 8.0 D 1.4 B 0.8 S 0.3	Ø 0.8 T 2.5 L 4.3 C 2.7 A 8.0 D 1.4 B 0.8 S 0.3	Ø 0.8 T 2.5 L 6.7 C 2.7 A 12.7 D 1.5 B 0.8 S 0.3	Ø 1.0 T 5.4 L 7.4 C 5.0 A 4.2 D - B 0.8 S 0.73	Ø 1.0/1.5 T 2.0/3.0 L 5.0 C 6.0 A 7.5 D 3.5 B 0.9/1.5 S 0.5	siehe Seite 198 voir page 198 see page 198	siehe Seite 116A voir page 116A see page 116A
Stand.-Packg.	5000	5000	2000	2000	2000		
Werkzeuge Outils / Tools	-	-	-	-	-		

Artikel-Nr. Numéro d'article Part-No.	1098M.6() MS	1098A.6() MS	1098F.6() MS	1098S.4() CU	1098T.6() MS	1098P.() ST	1098U.6() MS
Print Bohrung → Trou Hole	Ø 1.3 T 3.1 L 8.2 C 3.1 A 5.2 D - B 1.3 S 0.5	Ø 1.4 T 3.5 L 8.0 C 5.5 A 6.5 D 3.2 B 1.4 S 0.5	Ø 1.5 T 3.0 L 8.0 C 7.5 A 7.5 D 3.2 B 1.5 S 0.5	Ø 1.5/1.6 T 4.8 L 5.4 C 1.5 A 5.0 D - B 1.5 S 0.6	Ø 1.5 T 3.5 L 6.5 C 6.2 A 7.5 D M3 B 1.5 S 0.5	Ø 1.5 T 3.5 L 9.8 C 9.2 A 8.2 D M3.5 B 1.2 S 1.0	Ø 1.6 T 3.0 L 10.0 C 7.0 A 7.5 D M4 B 1.5 S 0.8
Stand.-Packg.	2000	1000	1000	2000	2000	1000	1000
Werkzeuge Outils / Tools	-	-	-	-	-	-	-

Wussten Sie, dass ...

... für Vogt-Elektronikbauteile passende Bestückungsgeräte verfügbar sind.

... im Hause das Leiterplatten-Bestücken als Dienstleistung angeboten wird.
Wir bestücken Ihre Leiterplatten mit unseren Qualitätsbauteilen.

Unsere Abteilung Technik steht Ihnen für Auskünfte und Anfragen gerne zur Verfügung.

Did you know ...

... that we can offer PCB insertion machines for manual, automatic and CNC programmes.

... that we can advise on insertion tooling and equipment and offer a wide range of parts and terminations for use with our PCB insertion tooling.

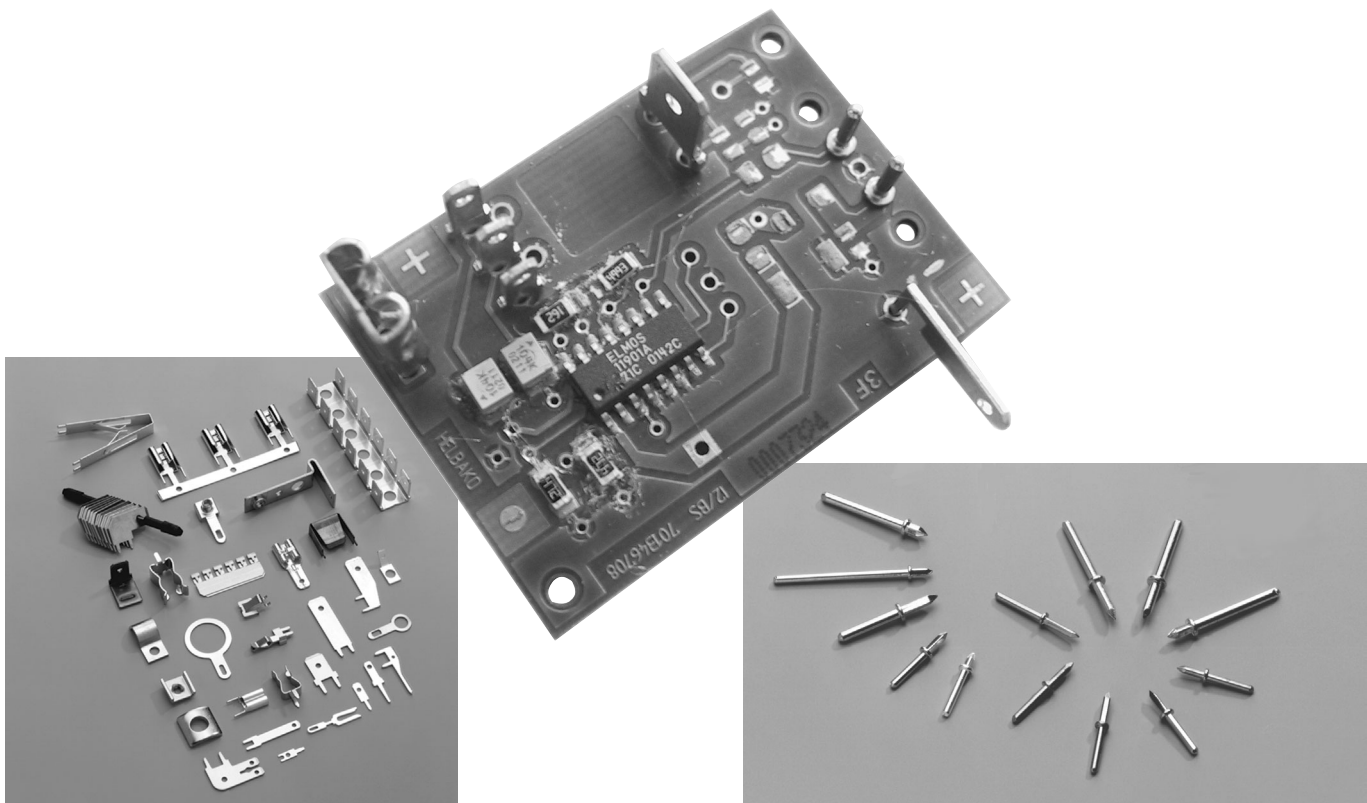
Our Technical Department is always at our disposal.

Saviez-vous que ...

... nous vous proposons des magasins d'alimentation pour circuits imprimés depuis les petits exécutions jusqu'à la version CNC.

... nous pouvons vous monter, en sous-traitance, nos pièces sur vos circuits imprimés.

Notre département technique est à votre disposition pour des renseignements et informations.





Vogt Verbindungstechnik

Steckerstifte

Fiches de goupille

Seamless pins

Werkstoff:
MS = Messing

Matière:
MS = laiton

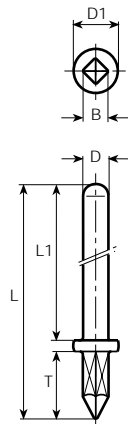
Material:
MS = brass

Oberflächenbehandlung: Code
bl = blank (0)
ag = versilbert (1)
au = vergoldet (2)
ni = vernickelt (5)
sn = verzinkt (8)

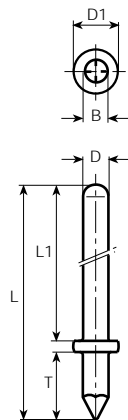
Traitements de surface: Code
bl = brut (0)
ag = argenté (1)
au = doré (2)
ni = nickelé (5)
sn = étamé (8)

Surface-plating: Code
bl = clean (0)
ag = silver-plated (1)
au = gold-plated (2)
ni = nickel-plated (5)
sn = tin-plated (8)

Bestellbeispiel:
Exemple de commande: **1364A.68**
Example of order: (1364 A MS sn)



D mm	L mm	T mm	L1 mm	D1 mm	B mm	Werkstoff Matière Material	Stand.- Packg. 2'000	Artikel-Nr. Numéro d'article Part-No.	Werkzeug Outils Tools
ø 1	9.5	2.4	6.6	ø 2	1.05	MS	•	1364A.6()	1035/85
	10	3.5	6	ø 2	1.05	MS	•	1364E.6()	1035/85
	10.8	4.5	5.8	ø 2	1.05	MS	•	1364C.6()	1035/85
	11	4.5	6	ø 2	1.05	MS	•	1364G.6()	1035/85
	11.5	3	8	ø 2	1.05	MS	•	1364B.6()	1035/86
	12.5	5	7	ø 2	1.05	MS	•	1364F.6()	1035/85
	15.5	3	12	ø 2	1.05	MS	•	1364D.6()	1035/86
	18	6	11.5	ø 2	1.05	MS	•	1364R.6()	1035/86
	20	2.5	17	ø 2	1.05	MS	•	1364Q.6()	1035/86
	ø 1.3	11	4.5	6	ø 2.5	1.4	MS	1000	1365A.6()
12.5		3.8	8.1	ø 2.5	1.4	MS	1000	1365F.6()	1035/83
13.5		5	8	ø 2.5	1.4	MS	1000	1365B.6()	1035/83
13.5		5.5	7.5	ø 2.5	1.4	MS	1000	1365C.6()	1035/83
14.7		2.5	11.7	ø 2.5	1.4	MS	1000	1365D.6()	1035/83
15.9		5.7	9.7	ø 2.5	1.4	MS	1000	1365E.6()	1035/83
16		3	12.5	ø 2.5	1.4	MS	1000	1365M.6()	1035/83
ø 1.33	9.5	3.5	5.5	ø 2.5	1.43	MS	•	1365.6()	1035/84



D mm	L mm	T mm	L1 mm	D1 mm	B mm	Werkstoff Matière Material	Stand.- Packg. 1'000	Artikel-Nr. Numéro d'article Part-No.	Werkzeug Outils Tools
ø 1	10	3.5	6	ø 2	ø 1	MS	•	1364P.6()	1035/85
	11	4.5	6	ø 2	ø 1	MS	•	1364K.6()	1035/85
	15	8.5	6	ø 2	ø 1	MS	•	1364M.6()	1035/85
	15.4	6	8.9	ø 2	ø 1	MS	•	1364H.6()	1035/86
	15.4	9	5.9	ø 2	ø 1	MS	•	1364L.6()	1035/85
ø 1.3	16.2	5.9	9.8	ø 2.5	ø 1.3	MS	•	1365L.6()	1035/83

Andere Abmessungen auf Anfrage

Autres dimensions sur demande

Further dimensions on request