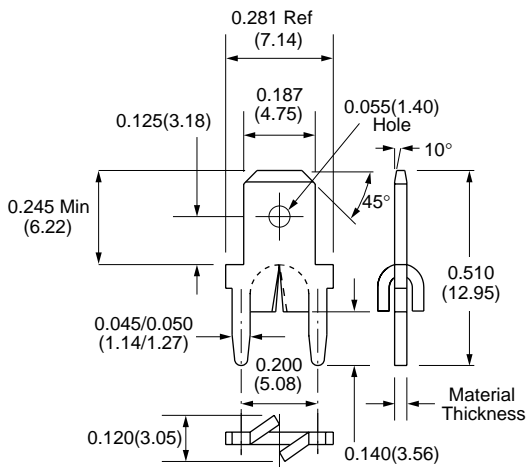


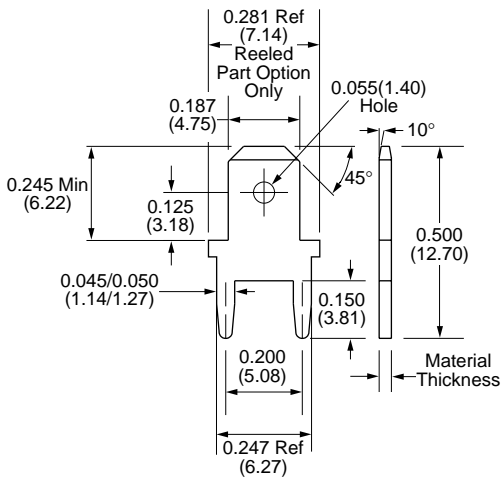
0.187" (4.75mm) Quick Disconnect Terminals



Loose Part No.	1027	1024
Reeled Part No.	6027-6	6024-6
Mounting Type	Stable-Lok™ Splay Outward or Inward	Stable-Lok™ Splay Outward or Inward
Material Thickness/ Type	0.020" (0.51mm) Brass	0.032" (0.81mm) Brass
Standard Finish	Loose: 100% Matt Tin over Copper Reeled: 95/5 Matt Tin/Lead over Copper	
Mounting Hole Diameter	0.050" ±0.003" (1.27mm ±0.076mm)	0.058" ±0.003" (1.47mm ±0.076mm)
Applicator System	Loose: ZPT81-A Reeled: Model 9700, 9718	

U.S. Patent No. 4,688,866

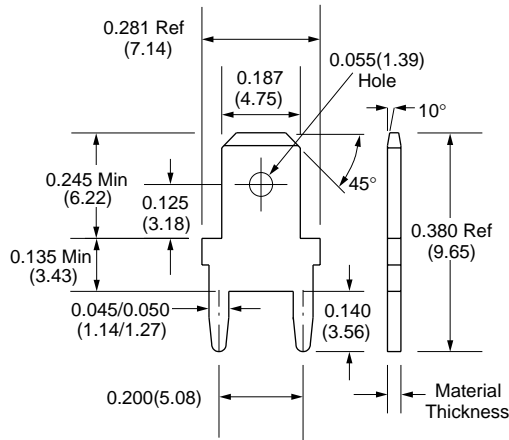
For exact finish specifications and available special finishes, see Finish Table (page 91).



Loose Part No.	895	894
Reeled Part No.	6895-6	6894-6
Mounting Type	Outward or Inward Splay	Outward or Inward Splay
Material Thickness/ Type	0.020" (0.51mm) Brass	0.032" (0.81mm) Brass
Standard Finish	100% Matt Tin over Copper	
Mounting Hole Diameter	0.050" ±0.003" (1.27mm ±0.076mm)	0.058" ±0.003" (1.47mm ±0.076mm)
Applicator System	Loose: ZPT81-A, 9700, 9718	

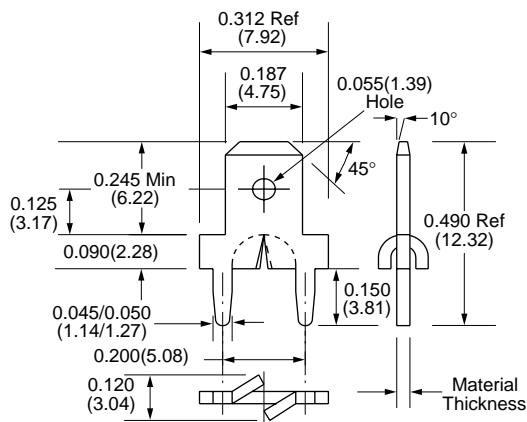
For exact finish specifications and available special finishes, see Finish Table (page 91).

0.187" (4.75mm) Quick Disconnect Terminals



Loose Part No.	N/A	N/A
Reeled Part No.	6134-6	6142-6
Mounting Type	Outward or Inward Splay	Outward or Inward Splay
Material Thickness/ Type	0.020" (0.51mm) Brass	0.032" (0.81mm) Brass
Standard Finish	Reeled: 95/5 Matt Tin/Lead over Copper	
Mounting Hole Diameter	0.050" ±0.003" (1.27mm ±0.076mm)	0.058" ±0.003" (1.47mm ±0.076mm)
Applicator System	Loose: ZPT81-A Reeled: Model 9700, 9718	

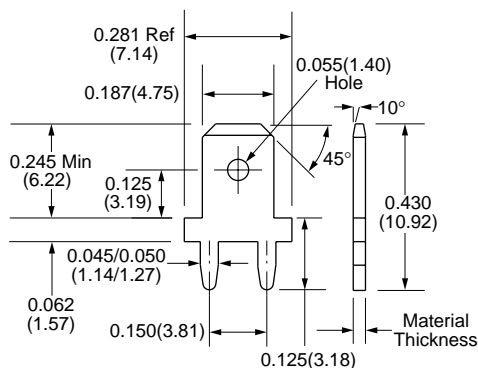
For exact finish specifications and available special finishes, see Finish Table (page 91).



Loose Part No.	N/A	1141
Reeled Part No.	6140-6	6141-6
Mounting Type	Stable-Lok™ Splay Outward or Inward	Stable-Lok™ Splay Outward or Inward
Material Thickness/ Type	0.020" (0.51mm) Brass	0.032" (0.81mm) Brass
Standard Finish	Loose: 100% Matt Tin over Copper Reeled: 95/5 Matt Tin/Lead over Copper	
Mounting Hole Diameter	0.050" ±0.003" (1.27mm ±0.076mm)	0.058" ±0.003" (1.47mm ±0.076mm)
Applicator System	Loose: ZPT81-A Reeled: Model 7000, 9700, 9718, 9712	

U.S. Patent No. 4,688,866

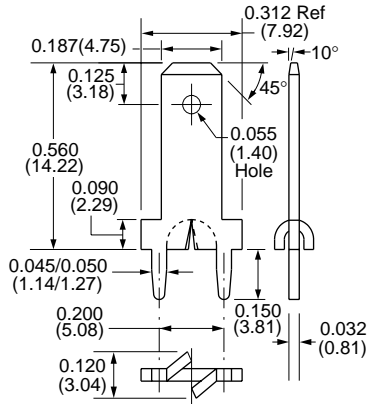
For exact finish specifications and available special finishes, see Finish Table (page 91).



Loose Part No.	N/A	N/A
Reeled Part No.	6078-6	6077-6
Mounting Type	Outward or Inward Splay	Outward or Inward Splay
Material Thickness/ Type	0.020" (0.51mm) Brass	0.032" (0.81mm) Brass
Standard Finish	Loose: 100% Matt Tin over Copper Reeled: 95/5 Matt Tin/Lead over Copper	
Mounting Hole Diameter	0.050" ±0.003" (1.27mm ±0.076mm)	0.058" ±0.003" (1.47mm ±0.076mm)
Applicator System	Loose: ZPT81-A Reeled: Model 7000, 9700, 9718, 9712	

For exact finish specifications and available special finishes, see Finish Table (page 91).

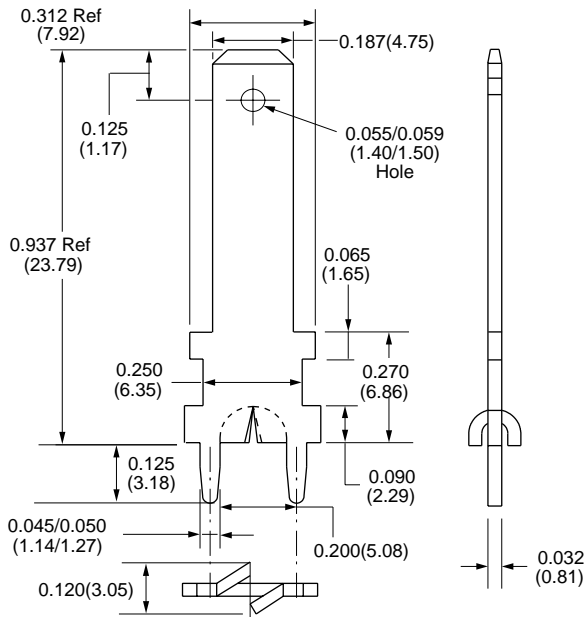
0.187" (4.75mm) Quick Disconnect Terminals



Loose Part No.	1042
Reeled Part No.	6042-6
Mounting Type	Stable-Lok™ Splay Outward or Inward
Material Thickness/Type	0.032" (0.81mm) Brass
Standard Finish	Loose: 100% Matt Tin over Copper Reeled: 95/5 Matt Tin/Lead over Copper
Mounting Hole Diameter	0.058" ±0.003" (1.47mm ±0.076mm)
Applicator System	Loose: ZPT81-A Reeled: Model 7000, 9700, 9718

U.S. Patent No. 4,688,866

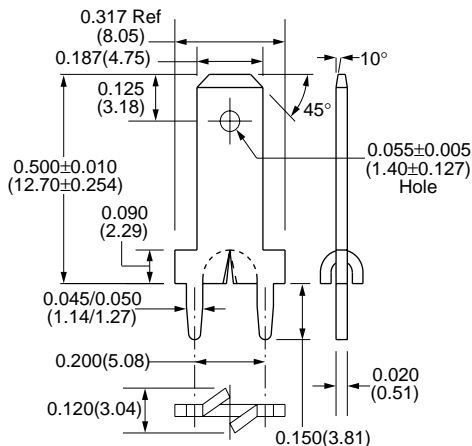
For exact finish specifications and available special finishes, see Finish Table (page 91).



Loose Part No.	1172
Reeled Part No.	6172-6
Mounting Type	Stable-Lok™ Splay Outward or Inward
Material Thickness/Type	0.032" (0.81mm) Brass
Standard Finish	Loose: 100% Matt Tin over Copper Reeled: 95/5 Matt Tin/Lead over Copper
Mounting Hole Diameter	0.058" ±0.003" (1.47mm ±0.076mm)
Applicator System	Loose: ZPT81-A Reeled: Model 9700, 9718

U.S. Patent No. 4,688,866

For exact finish specifications and available special finishes, see Finish Table (page 91).



Loose Part No.	1166
Reeled Part No.	6166-6
Mounting Type	Stable-Lok™ Splay Outward or Inward
Material Thickness/Type	0.020" (0.51mm) Brass
Standard Finish	Loose: 100% Matt Tin over Copper Reeled: 95/5 Matt Tin/Lead over Copper
Mounting Hole Diameter	0.058" ±0.003" (1.47mm ±0.076mm)
Applicator System	Loose: ZPT81-A Reeled: Model 9700, 9718

U.S. Patent No. 4,688,866

For exact finish specifications and available special finishes, see Finish Table (page 91).