



# Vogt Verbindungstechnik

## Kontaktkappen

## Chapes de contact

## Contact caps

Werkstoff :

MS = Messing

Oberflächenbehandlung:

bl = blank (0)  
 ag = versilbert (1)  
 au = vergoldet (2)  
 ni = vernickelt (5)

**Bestellbeispiel:**  
**Exemple de commande:**  
**Example of order:**

**1466.61**  
 (1466 MS ag)

Matière:

MS = laiton

Traitements de surface:

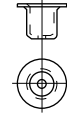
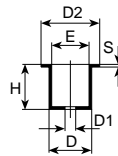
bl = brut (0)  
 ag = argenté (1)  
 au = doré (2)  
 ni = nickelé (5)

Material:

MS = brass

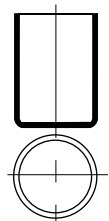
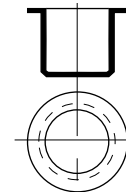
Surface-plating:

bl = clean (0)  
 ag = silver-plated (1)  
 au = gold-plated (2)  
 ni = nickel-plated (5)



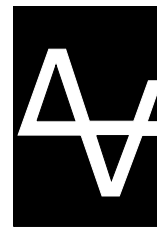
Artikel-Nr.  
 Numéro d'article →  
 Part-No.

	<b>1466.6( ) MS</b>	<b>1411.6( ) MS</b>	<b>1444.6( ) MS</b>	<b>1469.6( ) MS</b>	<b>1467.6( ) MS</b>	<b>1468.6( ) MS</b>	<b>1421A.6( ) MS</b>
D	1.7	3.0	3.8	4.0	4.1	4.1	4.65
E	1.1	2.6	3.3	3.5	3.3	3.5	3.6
H	6.5	2.7	8.0	12.0	4.6	8.8	3.0
D1	-	1.8	-	-	0.8	-	1.0
D2	2.5	-	3.8	5.0	6.5	6.5	-
S	0.3	0.2	0.25	0.25	0.4	0.3	0.2
Stand.-Packg.	5000	5000	5000	2000	5000	2000	5000



Artikel-Nr.  
 Numéro d'article →  
 Part-No.

	<b>1421B.6( ) MS</b>	<b>1420.6( ) MS</b>	<b>1436.6( ) MS</b>	<b>1438.6( ) MS</b>	<b>1428.6( ) MS</b>	<b>1453.6( ) MS</b>	<b>1454.6( ) MS</b>
D	4.65	5.0	5.0	5.0	6.7	9.0	11.0
E	4.1	4.5	4.5	4.6	6.2	8.4	10.2
H	3.0	4.8	5.35	5.0	5.2	9.0	15.0
D1	1.0	0.85	-	1.5	-	-	-
D2	-	-	-	-	-	13.2	-
S	0.2	0.25	0.25	0.2	0.25	0.3	0.4
Stand.-Packg.	5000	5000	5000	5000	2000	1000	1000



## Bundhülsen

## Douilles à collet

## Collar sleeves

Werkstoff:

MS = Messing

Oberflächenbehandlung: Code

bl = blank (0)  
 ag = versilbert (1)  
 au = vergoldet (2)  
 ni = vernickelt (5)  
 sn = verzinkt (8)

**Bestellbeispiel:**  
**Exemple de commande:**  
**Example of order:**

**U1002522068**

(U1.0 x 0.20 x 2.5 x 2.2 MS sn)

Matière:

MS = laiton

Traitements de surface: Code

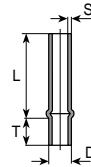
bl = brut (0)  
 ag = argenté (1)  
 au = doré (2)  
 ni = nickelé (5)  
 sn = étamé (8)

Material:

MS = brass

Surface-plating: Code

bl = clean (0)  
 ag = silver-plated (1)  
 au = gold-plated (2)  
 ni = nickel-plated (5)  
 sn = tin-plated (8)



D mm	S mm	L mm	T mm	Stand.-Packg.		Artikel-Nr. Numéro d'article Part-No.
				2'000	5'000	
1.0	0.20	2.5	2.2		•	U100252206( )
	0.20	4.5	2.0		•	U1004520206( )
	0.20	5.0	1.0		•	U1005010206( )
	0.20	6.0	2.0		•	U1006020206( )
	0.20	6.0	2.5		•	U1006025206( )
	0.20	6.0	4.5		•	U1006045206( )
	0.20	9.5	2.0		•	U1009520206( )
	0.20	10.0	1.2		•	U1010012206( )
	0.20	10.0	1.4		•	U1010014206( )
	0.20	11.0	2.5		•	U1011025206( )
1.2	0.20	13.0	2.5	•	•	U1013025206( )
	0.20	18.0	2.0	•	•	U1018020206( )
	0.20	2.5	2.5		•	U1202525206( )
	0.30	2.5	2.5		•	U1202525306( )
	0.25	3.6	2.0		•	U1203620256( )
	0.25	6.5	2.5		•	U1206525256( )
	0.20	8.5	4.0		•	U1208540206( )
	0.20	5.2	1.5		•	U1205215206( )
	0.25	6.0	3.0		•	U1306030256( )
	0.25	7.5	2.5		•	U1307525256( )
1.25	0.25	10.0	3.0	•	•	U1310030256( )
	0.25	13.0	2.5	•	•	U1313025256( )
	0.25	13.5	4.0	•	•	U1313540256( )
	0.20	16.0	2.5	•	•	U1316025206( )
	0.20	19.0	3.0	•	•	U1319030206( )
	0.25	20.0	4.0	•	•	U1320040256( )
	0.20	21.0	3.0	•	•	U1321030206( )
	0.20	24.0	3.0	•	•	U1324030206( )
	0.20	31.0	3.0	•	•	U1331030206( )
	0.25	10.0	2.5	•	•	U1410025256( )
1.4	0.25	11.5	11.0	•	•	U1411511256( )
	0.25	23.0	3.0	1000	•	U1423030256( )
	0.20	5.0	2.5		•	U1505025206( )
	0.20	5.0	2.7		•	U1505027206( )
	0.30	14.0	3.0	•	•	U1514030306( )
	0.30	15.0	3.0	•	•	U1515030306( )
	0.30	17.5	2.5	•	•	U1517525306( )
	0.25	19.0	1.6	•	•	U1519016256( )
	0.30	21.0	2.0	1000	•	U1521020306( )
	0.30	24.0	3.0	1000	•	U1524030306( )
1.5	0.25	10.0	2.5	•	•	U1610025256( )
	0.20	29.0	2.5	1000	•	U1629025206( )
	0.25	3.6	3.0		•	U1703630256( )
	0.20	4.5	2.5		•	U1704525206( )
1.6	0.20	5.4	2.5		•	U1705425206( )
	0.25	18.0	3.0	1000	•	U1718030256( )
	0.25	33.6	3.0	500	•	U1733630256( )

D mm	S mm	L mm	T mm	Stand.-Packg.		Artikel-Nr. Numéro d'article Part-No.	
				2'000	5'000		
1.8	0.30	5.0	1.5		•	U1805015306( )	
	0.20	7.0	2.5		•	U1807025206( )	
1.95	0.20	7.0	3.0	•	•	U1907030206( )	
	2.0	0.30	7.0	3.0	•	U2007030306( )	
2.0	0.20	9.5	2.5	•	•	U2009525206( )	
	0.25	9.5	2.5	•	•	U2009525256( )	
	0.25	12.0	3.0	•	•	U2012030256( )	
	0.25	16.0	3.0	•	•	U2016030256( )	
	0.30	20.0	2.5	1000	•	U2020025306( )	
	0.25	20.0	3.0	1000	•	U2020030256( )	
	0.30	47.0	3.0	1000	•	U2047030306( )	
	2.4	0.25	12.0	2.0	•	U2412020256( )	
	2.5	0.25	11.0	2.5	•	•	U2511025256( )
		0.25	11.0	3.2	•	•	U2511032256( )
3.0	0.25	11.0	4.0	•	•	U2511040256( )	
	0.25	18.0	2.5	•	•	U2518025256( )	
	0.25	18.0	3.2	•	•	U2518032256( )	
	0.25	18.0	4.0	•	•	U2518040256( )	
	0.30	5.5	2.0	•	•	U3005520306( )	
	0.30	5.5	3.0	•	•	U3005530306( )	
	0.30	6.4	2.7	•	•	U3006427306( )	
	0.30	7.0	3.0	•	•	U3007030306( )	
	0.30	9.0	3.0	1000	•	U3009030306( )	
	0.40	10.0	17.0	1000	•	U3010017406( )	
3.5	0.30	14.0	2.5	1000	•	U3014025306( )	
	0.30	21.0	4.0	1000	•	U3021040306( )	
	0.30	25.8	8.0	1000	•	U3025880306( )	
	0.30	13.0	12.0	1000	•	U3513012306( )	
	4.0	0.30	3.6	4.0	1000	•	U4003640306( )
		0.30	4.4	4.0	1000	•	U4004440306( )
	0.30	6.3	1.7	1000	•	U4006317306( )	
	0.40	8.0	3.0	1000	•	U4008030406( )	
	0.40	9.5	3.0	1000	•	U4009530406( )	
	0.40	14.0	2.5	1000	•	U4014025406( )	
4.5	0.25	17.0	3.0	500	•	U4017030256( )	
	0.25	22.5	4.5	500	•	U4522545256( )	
4.7	0.30	19.5	5.5	1000	•	U4719555306( )	
	5.0	0.30	10.0	3.0	1000	•	U5010030306( )
5.0	0.50	14.0	3.0	500	•	U5014030506( )	
	0.50	17.0	3.0	500	•	U5017030506( )	
	0.50	34.0	3.0	500	•	U5034030506( )	
	0.50	9.0	3.0	1000	•	U5509030506( )	
	0.50	12.0	3.0	1000	•	U5512030506( )	
	0.50	12.5	3.0	1000	•	U5512530506( )	
	0.50	22.0	3.0	1000	•	U5522030506( )	
	6.0	0.50	10.0	3.0	500	•	U6010030506( )
	8.0	0.50	15.0	4.0	500	•	U8015040506( )



## Doppelbundhülsen

## Douilles à double collet

## Double collar sleeves

Werkstoff:

MS = Messing

Oberflächenbehandlung: Code

bl = blank (0)  
 ag = versilbert (1)  
 au = vergoldet (2)  
 ni = vernickelt (5)  
 sn = verzinkt (8)

**Bestellbeispiel:**

**Exemple de commande:**

**Example of order:**

**W15045202068**

(W1.5 x 0.3 x 4.5 x 2 x 2 MS sn)

Matière:

MS = laiton

Traitements de surface: Code

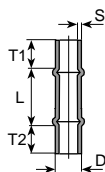
bl = brut (0)  
 ag = argenté (1)  
 au = doré (2)  
 ni = nickelé (5)  
 sn = étamé (8)

Material:

MS = brass

Surface-plating: Code

bl = clean (0)  
 ag = silver-plated (1)  
 au = gold-plated (2)  
 ni = nickel-plated (5)  
 sn = tin-plated (8)



øD mm	S mm	L mm	T1 mm	T2 mm	Stand.-Packg.		Artikel-Nr. Numéro d'article Part-No.
					500	1'000	
<b>1.5</b>	0.3	4.5	2	2	2000		<b>W1504520206( )</b>
	0.3	12.8	3	3		•	<b>W1512830306( )</b>
	0.3	18	4	4		•	<b>W1518040406( )</b>
	0.2	22	3	3	2000		<b>W1522030306( )</b>
<b>1.7</b>	0.25	18	3	3		•	<b>W1718030306( )</b>
	0.25	22.5	3	3		•	<b>W1722530306( )</b>
	0.25	30.6	3	3		•	<b>W1730630306( )</b>
<b>2</b>	0.3	37	3	3		•	<b>W2037030306( )</b>
	0.3	55	3	3		•	<b>W2055030306( )</b>
<b>2.5</b>	0.3	6	4	4		•	<b>W2506040406( )</b>
	0.3	15	1.6	5.5		•	<b>W2515016556( )</b>
<b>3.3</b>	0.3	6	3.9	3.6		•	<b>W3306039366( )</b>
	0.4	6	4	5		•	<b>W3306040506( )</b>
	0.3	7.4	2.4	3.7		•	<b>W3307424376( )</b>



## Löthülsen gerollt

## Douilles roulées

## Rolled soldering sleeves

Werkstoff:

MS = Messing

Oberflächenbehandlung: Code

bl = blank (0)  
ag = versilbert (1)  
au = vergoldet (2)  
ni = vernickelt (5)  
sn = verzinkt (8)

**Bestellbeispiel:**  
**Exemple de commande:**  
**Example of order:**

**1202.68**  
(1202 MS sn)

Matière:

MS = laiton

Traitements de surface: Code

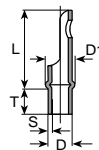
bl = brut (0)  
ag = argenté (1)  
au = doré (2)  
ni = nickelé (5)  
sn = étamé (8)

Material:

MS = brass

Surface-plating: Code

bl = clean (0)  
ag = silver-plated (1)  
au = gold-plated (2)  
ni = nickel-plated (5)  
sn = tin-plated (8)



Artikel-Nr.  
Numéro d'article →  
Part-No.

	1202.6( ) MS	1208.6( ) MS	1210.6( ) MS	1212.6( ) MS	1214.6( ) MS	1216.6( ) MS	1220.6( ) MS	1222.6( ) MS	1228.6( ) MS
D	1.5	2.0	2.0	2.0	2.0	2.0	2.0	2.0	2.0
T	2.0	2.0	2.5	3.0	3.5	4.5	-	2.0	3.0
L	8.0	8.0	8.0	8.0	8.0	8.0	10.0	11.0	17.0
D1	2.0	3.0	3.0	3.0	3.0	3.0	3.0	3.0	3.0
S	0.2	0.3	0.3	0.3	0.3	0.3	0.3	0.25	0.3
Stand.-Packg.	2000	2000	2000	2000	2000	2000	2000	2000	1000

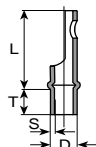
## Löthülsen nahtlos

## Douilles tubulaires

## Seamless soldering sleeves

**Bestellbeispiel:**  
**Exemple de commande:**  
**Example of order:**

**H12080222068**  
(H1.2 x 0.20 x 8.0 x 2.2 MS sn)



D mm	S mm	L mm	T mm	Stand.-Packg.		Artikel-Nr. Numéro d'article Part-No.
				2'000	5'000	
1.2	0.20	8.0	2.2		•	H1208022206( )
1.3	0.20	5.0	2.5		•	H1305025206( )
1.5	0.25	8.0	2.5		•	H1508025256( )
					•	H1508030306( )
1.6	0.20	6.0	3.0		•	H1606030206( )
					•	H1806530306( )
1.8	0.30	6.5	3.0		•	H2005025206( )
					•	H2006030256( )
2.0	0.20	5.0	2.5		•	H2008020306( )
					•	H2008025306( )
	0.25	6.0	3.0		•	H2008030306( )
					•	H2008035306( )
	0.30	8.0	2.0		•	H2017025306( )
					•	H2017045306( )
	0.30	8.0	2.5		•	H2508030306( )
					•	H2515010046( )
2.5	0.30	8.0	3.0		•	H3310035306( )
					•	
3.3	0.40	15.0	10.0	1000		
				1000		
	0.30	10.0	3.5	1000		

## Steckerstifte

## Fiches de goupille

## Seamless pins

Werkstoff:

MS = Messing

Oberflächenbehandlung: Code

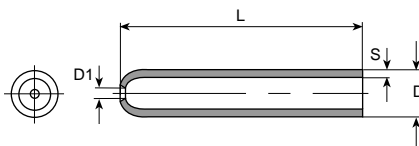
bl = blank (0)  
 ag = versilbert (1)  
 au = vergoldet (2)  
 ni = vernickelt (5)  
 sn = verzinkt (8)

**Bestellbeispiel:**

**Exemple de commande:**  
**Example of order:**

**S15100072065**

(S1.5 x 0.20 x 10.0 x 0.7 MS ni)



Andere Abmessungen auf Anfrage

Matière:

MS = laiton

Traitements de surface: Code

bl = brut (0)  
 ag = argenté (1)  
 au = doré (2)  
 ni = nickelé (5)  
 sn = étamé (8)

Autres dimensions sur demande

Material:

MS = brass

Surface-plating: Code

bl = clean (0)  
 ag = silver-plated (1)  
 au = gold-plated (2)  
 ni = nickel-plated (5)  
 sn = tin-plated (8)

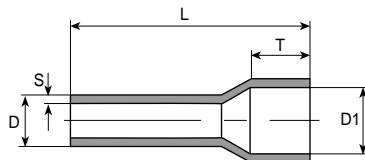
Further dimensions on request

D mm	S mm	L mm	D1 mm	Stand.-Packg.		Artikel-Nr. Numéro d'article Part-No.
				1'000	2'000	
1.5	0.20	10.0	0.7		•	<b>S1510007206( )</b>
	0.20	10.0	0.9		•	<b>S1510009206( )</b>
2.2	0.25	13.0	1.3		•	<b>S2213013256( )</b>
2.5	0.30	9.0	1.3		•	<b>S2509013306( )</b>
2.8	0.30	17.0	1.4		•	<b>S2817014306( )</b>
5.0	0.50	10.0	2.0		•	<b>S5010020506( )</b>
5.5	0.25	30.0	2.5		•	<b>S5530025256( )</b>
6.0	0.25	3.0	2.8		•	<b>S6003028256( )</b>
	0.50	10.0	2.5	500		<b>S6010025506( )</b>
9.0	0.30	93.0	6.7	100		<b>S9093067306( )</b>

## Hülsen einseitig aufgeweitet

## Douilles élargies d'un côté

## One side widened sleeves



Andere Abmessungen auf Anfrage

Autres dimensions sur demande

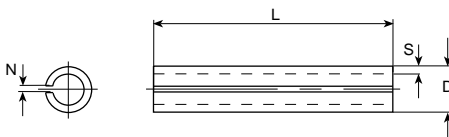
Further dimensions on request

D mm	S mm	L mm	T mm	D1 mm	Stand.-Packg.		Artikel-Nr. Numéro d'article Part-No.
					2'000	5'000	
1.0	0.20	6.0	3.0	1.0	•		<b>T1006030106( )</b>
1.5	0.20	15.0	4.0	1.7		•	<b>T1515040176( )</b>
4.0	0.40	9.5	3.8	4.9		•	<b>T4009538494( )</b>
5.1	0.30	9.4	3.8	4.9	2500		<b>T5109438493( )</b>

## Rohr mit Schlitz

## Tubes fendus

## Slitted tubes



Andere Abmessungen auf Anfrage

Autres dimensions sur demande

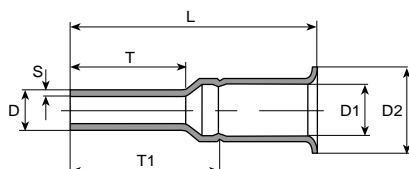
Further dimensions on request

D mm	S mm	L mm	N mm	Stand.-Packg.		Artikel-Nr. Numéro d'article Part-No.
				2'000	5'000	
2.0	0.30	7.0	1.0		•	<b>Y2007010306( )</b>
2.5	0.25	10.0	0.2	500		<b>Y2510002256( )</b>
3.0	0.50	8.0	0.2		•	<b>Y3008002506( )</b>
	0.50	8.0	1.0		•	<b>Y3008010506( )</b>
3.8	0.30	9.0	0.8	1000		<b>Y3809008306( )</b>
4.5	0.25	17.5	0.5	500		<b>Y4517505256( )</b>
5.0	0.50	13.0	0.2	500		<b>Y5013002506( )</b>
9.0	0.50	14.0	1.5	200		<b>Y9014015506( )</b>

## Endhülsen für Fiberoptic

## Embouts de fils pour fibre optic

## End-sleeves for fibre optic



D mm	S mm	L mm	T mm	T1 mm	D1 mm	D2 mm	Stand.-Packg.	Artikel-Nr. Numéro d'article Part-No.
1.8	0.30	15.0	5.0	7.5	2.3	4.0	500	<b>1234.6( )</b>
3.0	0.30	15.0	5.0	7.5	3.8	5.5	500	<b>1235.6( )</b>



# Vogt Verbindungstechnik

## Steckerstifte

## Fiches de goupille

## Seamless pins

Werkstoff:

MS = Messing

Oberflächenbehandlung: Code

bl = blank (0)  
 ag = versilbert (1)  
 au = vergoldet (2)  
 ni = vernickelt (5)  
 sn = verzinkt (8)

**Bestellbeispiel:**  
**Exemple de commande:**  
**Example of order:**

**V10040452061**

(V1.0 x 0.2 x 4.0 x 4.5 MS ag)

Matière:

MS = laiton

Traitements de surface: Code

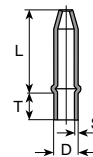
bl = brut (0)  
 ag = argenté (1)  
 au = doré (2)  
 ni = nickelé (5)  
 sn = étamé (8)

Material:

MS = brass

Surface-plating: Code

bl = clean (0)  
 ag = silver-plated (1)  
 au = gold-plated (2)  
 ni = nickel-plated (5)  
 sn = tin-plated (8)



øD mm	S mm	L mm	T mm	Stand.-Packg.		Artikel-Nr. Numéro d'article Part-No.	øD mm	S mm	L mm	T mm	Stand.-Packg.		Artikel-Nr. Numéro d'article Part-No.	
				2'000	5'000						2'000	5'000		
<b>1</b>	0.2	4	4.5		•	<b>V1004045206( )</b>	<b>2.3</b>	0.3	11.2	4.2		•	<b>V2311242306( )</b>	
	0.2	4.5	1		•	<b>V1004510206( )</b>		0.3	11.2	5		•	<b>V2311250306( )</b>	
	0.2	5	1		•	<b>V1005010206( )</b>		<b>2.35</b>	0.25	11	9		•	<b>V2351190256( )</b>
	0.2	6	2.5		•	<b>V1006025206( )</b>			0.3	14	9.5		•	<b>V2351495306( )</b>
	0.2	6	3		•	<b>V1006030206( )</b>		<b>2.4</b>	0.3	8	4		•	<b>V2408040306( )</b>
	0.2	8	1.5		•	<b>V1008015206( )</b>			0.3	10	3		•	<b>V2410030306( )</b>
	0.2	8	2.5		•	<b>V1008025206( )</b>			0.3	11	4		•	<b>V2411040306( )</b>
	0.2	8	3		•	<b>V1008030206( )</b>			0.3	11	4		•	<b>V2411052306( )</b>
	0.2	9.5	1		•	<b>V1009510206( )</b>			0.3	11	5.2		•	<b>V2411052306( )</b>
	0.2	9.5	2		•	<b>V1009520206( )</b>			0.25	12	2		•	<b>V2412020256( )</b>
	0.2	9.8	5.7		•	<b>V1009857206( )</b>			0.25	12.5	1.5		•	<b>V2412515256( )</b>
	0.2	11	2.5		•	<b>V1011025206( )</b>			0.3	13.7	2.5		•	<b>V2413725306( )</b>
	0.2	14	1		•	<b>V1014010206( )</b>		0.25	14	2		•	<b>V2414020256( )</b>	
	0.2	15	2		•	<b>V1015020206( )</b>		<b>2.5</b>	0.25	4.1	3.5		•	<b>V2504135256( )</b>
	0.2	16.5	2.5		•	<b>V1016525206( )</b>			0.3	11.2	4.2		•	<b>V2511242306( )</b>
	0.2	18	6		•	<b>V1018060206( )</b>		0.3	15.7	2.3		•	<b>V2515723306( )</b>	
<b>1.2</b>	0.2	9	2		•	<b>V1209020206( )</b>	<b>2.8</b>	0.3	14.5	2.5	1000		<b>V2814525306( )</b>	
<b>1.5</b>	0.2	7.5	2.8		•	<b>V1507528206( )</b>		0.4	20	4.5	1000		<b>V2820045406( )</b>	
	0.2	8	1.5		•	<b>V1508015206( )</b>	<b>3</b>	0.3	20	3	1000		<b>V3020030306( )</b>	
	0.2	9	2.7		•	<b>V1509027206( )</b>		<b>3.2</b>	0.3	14.5	2.5	1000		<b>V3214525306( )</b>
	0.2	9.5	1.5		•	<b>V1509515206( )</b>			0.3	20	5	1000		<b>V3220050306( )</b>
	0.2	12	2.7		•	<b>V1512027206( )</b>	<b>4</b>	0.4	14.5	2.5	1000		<b>V4014525406( )</b>	
0.3	15	3		•	<b>V1515030306( )</b>	0.4		18	5	1000		<b>V4018050406( )</b>		
<b>1.6</b>	0.2	7.6	2.2		•	<b>V1607622206( )</b>		0.4	19	34	500		<b>V4019034046( )</b>	
	0.25	10	2.5		•	<b>V1610025256( )</b>		0.4	19	66.5	500		<b>V4019066546( )</b>	
<b>2</b>	0.25	5	2		•	<b>V2005020256( )</b>		0.3	20	3	500		<b>V4020003036( )</b>	
	0.3	9	2		•	<b>V2009020306( )</b>		0.5	20	3	500		<b>V4020003056( )</b>	
	0.2	9.5	2.5		•	<b>V2009525206( )</b>	0.3	20	3	500		<b>V4020004036( )</b>		
	0.3	11	3.5		•	<b>V2011035306( )</b>	0.5	20	4	500		<b>V4020004036( )</b>		
	0.3	12	8		•	<b>V2012080306( )</b>	0.5	20	7.5	500		<b>V4020007556( )</b>		
0.25	18.5	6		•	<b>V2018560256( )</b>	0.3	20	25.2	500		<b>V4020025236( )</b>			
							0.4	20	47.5	500		<b>V4020047546( )</b>		

Andere Abmessungen auf Anfrage

Autres dimensions sur demande

Further dimensions on request