

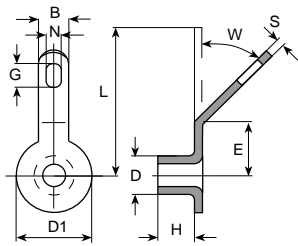


Vogt Verbindungstechnik

Nietlötösen

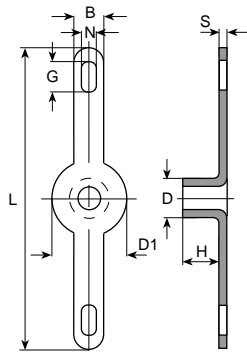
Cosses à river

Eyelet terminals



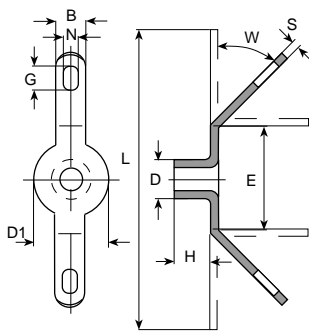
45° + 75°

D mm	H mm	W	L mm	E mm	D1 mm	B mm	N mm	G mm	S mm	Werkstoff Matière Material	Stand- Packg.	DIN 41496	Artikel-Nr. Numéro d'article Part-No.
1.5	2.8	75°	8.3	2.5	2.5	2.5	1.1	1.6	0.25	MS	5000	V1-3 V1-4	1822.6()
	2.0	75°	8.3	2.5	2.5	2.5	1.1	1.6	0.25	MS	5000		1825.6()
2.0	3.0	45°	8.0	2.5	4.0	2.5	1.2	2.2	0.3	MS	5000		222445.6()
	3.5	45°	8.0	2.5	4.0	2.5	1.2	2.2	0.3	MS	5000		1824.6()
	2.6	45°	10.0	3.2	4.5	4.0	1.6	3.2	0.4	MS	2000		220645.6()
3.0	3.0	45°	12.0	4.3	5.5	3.0	1.7	3.2	0.5	MS	2000		223445.6()
	4.0	45°	12.0	4.3	5.5	3.0	1.7	3.2	0.5	MS	2000		224045.6()

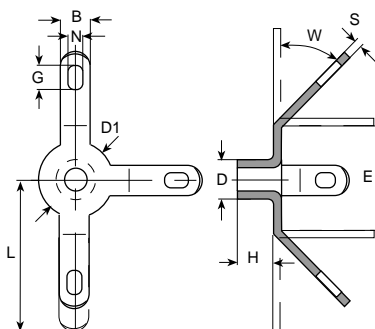


D mm	H mm	L mm	D1 mm	B mm	N mm	G mm	S mm	Werkstoff Matière Material	Stand- Packg.	DIN 41496	Artikel-Nr. Numéro d'article Part-No.
2.0	2.5	14.0	4.0	2.5	1.2	2.2	0.3	MS	5000	U2-3	2610.6()
	3.5	14.0	4.0	2.5	1.2	2.2	0.3	MS	5000		1922.6()
2.5	2.7	12.0	3.0	3.0	1.2	2.0	0.3	MS	5000		2612.6()
	3.0	20.0	5.0	2.5	1.2	2.2	0.3	MS	5000		1924.6()
2.6	3.5	20.0	4.5	4.0	1.6	3.4	0.4	MS	2000		2615.6()
2.7	3.0	18.2	5.5	3.0	1.2	2.2	0.4	MS	2000		2602.6()
2.8	2.6	18.0	5.5	3.0	1.2	2.0	0.3	MS	2000		2600.6()
3.0	3.0	24.0	5.5	3.0	1.7	3.2	0.5	MS	1000		2620.6()
	3.2	18.4	5.5	3.0	1.5	2.5	0.35	MS	5000		2627.6()
	3.4	18.4	5.5	3.0	1.3	2.5	0.3	MS	2000		2601.6()
	3.5	20.0	6.0	3.0	1.7	3.2	0.3	MS	2000		2625.6()
4.0	18.0	4.0	3.0	1.7	3.2	0.3	MS	2000	2629.6()		
4.0	18.0	5.5	3.0	1.7	3.2	0.4	MS	2000	2623.6()		
4.0	24.0	5.5	3.0	1.7	3.2	0.5	MS	1000	2631.6()		
3.5	4.0	21.0	5.5	3.0	1.7	2.5	0.5	MS	2000	2607.6()	
3.8	4.0	21.2	5.5	2.6	1.4	2.8	0.5	MS	2000	2605.6()	
4.0	4.5	22.0	5.5	3.0	1.5	2.5	0.4	MS	1000	2606.6()	

45° + 90°



D mm	H mm	W	L mm	E mm	D1 mm	B mm	N mm	G mm	S mm	Werkstoff Matière Material	Stand- Packg.	DIN 41496	Artikel-Nr. Numéro d'article Part-No.
2.0	2.5	90°	14.0	5.0	4.0	2.5	1.2	2.2	0.3	MS	5000	V2-3 V2-4	261090.6()
	2.8	45°	10.5	2.5	2.5	2.5	1.0	1.5	0.25	MS	5000		1921.6()
	2.8	90°	10.5	2.5	2.5	2.5	1.0	1.5	0.25	MS	5000		1942.6()
	3.5	45°	14.0	5.0	4.0	2.5	1.2	2.2	0.3	MS	5000		192245.6()
2.5	3.5	90°	14.0	5.0	4.0	2.5	1.2	2.2	0.3	MS	5000		1944.6()
	3.0	45°	20.0	6.4	5.0	2.5	1.2	2.2	0.3	MS	2000		1925.6()
	3.0	90°	20.0	6.4	5.0	2.5	1.2	2.2	0.3	MS	2000		1945.6()
3.0	3.0	45°	24.0	8.6	5.5	3.0	1.7	3.2	0.5	MS	2000		262045.6()
	3.0	90°	24.0	8.6	5.5	3.0	1.7	3.2	0.5	MS	1000		262090.6()
	3.5	90°	15.0	5.0	5.0	3.0	1.4	2.5	0.3	MS	2000		261890.6()
	3.5	90°	20.0	6.4	6.0	3.0	1.7	3.2	0.3	MS	1000		262590.6()
	4.0	45°	24.0	8.6	5.5	3.0	1.7	3.2	0.5	MS	1000		263145.6()
	4.0	90°	24.0	8.6	5.5	3.0	1.7	3.2	0.5	MS	1000	263190.6()	



45° + 90°

D mm	H mm	W	L mm	E mm	D1 mm	B mm	N mm	G mm	S mm	Werkstoff Matière Material	Stand- Packg.	DIN 41496	Artikel-Nr. Numéro d'article Part-No.
3.0	3.0	-	12.0	-	5.5	3.0	1.7	3.2	0.5	MS	1000	U3-3	2832.6()
	3.0	45°	12.0	8.6	5.5	3.0	1.7	3.2	0.5	MS	2000	V3-3	283245.6()
	3.0	90°	12.0	8.6	5.5	3.0	1.7	3.2	0.5	MS	1000		283290.6()
	4.0	-	12.0	-	5.5	3.0	1.7	3.2	0.5	MS	1000	U3-4	2836.6()



4-kt Nietlötösen

Cosses à rivet carré

Squared eyelet terminals

Werkstoff:

MS = Messing

Oberflächenbehandlung: Code

bl = blank (0)
ag = versilbert (1)
au = vergoldet (2)
ni = vernickelt (5)
sn = verzinkt (8)

Matière:

MS = laiton

Traitements de surface: Code

bl = brut (0)
ag = argenté (1)
au = doré (2)
ni = nickelé (5)
sn = étamé (8)

Material:

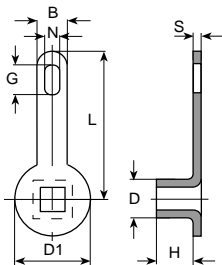
MS = brass

Surface-plating: Code

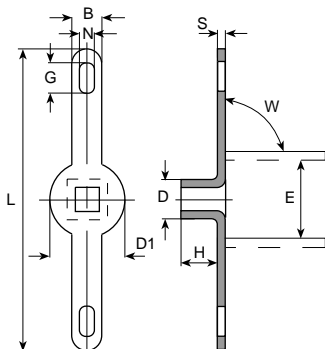
bl = clean (0)
ag = silver-plated (1)
au = gold-plated (2)
ni = nickel-plated (5)
sn = tin-plated (8)

Bestellbeispiel:

Exemple de commande: **2305.68**
Example of order: (2305 MS sn)



D mm	H mm	L mm	D1 mm	B mm	N mm	G mm	S mm	Werkstoff Matière Material	Stand.- Packg.	Artikel-Nr. Numéro d'article Part-No.
2.0	3.0	8.0	4.0	2.5	1.2	2.2	0.3	MS	5000	2305.6 ()
2.6	3.5	10.0	4.5	4.0	1.6	3.2	0.4	MS	2000	2304.6 ()
3.0	3.0	12.0	5.5	3.0	1.7	3.2	0.5	MS	2000	2308.6 ()
	4.0	12.0	5.5	3.0	1.7	3.2	0.5	MS	2000	2309.6 ()



90°												
D mm	H mm	W	L mm	E mm	D1 mm	B mm	N mm	G mm	S mm	Werkstoff Matière Material	Stand.- Packg.	Artikel-Nr. Numéro d'article Part-No.
3.0	3.0	-	24.0	-	5.5	3.0	1.7	3.2	0.5	MS	2000	2704.6 ()
	3.0	90°	25.0	8.6	5.5	3.0	1.7	3.2	0.5	MS	2000	270490.6 ()
	4.0	-	24.0	-	5.5	3.0	1.7	3.2	0.5	MS	2000	2708.6 ()

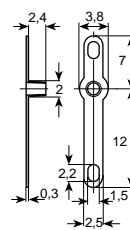
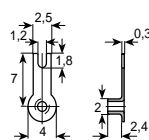
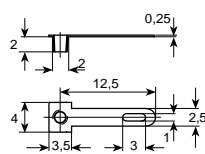
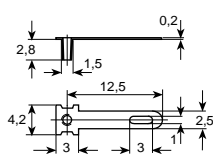


Vogt Verbindungstechnik

Nietlötösen Spezialausführung

Cosses à river exécution spéciale

Special eyelet terminals



Artikel-Nr.
 Numéro d'article
 Part-No. →

2362.6() MS

2364.6() MS

2221.6() MS

2805.6() MS

D 1.5
 H 2.8
 S 0.2

D 2.0
 H 2.0
 S 0.25

D 2.0
 H 2.0
 S 0.3

D 2.0
 H 2.4
 S 0.3

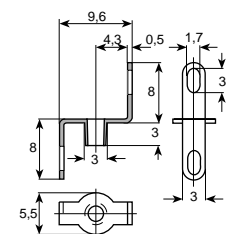
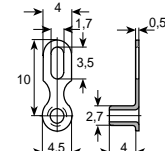
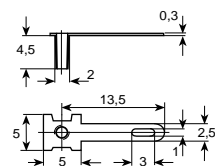
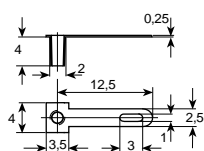
Stand.-Packg.

5000

5000

5000

2000



Artikel-Nr.
 Numéro d'article
 Part-No. →

2366.6() MS

2370.6() MS

2229.6() MS

2620B.6() MS

D 2.0
 H 4.0
 S 0.25

D 2.0
 H 4.5
 S 0.3

D 2.7
 H 4.0
 S 0.5

D 3.0
 H 3.0
 S 0.5

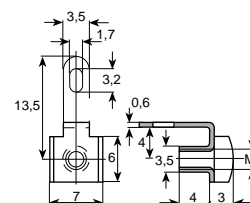
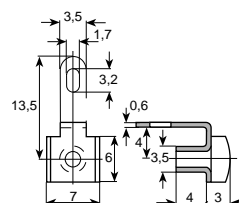
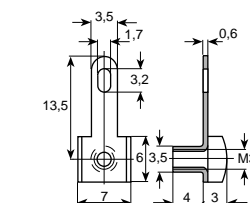
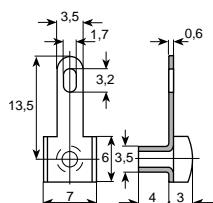
Stand.-Packg.

5000

2000

5000

1000



Artikel-Nr.
 Numéro d'article
 Part-No. →

2380.6() MS

2380M3.6() MS

2380X.6() MS

2380XM3.6() MS

D 3.5
 H 4.0
 S 0.6

D 3.5/M3
 H 4.0
 S 0.6

D 3.5
 H 4.0
 S 0.6

D 3.5/M3
 H 4.0
 S 0.6

Stand.-Packg.

1000

1000

1000

1000