



Lötösen

Cosses à souder

Soldering tags

Werkstoff:

BZ = Bronze
MS = Messing
NS = Neusilber
ST = Stahl

Matière:

BZ = bronze
MS = laiton
NS = maillechort
ST = acier

Material:

BZ = bronze
MS = brass
NS = german silver
ST = steel

Oberflächenbehandlung: Code

bl = blank (0)
ag = versilbert (1)
au = vergoldet (2)
ni = vernickelt (5)
sn = verzinkt (8)

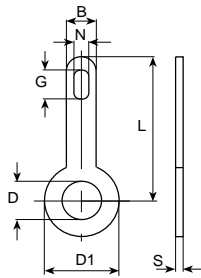
Traitements de surface: Code

bl = brut (0)
ag = argenté (1)
au = doré (2)
ni = nickelé (5)
sn = étamé (8)

Surface-plating: Code

bl = clean (0)
ag = silver-plated (1)
au = gold-plated (2)
ni = nickel-plated (5)
sn = tin-plated (8)

Bestellbeispiel:
Exemple de commande: **2021.68**
Example of order: (2021 MS sn)



D mm	L mm	D1 mm	B mm	N mm	G mm	S mm	Werkstoff Matière Material	Stand- Packg.	DIN 41496	Artikel-Nr. Numéro d'article Part-No.
1.2	9.0	5.5	3.0	1.7	3.2	0.3	MS	5000		2003S.6()
1.6	5.0	3.0	2.0	0.7	1.3	0.3	MS	5000		2021.6()
	8.0	3.0	2.0	0.8	2.5	0.3	MS	5000		2022.6()
2.2	6.0	5.5	3.0	1.0	1.8	0.3	MS	5000		2025.6()
	9.0	4.5	3.0	1.7	3.2	0.4	MS	5000	A1-2x 9	2002.6()
	9.0	5.5	3.0	1.7	3.2	0.3	MS	5000		2027.6()
	12.0	4.5	3.0	1.7	3.2	0.4	MS	5000	A1-2x12	2005.6()
	12.0	5.5	3.0	1.7	3.2	0.3	MS	5000		2029.6()
2.6	9.0	4.5	3.0	1.7	3.2	0.3	MS	5000		2035.6()
	12.0	4.5	3.0	1.7	3.2	0.4	MS	5000		2036.6()
2.7	20.0	5.5	2.5	1.2	2.2	0.4	MS	2000		2037.6()
2.8	9.0	5.5	3.0	1.7	3.2	0.3	MS	5000		2038.6()
3.2	9.0	5.5	3.0	1.7	3.2	0.3	MS	5000		2003.6()
	12.0	5.5	3.0	1.7	3.2	0.3	MS	5000		20060.3.6()
	12.0	5.5	3.0	1.7	3.2	0.5	MS	5000	A1-3x12	2006.6()
	12.0	6.5	3.0	1.7	3.2	0.3	MS	5000		2055.6()
	18.0	5.5	3.0	1.7	3.2	0.5	MS	2000	A1-3x18	2008.6()
	18.0	6.5	3.0	1.7	3.2	0.3	MS	5000		201303.6()
	18.0	6.5	3.0	1.7	3.2	0.5	MS	1000		2013.6()
	24.0	7.0	3.0	1.7	3.2	0.5	MS	1000		2058.6()
	46.5	7.0	3.0	1.7	3.2	0.3	MS	1000		205903.6()
	46.5	7.0	3.0	1.7	3.2	0.5	MS	500		2059.6()
3.5	27.0	25.0	2.8	1.7	3.2	0.5	MS	1000		2031.6()
3.7	9.0	6.0	3.0	1.7	3.2	0.3	MS	5000		2060.6()
	12.0	6.5	3.0	1.7	3.2	0.3	MS	5000		2061.6()
	18.0	6.5	3.0	1.7	3.2	0.3	MS	2000		2062.6()
4.2	14.0	10.0	4.2	1.5	3.2	0.3	MS	2000		2007B.6()
	21.0	6.3	3.0	1.5	2.7	0.3	ST	2000		2077.9()
4.3	9.0	6.0	3.0	1.7	3.2	0.3	MS	5000		2004.6()
	12.0	6.5	3.0	1.7	3.2	0.5	MS	5000	A1-4x12	2007.6()
	12.0	6.5	3.0	1.7	3.2	0.5	NS	2000		2007.7()
	18.0	6.5	3.0	1.7	3.2	0.5	MS	2000	A1-4x18	2009.6()
	24.0	7.0	3.0	1.7	3.2	0.3	MS	2000		201503.6()
	24.0	7.0	3.0	1.7	3.2	0.5	MS	1000		2015.6()
	46.5	7.0	3.0	1.7	3.2	0.5	MS	500		2016.6()
5.3	12.0	10.0	4.0	1.7	3.2	0.3	MS	2000		2064.6()
	20.0	10.0	4.0	2.0	4.0	0.5	MS	1000		2065.6()
6.4	12.0	10.0	4.0	1.7	3.2	0.3	MS	2000		2067.6()
	20.0	10.0	4.0	2.0	4.0	0.5	MS	1000		2068.6()
7.3	12.0	10.0	4.0	1.7	3.2	0.3	MS	2000		2069.6()
8.0	12.0	10.0	4.0	1.7	3.2	0.3	MS	2000		2088.6()
9.1	16.0	13.0	4.0	1.5	4.0	0.5	MS	1000		2052.6()
11.2	16.0	15.0	4.0	1.5	4.0	0.5	MS	1000		2054.6()

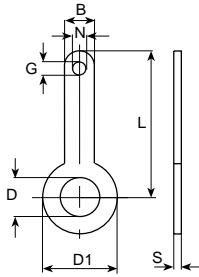


Vogt Verbindungstechnik

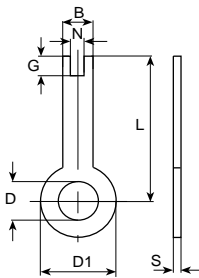
Lötösen

Cosses à souder

Soldering tags

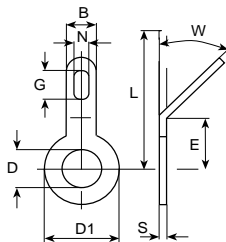


D mm	L mm	D1 mm	B mm	N mm	G mm	S mm	Werkstoff Matière Material	Stand.- Packg.		Artikel-Nr. Numéro d'article Part-No.
2.7	6.5	5.0	3.0	∅ 1.6	-	0.4	MS	5000		2000.6()
3.2	6.5	5.0	3.0	∅ 1.8	-	0.3	MS	5000		2014.6()
	6.5	5.0	3.2	∅ 1.6	-	0.3	MS	5000		2001.6()
3.6	6.0	6.0	3.2	∅ 1.6	-	0.3	MS	2000		2020.6()
4.15	10.7	5.5	3.0	∅ 1.15	-	0.2	BZ	1000		2018.2()
4.3	11.0	8.0	6.0	∅ 3.0	-	1.0	MS	1000		2026.6()
5.5	18.0	9.0	4.0	∅ 1.0	-	0.4	MS	1000		2010.6()
6.4	23.0	10.0	4.0	∅ 1.0	-	0.4	MS	1000		2012.6()
8.2	14.0	12.0	4.0	∅ 1.6	-	0.3	MS	1000		2053.6()
9.6	14.0	12.0	4.0	∅ 1.7	-	0.5	MS	1000		2051.6()
18.0	27.5	25.0	2.8	∅ 1.0	-	0.5	MS	200		2083.6()
19.0	36.0	36.0	5.0	∅ 2.5	-	0.5	MS	1000		2032.6()



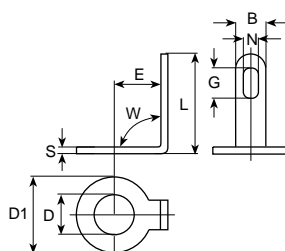
D mm	L mm	D1 mm	B mm	N mm	G mm	S mm	Werkstoff Matière Material	Stand.- Packg.		Artikel-Nr. Numéro d'article Part-No.
3.2	29.0	5.5	1.5	-	-	0.2	BZ	2000		205602.2()
	29.0	5.5	1.5	-	-	0.5	MS	2000		2056.6()
	36.0	5.5	1.5	-	-	0.5	MS	1000		2057.6()
5.0	18.0	8.0	4.0	-	-	0.3	MS	2000		2063.6()
5.5	21.0	13.0	5.0	2.0	3.0	0.8	MS	1000		2066.6()

30° + 45° + 60°



D mm	W	L mm	E mm	D1 mm	B mm	N mm	G mm	S mm	Werkstoff Matière Material	Stand.- Packg.	DIN 41496	Artikel-Nr. Numéro d'article Part-No.
1.6	60°	13.0	7.0	5.0	3.0	1.6	3.0	0.3	MS	5000		202360.6()
3.15	30°	9.0	3.7	6.0	3.0	∅ 1.8	-	0.5	MS	5000		204030.6()
	45°	9.0	3.7	6.0	3.0	1.7	3.2	0.5	MS	5000		204145.6()
	45°	9.0	3.2	5.5	3.0	1.7	3.2	0.3	MS	5000		200345.6()
3.2	45°	12.0	4.3	5.5	3.0	1.7	3.2	0.3	MS	5000		20060345.6()
	45°	12.0	4.3	5.5	3.0	1.7	3.2	0.5	MS	5000	B1-3x12	200645.6()
4.3	45°	12.0	5.5	6.5	3.0	1.7	3.2	0.5	MS	2000	B1-4x12	200745.6()

90°



D mm	W	L mm	E mm	D1 mm	B mm	N mm	G mm	S mm	Werkstoff Matière Material	Stand.- Packg.		Artikel-Nr. Numéro d'article Part-No.
2.2	90°	6.0	3.2	4.5	3.0	1.7	3.2	0.4	MS	5000		200290.6()
3.15	90°	5.5	3.7	6.0	3.0	∅ 1.8	-	0.5	MS	5000		204090.6()
3.2	90°	6.0	3.2	5.5	3.0	1.7	3.2	0.3	MS	5000		200390.6()
	90°	8.0	4.3	5.5	3.0	1.7	3.2	0.3	MS	5000		20060390.6()
	90°	8.0	4.3	5.5	3.0	1.7	3.2	0.5	MS	5000		200690.6()
	90°	7.0	5.5	6.5	3.0	1.7	3.2	0.5	MS	2000		200790.6()
	90°	7.0	5.5	6.5	3.0	1.7	3.2	0.5	MS	2000		200790.6()
	90°	7.0	5.5	6.5	3.0	1.7	3.2	0.5	NS	2000		200790.7()



Lötösen

Cosses à souder

Soldering tags

Werkstoff:

MS = Messing

Oberflächenbehandlung: Code

bl = blank (0)
 ag = versilbert (1)
 au = vergoldet (2)
 ni = vernickelt (5)
 sn = verzinkt (8)

Matière:

MS = laiton

Traitements de surface: Code

bl = brut (0)
 ag = argenté (1)
 au = doré (2)
 ni = nickelé (5)
 sn = étamé (8)

Material:

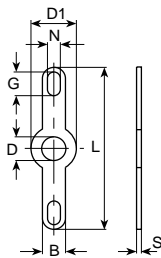
MS = brass

Surface-plating: Code

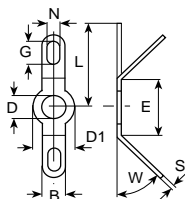
bl = clean (0)
 ag = silver-plated (1)
 au = gold-plated (2)
 ni = nickel-plated (5)
 sn = tin-plated (8)

Bestellbeispiel:

Exemple de commande: **2500.61**
Example of order: (2500 MS ag)

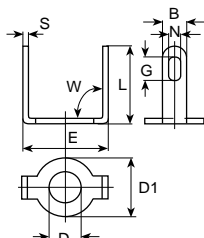


D mm	L mm	D1 mm	B mm	N mm	G mm	S mm	Werkstoff Matière Material	Stand.- Packg.	DIN 41496	Artikel-Nr. Numéro d'article Part-No.
2.2	18.0	4.5	3.0	1.7	3.2	0.4	MS	5000	A2-2	2500.6()
	22.0	6.0	3.0	1.7	3.2	0.3	MS	5000		2510.6()
2.6	18.5	5.5	3.0	1.4	2.5	0.3	MS	5000	A2-3	2501.6()
3.1	18.5	6.0	3.0	1.5	3.0	0.4	MS	5000		2521.6()
3.2	18.0	5.9	3.0	1.7	3.2	0.3	MS	5000		2502.6()
	22.0	6.0	3.0	1.7	3.2	0.3	MS	5000		2512.6()
	24.0	5.5	3.0	1.7	3.2	0.5	MS	2000		2504.6()
	26.0	6.3	3.0	1.5	2.5	0.4	MS	2000		2506.6()
	32.4	6.0	3.0	1.5	2.5	0.3	MS	2000	2508.6()	
3.7	22.0	6.0	3.0	1.7	3.2	0.3	MS	5000	A2-4	2514.6()
4.2	18.0	5.5	2.6	1.5	3.0	0.3	MS	5000		2503.6()
4.3	22.0	6.0	3.0	1.7	3.2	0.3	MS	5000		2516.6()
	24.0	6.5	3.0	1.7	3.2	0.5	MS	2000		2505.6()
	32.4	6.0	3.0	1.5	3.0	0.3	MS	2000		2509.6()
5.3	30.0	10.0	3.0	1.7	3.2	0.5	MS	2000		2518.6()
6.4	30.0	10.0	3.0	1.7	3.2	0.5	MS	2000	2519.6()	
7.3	30.0	10.0	3.0	1.7	3.2	0.5	MS	2000	2520.6()	



45°

D mm	W	L mm	E mm	D1 mm	B mm	N mm	G mm	S mm	Werkstoff Matière Material	Stand.- Packg.	Artikel-Nr. Numéro d'article Part-No.
3.1	45°	9.2	5.7	6.0	3.0	1.5	3.0	0.4	MS	5000	252145.6()
3.2	45°	12.0	7.5	5.5	3.0	1.7	3.2	0.5	MS	2000	250445.6()



90°

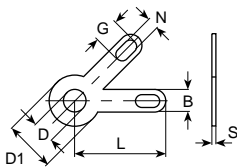
D mm	W	L mm	E mm	D1 mm	B mm	N mm	G mm	S mm	Werkstoff Matière Material	Stand.- Packg.	Artikel-Nr. Numéro d'article Part-No.
2.2	90°	6.0	7.2	4.5	3.0	1.7	3.2	0.4	MS	5000	250790.6()
3.1	90°	6.8	6.5	6.0	3.0	1.5	3.0	0.4	MS	5000	252190.6()
3.2	90°	6.0	7.5	5.9	3.0	1.7	3.2	0.3	MS	5000	250290.6()



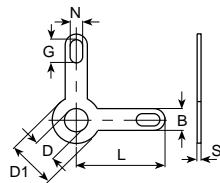
Lötösen

Cosses à souder

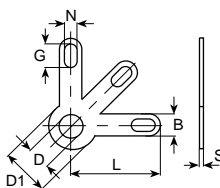
Soldering tags



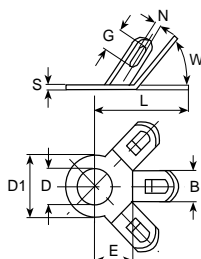
D mm	L mm	D1 mm	B mm	N mm	G mm	S mm	Werkstoff Matière Material	Stand.- Packg.	Artikel-Nr. Numéro d'article Part-No.
2.2	12.0	6.5	3.0	1.7	3.2	0.3	MS	2000	2550.6()
3.2	12.0	6.5	3.0	1.7	3.2	0.3	MS	2000	2556.6()
4.3	12.0	6.5	3.0	1.7	3.2	0.3	MS	2000	2568.6()
6.4	12.0	12.0	4.0	1.7	3.2	0.3	MS	1000	2594.6()



D mm	L mm	D1 mm	B mm	N mm	G mm	S mm	Werkstoff Matière Material	Stand.- Packg.	Artikel-Nr. Numéro d'article Part-No.
3.2	12.0	6.5	3.0	1.7	3.2	0.3	MS	2000	2558.6()
4.3	12.0	6.5	3.0	1.7	3.2	0.3	MS	2000	2570.6()



D mm	L mm	D1 mm	B mm	N mm	G mm	S mm	Werkstoff Matière Material	Stand.- Packg.	DIN 41496	Artikel-Nr. Numéro d'article Part-No.
2.2	9.0	4.5	3.0	1.7	3.2	0.4	MS	5000	A3-2x9	2552.6()
	12.0	4.5	3.0	1.7	3.2	0.4	MS	2000	A3-2x12	2554.6()
3.2	12.0	6.5	3.0	1.7	3.2	0.3	MS	2000		2560.6()
	12.0	5.5	3.0	1.7	3.2	0.5	MS	2000	A3-3x12	2562.6()
	18.0	5.5	3.0	1.7	3.2	0.5	MS	1000	A3-3x18	2564.6()
3.7	12.0	6.5	3.0	1.7	3.2	0.3	MS	2000		2566.6()
	12.0	6.5	3.0	1.7	3.2	0.3	MS	2000		2572.6()
4.3	12.0	6.5	3.0	1.7	3.2	0.5	MS	1000	A3-4x12	2574.6()
	18.0	6.5	3.0	1.7	3.2	0.5	MS	1000	A3-4x18	2576.6()



45°

D mm	W	L mm	E mm	D1 mm	B mm	N mm	G mm	S mm	Werkstoff Matière Material	Stand.- Packg.	Artikel-Nr. Numéro d'article Part-No.
3.2	45°	12.0	7.0	5.5	3.0	1.7	3.2	0.5	MS	2000	256245.6()
4.3	45°	12.0	8.5	6.5	3.0	1.7	3.2	0.5	MS	1000	257445.6()



Lötösen

Cosses à souder

Soldering tags

Werkstoff:

MS = Messing

Oberflächenbehandlung: Code

bl = blank (0)
ag = versilbert (1)
au = vergoldet (2)
ni = vernickelt (5)
sn = verzinkt (8)

Matière:

MS = laiton

Traitements de surface: Code

bl = brut (0)
ag = argenté (1)
au = doré (2)
ni = nickélé (5)
sn = étamé (8)

Material:

MS = brass

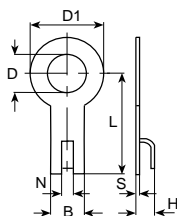
Surface-plating: Code

bl = clean (0)
ag = silver-plated (1)
au = gold-plated (2)
ni = nickel-plated (5)
sn = tin-plated (8)

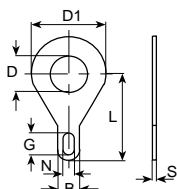
Bestellbeispiel:

Exemple de commande: **2100.61**

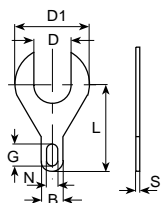
Example of order: (2100 MS ag)



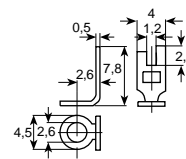
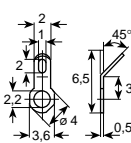
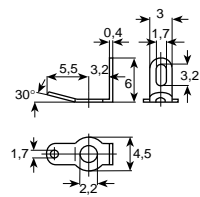
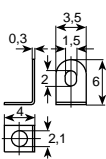
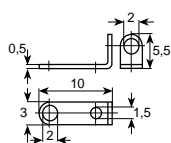
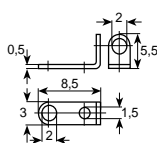
D mm	L mm	D1 mm	B mm	N mm	H mm	S mm	Werkstoff Matière Material	Stand.- Packg.	Artikel-Nr. Numéro d'article Part-No.
3.2	10.0	6.0	4.5	1.5	2.5	0.5	MS	2000	2100.6()
4.3	12.0	8.0	4.5	1.3	2.5	0.5	MS	2000	2101.6()
5.3	14.0	10.0	4.5	1.4	2.75	0.5	MS	2000	2102.6()
6.4	14.0	10.0	4.8	1.5	2.0	0.3	MS	2000	2103.6()
8.5	16.0	15.0	5.0	1.5	2.5	0.5	MS	1000	2103A.6()
10.5	16.0	15.2	5.0	1.5	2.5	0.5	MS	1000	2104.6()



D mm	L mm	D1 mm	B mm	N mm	G mm	S mm	Werkstoff Matière Material	Stand.- Packg.	DIN 46215	Artikel-Nr. Numéro d'article Part-No.
2.2	6.5	4.5	2.0	∅ 1.0	-	0.4	MS	5000	2 DIN	2120.6()
3.2	10.0	6.0	3.0	1.5	3.0	0.5	MS	5000	3 DIN	2124.6()
4.3	12.0	10.0	3.0	1.5	3.0	0.5	MS	2000	4 DIN	2128.6()
5.3	13.5	12.0	4.0	1.5	3.0	0.8	MS	1000	5 DIN	2132.6()
6.4	15.0	14.0	4.0	1.5	3.0	0.8	MS	1000	6 DIN	2136.6()



D mm	L mm	D1 mm	B mm	N mm	G mm	S mm	Werkstoff Matière Material	Stand.- Packg.	DIN 46216	Artikel-Nr. Numéro d'article Part-No.
2.2	6.5	4.5	2.0	∅ 1.0	-	0.4	MS	5000	2 DIN	2121.6()
3.2	10.0	6.0	3.0	1.5	3.0	0.5	MS	5000	3 DIN	2125.6()
4.3	12.0	10.0	3.0	1.5	3.0	0.5	MS	2000	4 DIN	2129.6()
5.3	13.5	12.0	4.0	1.5	3.0	0.8	MS	1000	5 DIN	2133.6()
6.4	15.0	14.0	4.0	1.5	3.0	0.8	MS	1000	6 DIN	2137.6()



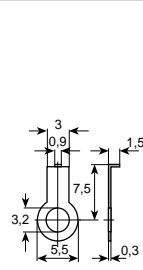
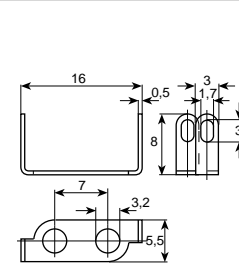
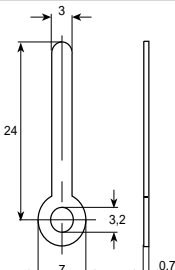
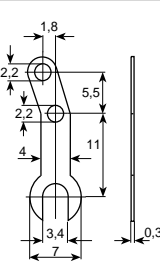
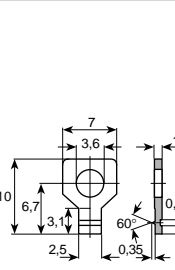
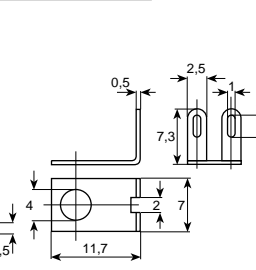
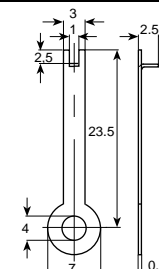
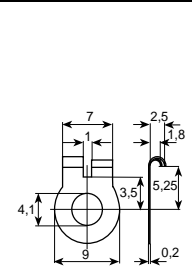
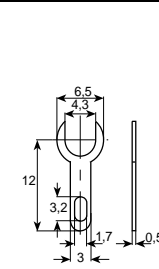
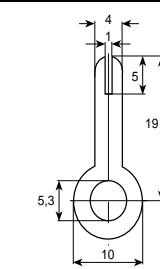
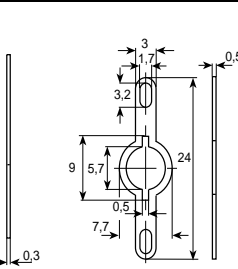
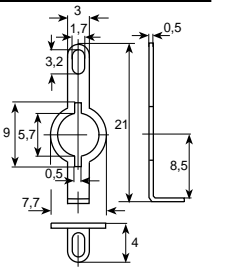
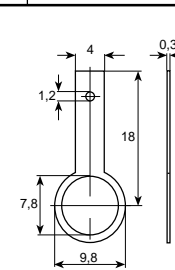
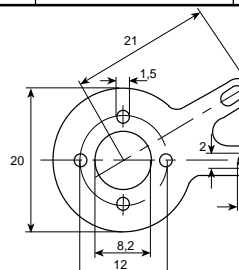
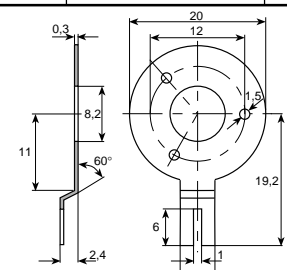
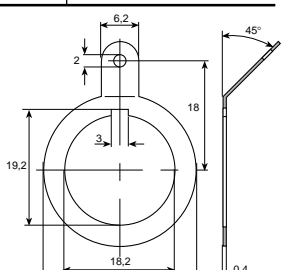
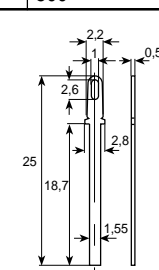
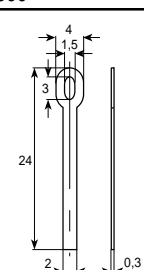
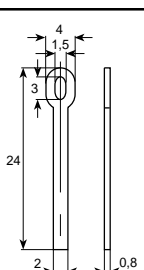
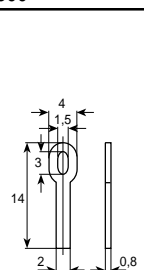
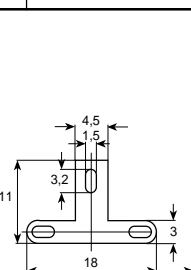
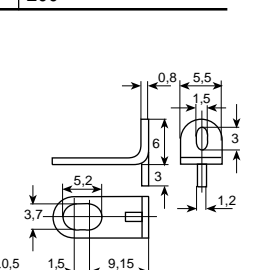
Artikel-Nr. Numéro d'article Part-No.	1136A.6() MS	1136C.6() MS	2162.6() MS	250730.6() MS	201745.6() MS	2143.6() MS
D	2.0	2.0	2.1	2.2	2.2	2.6
S	0.5	0.5	0.3	0.4	0.5	0.5
Stand.-Packg.	2000	2000	5000	5000	2000	2000



Lötösen
Spezialausführung

Cosses à souder
exécution spéciale

Special soldering tags

					
Artikel-Nr. Numéro d'article Part-No. → 2164.6() MS	Artikel-Nr. Numéro d'article Part-No. → 2081.6() MS	Artikel-Nr. Numéro d'article Part-No. → 1785.90 ST bl	Artikel-Nr. Numéro d'article Part-No. → 2160.6() MS	Artikel-Nr. Numéro d'article Part-No. → 2154.9() ST	Artikel-Nr. Numéro d'article Part-No. → 1139M.6() MS
D 3.2 S 0.3	D 3.2 S 0.5	D 3.2 S 0.75	D 3.4 S 0.3	D 3.6 S 1.0	D 4.0 S 0.5
Stand.-Packg. 5000	Stand.-Packg. 1000	Stand.-Packg. 1000	Stand.-Packg. 2000	Stand.-Packg. 2000	Stand.-Packg. 500
					
Artikel-Nr. Numéro d'article Part-No. → 2011.6() MS	Artikel-Nr. Numéro d'article Part-No. → 2078.6() MS	Artikel-Nr. Numéro d'article Part-No. → 2127.6() MS	Artikel-Nr. Numéro d'article Part-No. → 2065C.6() MS	Artikel-Nr. Numéro d'article Part-No. → 2517.6() MS	Artikel-Nr. Numéro d'article Part-No. → 251790.6() MS
D 4.0 S 0.3	D 4.1 S 0.2	D 4.3 S 0.5	D 5.3 S 0.3	D 5.7 S 0.5	D 5.7 S 0.5
Stand.-Packg. 500	Stand.-Packg. 2000	Stand.-Packg. 5000	Stand.-Packg. 1000	Stand.-Packg. 2000	Stand.-Packg. 2000
					
Artikel-Nr. Numéro d'article Part-No. → 2084.6() MS	Artikel-Nr. Numéro d'article Part-No. → 2581.6() MS	Artikel-Nr. Numéro d'article Part-No. → 2110.6() MS	Artikel-Nr. Numéro d'article Part-No. → 2080.6() MS		
D 7.8 S 0.3	D 8.2 S 0.3	D 8.2 S 0.3	D 18.2 S 0.4		
Stand.-Packg. 500	Stand.-Packg. 500	Stand.-Packg. 500	Stand.-Packg. 200		
					
Artikel-Nr. Numéro d'article Part-No. → 1100.6() MS	Artikel-Nr. Numéro d'article Part-No. → 217203.6() MS	Artikel-Nr. Numéro d'article Part-No. → 2172.6() MS	Artikel-Nr. Numéro d'article Part-No. → 2170.6() MS	Artikel-Nr. Numéro d'article Part-No. → 1794.6() MS	Artikel-Nr. Numéro d'article Part-No. → 2076.6() MS
D 1.0 x 2.6 S 0.5	D 1.5 x 3.0 S 0.3	D 1.5 x 3.0 S 0.8	D 1.5 x 3.0 S 0.8	D 1.5 x 3.2 S 0.5	D 3.7 x 5.2 S 0.8
Stand.-Packg. 2000	Stand.-Packg. 2000	Stand.-Packg. 2000	Stand.-Packg. 5000	Stand.-Packg. 1000	Stand.-Packg. 1000