

Special Terminals

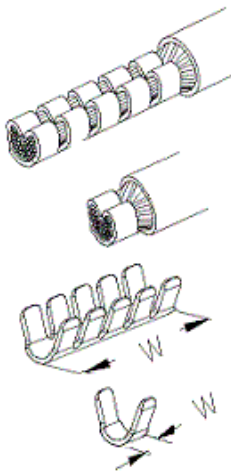
Serie updated: 07/04/2004 13:44:38

MULTISPLICES

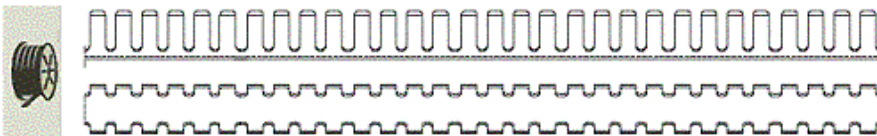
UP-STA

Depending on the application, different lengths are required on an end-splice terminal, that is why multisplices have been designed.

Depending on the number of used splices in each crimping we will have different lengths in the end connector



Sec. Cable / Wire size mm ² (AWG)	0,5-1,5	1,5-2,5	2,5-4
	(20-16) W (mm)	(16-14) W (mm)	(14-12) W (mm)
1	1,5	1,5	1,5
2	3,8	3,8	4,0
3	6,1	6,1	6,5
4	8,4	8,4	--
5	10,7	10,7	--



01. SPLICING TERMINALS

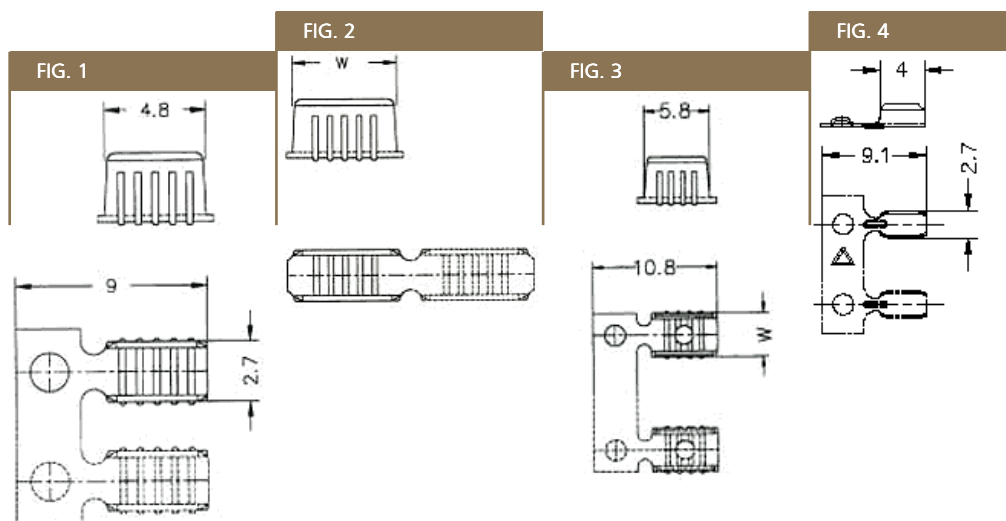
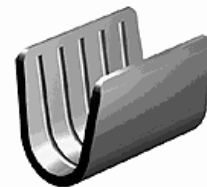


FIGURE	WIRE SIZE mm ² (AWG)	W mm	STRIP FORM		MATERIAL	TREATMENT	MATERIAL WIDTH mm	PARTS COIL
			BASE	EXTENSION				
4	0,2-0,5 (24-20)	-	5116.	00	BRASS	-	0,25	30000
				01		PRE-SN		
				02		SN		
2	0,3-1,5 (22-16)	5,8	5100.	00	STEEL	-	0,5	
				02		SN		
				24		NI		
			5118.	00	BRASS	-	0,3	
				02		SN		
				24		NI		
1	0,5-1,5 (20-16)	-	5130.	00	BRASS	-	20000	
				02		SN		
				24		NI		
2	0,75-2,5 (18-14)	5,8	5102.	00	BRASS	-	30000	
				02		SN		
				24		NI		
3		3,8	5132.	00	BRASS	-	6500	
				01		PRE-SN		
				24		NI		
2	3,5-6,5 (12-10)	5,8	5104.	01	BRASS	PRE-SN	0,5	
				00		-		
				02		SN		
3		5,7	5134.	00	BRASS	-	2500	
				01		PRE-SN		
				24		NI		
2	6-10 (10-8)	9	5106.	00	BRASS	-	6000	
				02		SN		

Special Terminals

02. MULTISPLICES

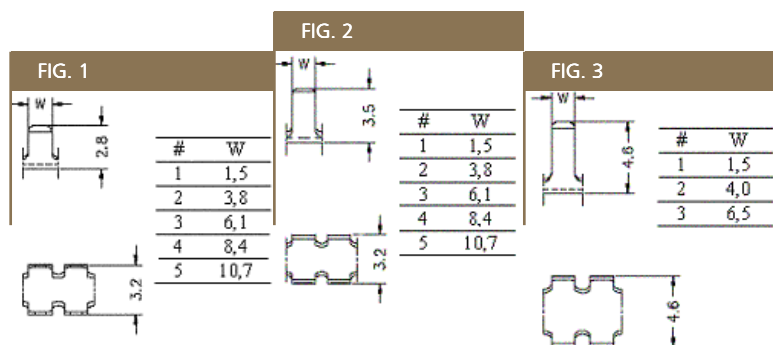
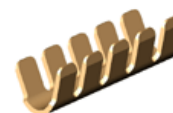


FIGURE	WIRE SIZE mm ² (AWG)	W mm	STRIP FORM		MATERIAL	TREATMENT	MATERIAL WIDTH mm	PARTS COIL
			BASE	EXTENSION				
1	0,5-1,5 (20-16)	1,5x1	5110.	00	BRASS	-	0,3	90000
				01		PRE-SN		
				24	STEEL	NI		
				30	BRONZE	-		
				31		PRE-SN		
2	1,5-2,5 (16-14)	1,5x1	5112.	00	BRASS	-	0,3	75000
				01		PRE-SN		
				24	STEEL	NI		
				30	BRONZE	-		
				31		PRE-SN		
3	2,5-4 (14-12)	1,5x1	5114.	00	BRASS	-	0,3	60000
				01		PRE-SN		
				24	STEEL	NI		
				30	BRONZE	-		
				31		PRE-SN		

See introduction for more information.

03. WEC SPLICES (ENAMEL WIRE)

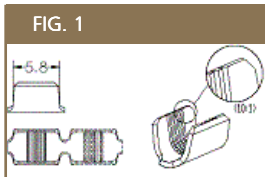
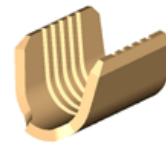


FIGURE	WIRE SIZE mm ² (AWG)	STRIP FORM		MATERIAL	TREATMENT	MATERIAL WIDTH mm	PARTS COIL
		BASE	EXTENSION				
1	0,3-1,5 (22-16)	5150.	00	BRASS	-	0,5	30000
			02		SN		
	0,75-2,5 (18-14)	5152.	00		-		
			02		SN		
	1,5-3,5 (16-12)	5154.	00		-		
			02		SN		
	3,5-6,5 (12-10)	5156.	00		-		15000
			02		SN		

04. END CONNECTORS

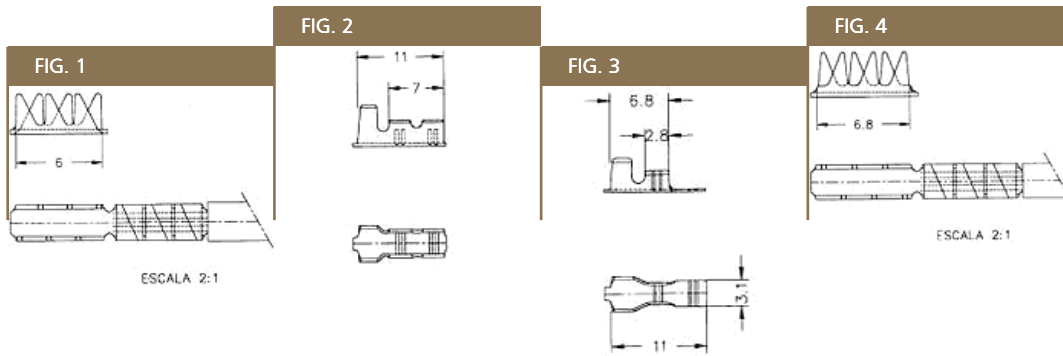


FIGURE	WIRE SIZE mm ² (AWG)	Ø INSULATION mm	DIN	STRIP FORM		MATERIAL	TREATMENT	MATERIAL WIDTH mm	PARTS COIL
				BASE	EXTENSION				
1	0,5-0,75 (20-18)	-	Esp	8906.	00	BRASS	-	0,3	40000
					02	BRASS	SN		
					24	STEEL	NI		
2	0,5-1 (20-18)	2-2,9	46228	8900.	00	BRASS	-	0,3	15000
					02	BRASS	SN		
					04	BRASS	NI		
					24	STEEL	NI		
3				8925.	24	STEEL	NI		
4	0,75-1,5 (18-16)	-	Esp	8910.	00	BRASS	-	0,3	42000
					02	BRASS	SN		
					24	STEEL	NI		
1	0,75-2 (18-14)	-	Esp	8904.	00	BRASS	-	0,3	40000
					02	BRASS	SN		
					24	STEEL	NI		
2	1-2,5 (18-14)	3-4,3	46228	8902.	00	BRASS	-	0,3	12000
					02	BRASS	SN		
			Esp		04	BRASS	NI		
					24	STEEL	NI		

Special Terminals