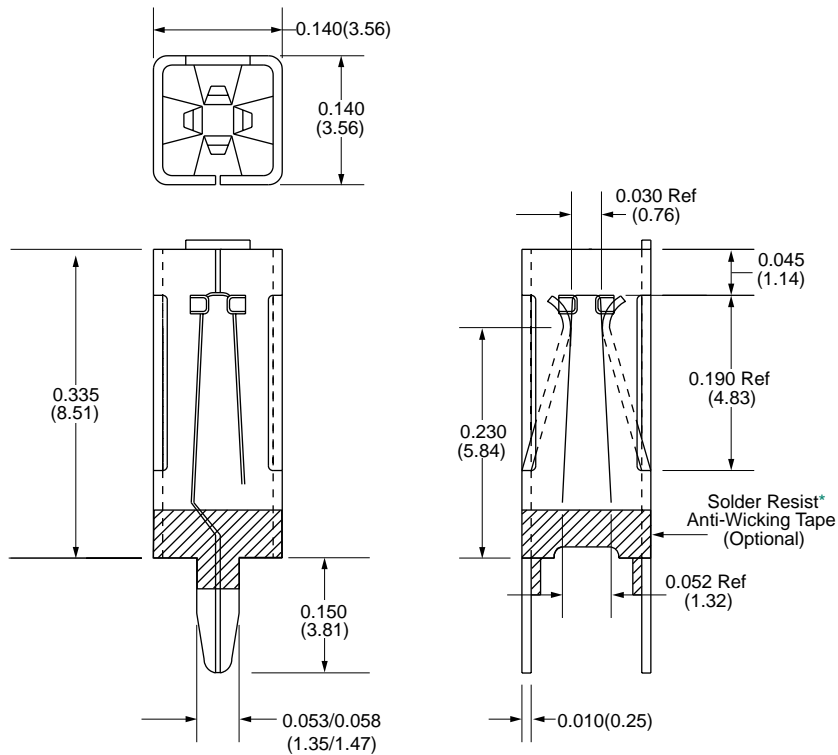


Bottom Entry 4 Beam Receptacles

Loose Part No.	Reeled Part No.	Tape Resist	Mating Terminal Size
1062-101-6	6062-101-6	Yes	0.095" (2.41mm) Max 0.060" (1.52mm) Rd. or Sq. 0.095" (2.41mm) Rd. or Sq.
Application Data			
Mounting Type	Outward Splay		Mating Entry Bottom
Material Thickness/ Type	0.010" (0.25mm) Phosphor Bronze		Applicator Loose: Consult factory
Standard Finish	Loose: 95/5 Matt Tin/Lead over Copper Reeled: 95/5 Matt Tin/Lead over Copper		System Reeled: Model 9700, 9718
Mating Type	Vertical		Mounting Hole Diameter 0.150"±0.003" (3.81mm±0.076mm)
Performance Data			
Current Rating	10 Ampere		Insertion Force-Max. Application Dependent /Submit Mating Terminal Sample To Factory
Resistance Rating	1mΩ Max		Withdrawal Force-Min. Application Dependent /Submit Mating Terminal Sample To Factory
Temperature Rating	-65° to 105°C		



*U.S. Patent No. 5,495,669

For exact finish specifications and available special finishes, see Finish Table (page 91).