



Vogt Verbindungstechnik

**6,3
mm**

Flachsteckhülsen

DIN 46247 Teil 3
DIN 46340 Teil 3 zum Einrasten
in Tüllen

Clips femelles plats

DIN 46247 partie 3
DIN 46340 partie 3 pour encliqueter
dans des boîtiers

Flat receptacles

DIN 46247 part 3
DIN 46340 part 3 to engage
in housings

Werkstoff:

MS = Messing
ST = Stahl

Matière:

MS = laiton
ST = acier

Material:

MS = brass
ST = steel

Strombelastbarkeit:

0.5 - 1.0 mm² / 10 A max.
1.5 - 2.5 mm² / 15 A max.
4.0 - 6.0 mm² / 25 A max.

Intensité admissible:

0.5 - 1.0 mm² / 10 A max.
1.5 - 2.5 mm² / 15 A max.
4.0 - 6.0 mm² / 25 A max.

Current carrying capacity:

0.5 - 1.0 mm² / 10 A max.
1.5 - 2.5 mm² / 15 A max.
4.0 - 6.0 mm² / 25 A max.

Oberflächenbehandlung: Code

bl = blank (0)
ag = versilbert (1)
au = vergoldet (2)
ni = vernickelt (5)
sn = reinverzinkt (7)

Traitements de surface: Code

bl = brut (0)
ag = argenté (1)
au = doré (2)
ni = nickelé (5)
sn = étamage pur (7)

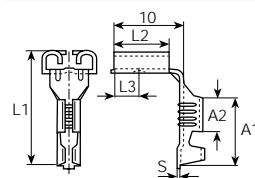
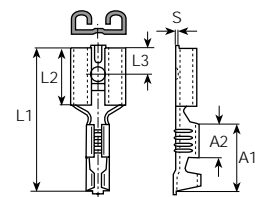
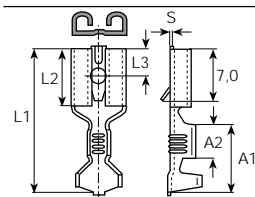
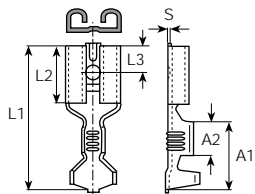
Surface-plating: Code

bl = clean (0)
ag = silver-plated (1)
au = gold-plated (2)
ni = nickel plated (5)
sn = pure tin-plated (7)

Bestellbeispiel

Exemple de commande:
Example of order:

↓
3831.67
(3831 MS sn)



mm ² (AVG)	für Steckungen pour languettes for tabs	Artikel-Nr. Numéro d'article Part-No.	DIN	L1 mm	L2 mm	L3 mm	A1 mm	A2 mm	S mm	Stand- Packg	Werkzeuge Outils Tools
0.5-1 (22-18)	6.3 x 0.8	3831.6() MS	46247/T3	19	7.5	4	9	4.5	0.45	1000	3975B 3988N 3984A
	6.3 x 0.8	3831.95 ST ni	46247/T3	19	7.5	4	9	4.5	0.45	1000	
0.5-1.5 (22-16)	6.3 x 0.8	3832.6() MS	46247/T3	19	7.5	4	9	4.5	0.45	1000	3975B 3988N 3984A
	6.3 x 0.8	3832.95 ST ni	46247/T3	19	7.5	4	9	4.5	0.45	1000	
1.5-2.5 (16-14)	6.3 x 0.8	3833.27 BZ sn	46247/T3	19	7.5	4	9	4.5	0.45	1000	3975C 3988N 3984A
	6.3 x 0.8	3833.6() MS	46247/T3	19	7.5	4	9	4.5	0.45	1000	
	6.3 x 0.8	3833.95 ST ni	46247/T3	19	7.5	4	9	4.5	0.45	1000	
4-6 (12-10)	6.3 x 0.8	3835A.67 MS sn	46247/T3	19	7.5	4	9	4.5	0.45	500	3975C 3988N 3984B
	6.3 x 0.8	3835.95 St ni	46247/T3	19	7.5	4	9	4.5	0.45	500	
1-2.5 (18-14)	6.3 x 0.8	3832D.6() MS	46340/T3	19	7.5	4	9	4.5	0.45	1000	3975B 3988N 3984A
4-6 (12-10)	6.3 x 0.8	3835.6() MS	46247/T3	19	7.5	4	9	4.5	0.45	500	3975C 3988N 3984B
0.5-1 (22-18)	6.3 x 0.8	3832W.6() MS		15.2	7.5	4	9	4.5	0.45	1000	3975B 3988N 3984A
1.5-2.5 (16-14)	6.3 x 0.8	3833W.6() MS		15.2	7.5	4	9	4.5	0.45	1000	3975C 3988N 3984B

Aufsteckwerkzeug
siehe Seite 549A

Outil à enficher
voir page 549A

Push-on tool
see page 549A



Vogt Verbindungstechnik

Flachsteckhülsen in Bandform

DIN 46247 Teil 3

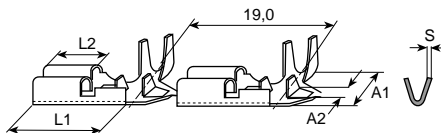
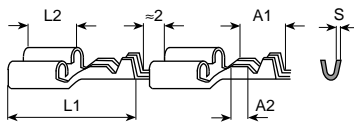
Clips femelles plats en bande

DIN 46247 partie 3

Flat receptacles in chain form

DIN 46247 part 3

**6,3
mm**



mm ² (AWG)	für Steckungen pour languettes for tabs	Artikel-Nr. Numéro d'article Part-No.	L1 mm	L2 mm	A1 mm	A2 mm	S mm	Rolle Bobine Reel
0.5-1 (22-18)	6.3 x 0.8	38310.6() MS	19	7.5	9	4.5	0.45	à 8'000
1.5-2.5 (16-14)	6.3 x 0.8	38330.6() MS	19	7.5	9	4.5	0.45	à 7'000
0.5-1 (22-18) ⁵	6.3 x 0.8	38372.6() MS	12.5	7.4	11	3.5	0.38	à 3'500

Steckungen

DIN 46248 Teil 3 Form A

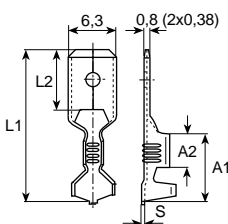
Languettes

DIN 46248 partie 3 form A

Tabs

DIN 46248 part 3 form A

**6,3
mm**



mm ² (AWG)	für Flachsteckhülsen pour clip femelle plat for flat receptacles	Artikel-Nr. Numéro d'article Part-No.	L1 mm	L2 mm	A1 mm	A2 mm	S mm	Stand- Packg	Werkzeuge Outils Tools
0.5-1 (22-18)	6.3 x 0.8	3836A.6() MS	20	8	9	4.5	0.38	1000	3971 (ohne Führung) 3975B 3976 3984A / 3997 3988
1.5-2.5 (16-14)	6.3 x 0.8	3836B.6() MS	20	8	9	4.5	0.38	1000	3971 (ohne Führung) 3975C 3976 3984A / 3997 3988
4-6 (12-10)	6.3 x 0.8	3836C.6() MS	20	8	9	4.5	0.38	500	3975C 3984B / 3997 3988



Flachsteckhülsen DIN 46247 Teil 3

Clips femelles plats DIN 46247 partie 3

Flat receptacles DIN 46247 part 3

Werkstoff:
 MS = Messing

Matière:
 MS = laiton

Material:
 MS = brass

Strombelastbarkeit:
0.5 - 1.0 mm² / 10 A max.
1.5 - 2.5 mm² / 15 A max.

Intensité admissible:
0.5 - 1.0 mm² / 10 A max.
1.5 - 2.5 mm² / 15 A max.

Current carrying capacity:
0.5 - 1.0 mm² / 10 A max.
1.5 - 2.5 mm² / 15 A max.

Oberflächenbehandlung: Code
 bl = blank (0)
 ag = versilbert (1)
 au = vergoldet (2)
 ni = vernickelt (5)
 sn = reinverzinkt (7)

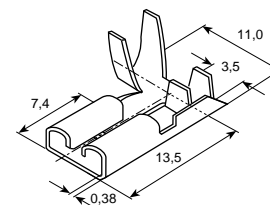
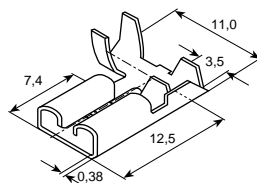
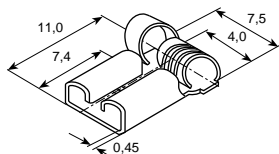
Traitements de surface: Code
 bl = brut (0)
 ag = argenté (1)
 au = doré (2)
 ni = nickelé (5)
 sn = étamage pur (7)

Surface-plating: Code
 bl = clean (0)
 ag = silver-plated (1)
 au = gold-plated (2)
 ni = nickel plated (5)
 sn = pure tin-plated (7)

Bestellbeispiel
Exemple de commande:
Example of order:

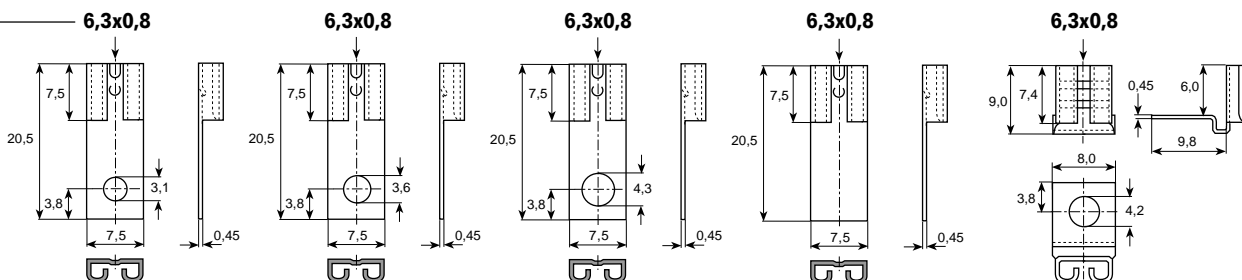
38371A.67
 (38371A MS sn)

6,3 mm



Artikel-Nr. Numéro d'article Part-No.	→ 38371A.6() MS 0.5-1.5 mm² 6.3x0.8 500	38372C.6() MS 0.5-1 mm² 6.3x0.8 500	38373C.6() MS 1.5-2.5 mm² 6.3x0.8 500
Stand.-Packg.			
Werkzeuge Outils / Tools	3983A / 3984K	3983B / 3984M	3983C / 3984N

für Steckungen
 pour languettes
 for tabs



Artikel-Nr. Numéro d'article Part-No.	→ 3839L.6() MS 6.3x0.8 500	3839M.6() MS 6.3x0.8 500	3839N.6() MS 6.3x0.8 500	3839T.6() MS 6.3x0.8 500	3839W.6() MS 6.3x0.8 500
Stand.-Packg.					
Werkzeuge Outils / Tools					



Steckverteiler

Masse im Steckbereich
 DIN 46342 Teil 1

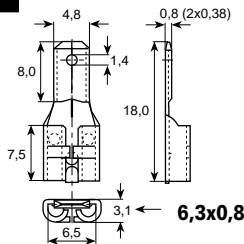
Raccords mixtes

Dimensions zone d'emboîtement selon
 DIN 46342 partie 1

Multi-connectors

Dimensions in the tab sector
 DIN 46342 part 1

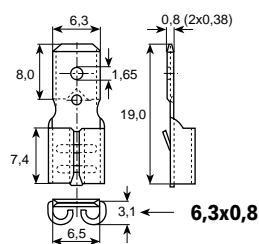
**6,3
mm**



Artikel-Nr. → **3829G.6 () MS**

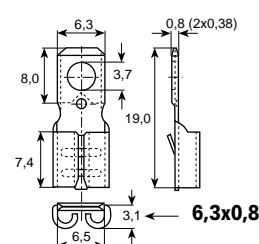
Numéro d'article
 Part-No. siehe Seite 318
 voir page 318
 see page 318

Stand.-Packg.



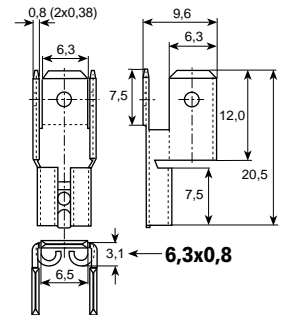
Artikel-Nr. → **3839E.6 () MS**

Numéro d'article
 Part-No. siehe Seite 336
 voir page 336
 see page 336



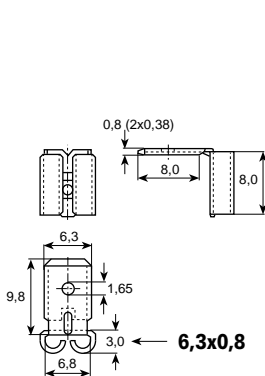
Artikel-Nr. → **3839G.6 () MS**

Numéro d'article
 Part-No. siehe Seite 336
 voir page 336
 see page 336



Artikel-Nr. → **3838E.6 () MS**

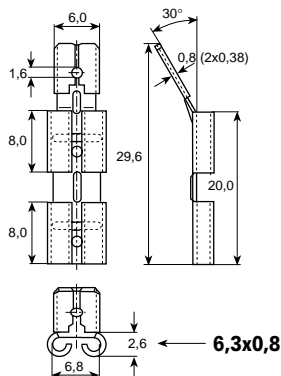
Numéro d'article
 Part-No. siehe Seite 336
 voir page 336
 see page 336



Artikel-Nr. → **3839F.6 () MS**

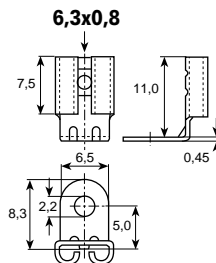
Numéro d'article
 Part-No. siehe Seite 336
 voir page 336
 see page 336

Stand.-Packg.



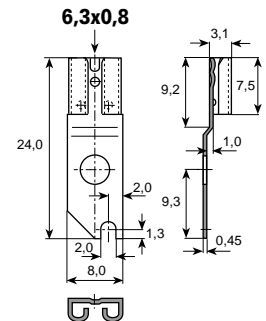
Artikel-Nr. → **3838D.6 () MS**

Numéro d'article
 Part-No. siehe Seite 336
 voir page 336
 see page 336



Artikel-Nr. → **3839C.6 () MS**

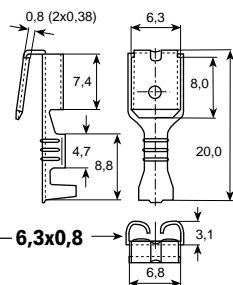
6.3x0.8
 500



Artikel-Nr. → **3839P.6 () MS**

6.3x0.8
 500

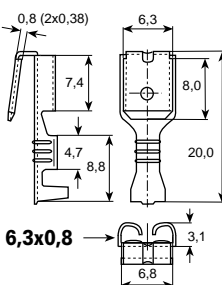
für Steckungen
 pour languettes
 for tabs



Artikel-Nr. → **3838A.6 () MS**

Numéro d'article
 Part-No. **0.5 - 1.5 mm²**
 6.3x0.8 / 6.3x0.8
 500

Stand.-Packg.



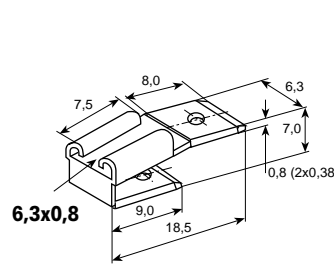
Artikel-Nr. → **3838B.6 () MS**

Numéro d'article
 Part-No. **1.5 - 2.5 mm²**
 6.3x0.8 / 6.3x0.8
 500

Werkzeuge
 Outils / Tools

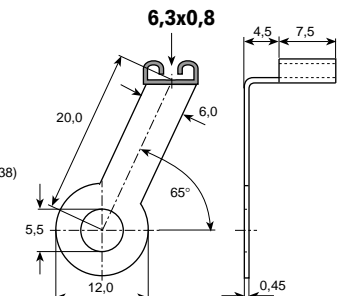
3971 / 3975B / 3976
3984A / 3988 / 3997

3971 / 3975C / 3976
3984A / 3988 / 3997



Artikel-Nr. → **3838.27 BZ sn**

Numéro d'article
 Part-No. **3838.6 () MS**
 siehe Seite 336
 voir page 336
 see page 336



Artikel-Nr. → **3839P.6 () MS**

6.3x0.8
 500