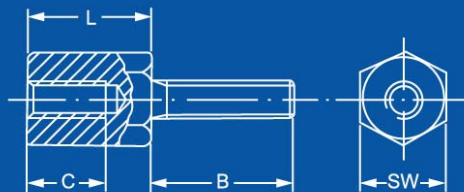


# UNC

Jackscrews  
4-40 to 4-40



Dimensions in mm



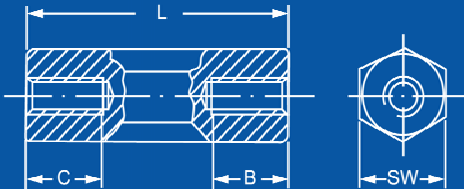
L Length	Brass Nickel Plated											
	Part #	C	B	SW								
5	10.1040.56	3	6	5								
5	10.1040.58	3	8	5								
5	10.1040.512	3	12	5								
6	10.1040.66	3	6	5								
6	10.1040.68	3	8	5								
6	10.1040.612	3	12	5								

# UNC

Jackscrews  
4-40 to 4-40



Dimensions in mm



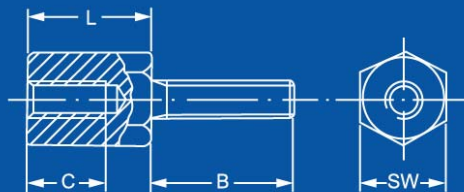
L Length	Brass Nickel Plated											
	Part #	C	B	SW								
5	10.1060.05	5	5	5								
6	10.1060.06	5	5	5								
8	10.1060.08	8	8	5								
10	10.1060.10	8	8	5								
12	10.1060.12	8	8	5								
15	10.1060.15	8	8	5								

# UNC

Jackscrews  
M3 to 4-40



Dimensions in mm



L Length	Brass Nickel Plated											
	Part #	C	B	SW								
5	10.1050.56	3	6	5								
5	10.1050.58	3	8	5								
5	10.1050.512	3	12	5								
6	10.1050.66	3	6	5								
6	10.1050.68	3	8	5								
6	10.1050.612	3	12	5								