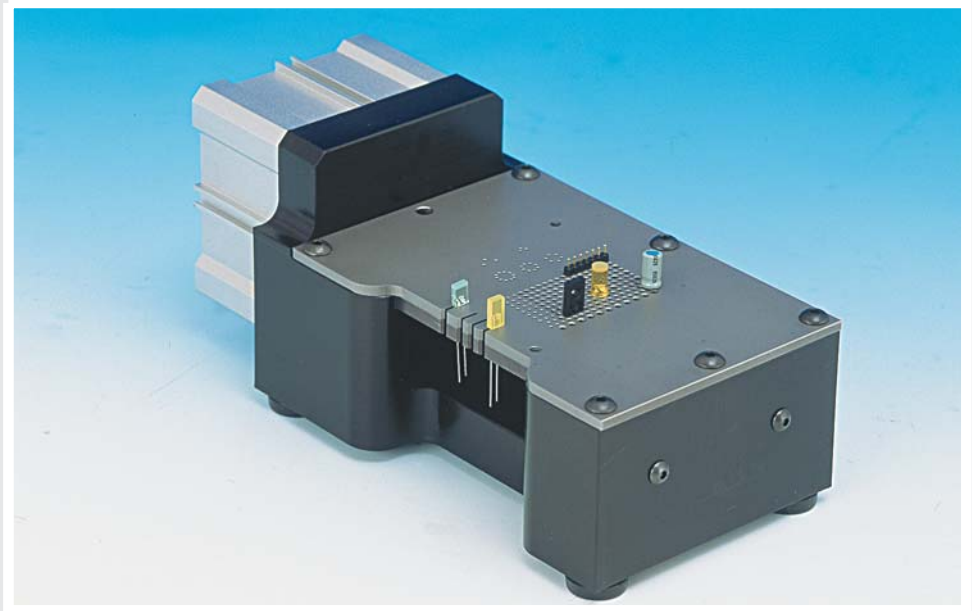
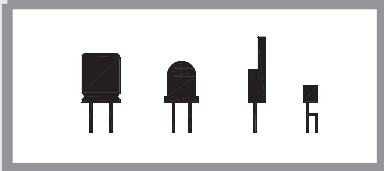


# TP/LN 100

pneumatic  
cutting machine  
for loose  
radial  
components



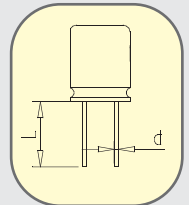
TP/LN-100

cutting area 45x54 mm (1.77 x2.12")  
(Cod.36.OL01)

LENGTH = 21 cm  
WIDTH = 10 cm  
HEIGHT = 10 cm  
PACKING = 39x25x26 cm  
VOLUME = 0,025 m<sup>3</sup>  
MACHINE WEIGHT = 3 kg  
GROSS WEIGHT = 5 kg

LEAD DIA. = 0,3 - 1 mm (.011-.039")  
PRODUCTION = 3.000 p/h

	MM			INCH		
	min	max	fix	min	max	fix
<b>L</b>			3,2			.125
<b>d</b>	0,3	1		.011	.039	



The pneumatic machine TP/LN-100 is used for cutting the leads of loose radial components. It was designed to adapt to a very wide range of radial parts.

The upper stationary plate determines the cutting height; the standard is = 3,2mm (.125 inc.). Additional plates to increase this height can be supplied upon request, starting from 0,5 mm (.019 inc.).

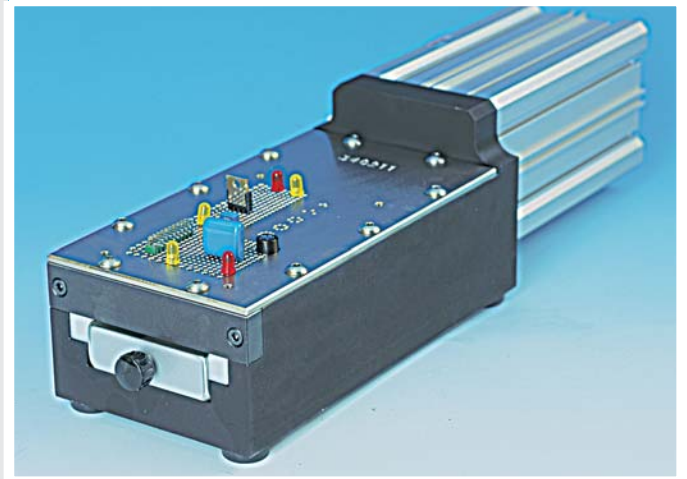
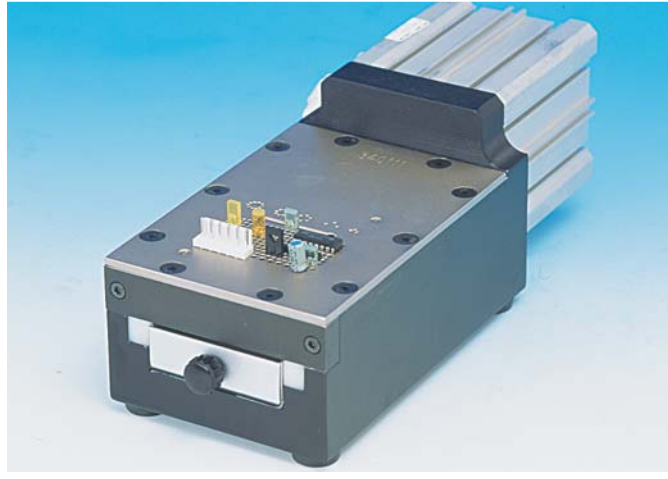
The pneumatic foot pedal controls the stroke of the lower plate, which performs a quick cut of the leads, without any stress to the components.

The plates have a standard grid pattern, to accommodate most types of components. Plates with special grid pattern can be provided upon request.

Lateral cuts at most common pitches allow to easily handle warped leads.

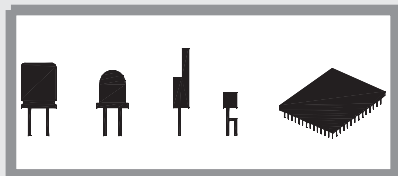
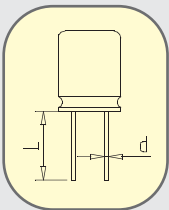
# TP/LN 500

pneumatic  
cutting machine  
for loose  
radial  
components



TP/LN-500/1  
CUTTING AREA 53X43mm (2.09X1.7") - (Cod.340001)  
STANDARD STATIONARY PLATE  
(Cod.340111)

TP/LN-500/2  
CUTTING AREA 53X93mm (2.09x3.66") - (Cod. 340002)  
STANDARD STATIONARY PLATE  
(Cod.340211)



	MM			INCH		
	min	max	fix	min	max	fix
<b>L</b>			3,2			.125
<b>d</b>	0,3	1,3		.011	.051	

**LEAD DIA. = 0,3 - 1,3 mm (.011-.051")**  
**PRODUCTION = 3.000 p/h**

**LENGTH = 25 cm**  
**WIDTH = 10 cm**  
**HEIGHT = 10 cm**  
**PACKING = 39x25x26 cm**  
**VOLUME = 0,025 m<sup>3</sup>**  
**MACHINE WEIGHT = 5 kg**  
**GROSS WEIGHT = 6 kg**

The pneumatic machine TP/LN-500 cuts the leads of loose radial components by using a "guillotin" type lower blade. This model can handle any kind of components regardless of the diameter, pitch and form.

The force applied by the long cylinder, which is controlled by the foot pedal, allows to obtain the best results with particularly hard materials.

The upper plate to be always ordered with the machine determines the cutting height, which is standard at mm 3,2 (.125 inc.) and the request hole layout.

Additional plates to increase this height can be supplied upon request, starting from 0,5 mm (.019 inc.).

The standard grid pattern accommodates most types of components. Special grid pattern plates can be provided upon request.