



Vogt Verbindungstechnik

Scheiben

Presspan
Polyamid / Nylon
Polyvinylchlorid
Teflon

Werkstoff:

PR = Presspan
 PA = Polyamid / Nylon
 PV = Polyvinylchlorid
 TF = Teflon +270° C

Rondelles

presspan
polyamide / nylon
chlorure polyvinyle
teflon

Matière:

PR = presspan
 PA = polyamide / nylon
 PV = chlorure polyvinyle
 TF = teflon +270° C

Washers

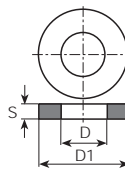
pressboard
polyamid / nylon
polyvinylchlorid
teflon

Material:

PR = pressboard
 PA = polyamid / nylon
 PV = polyvinylchlorid
 TF = teflon +270° C

Bestellbeispiel:
Exemple de commande:
Example of order:

P012030030PR
 (1.2 x 3.0 x 0.3 PR)



Werkstoff Matière Material	øD mm	øD1 mm	S mm	DIN	Stand.-Packg.		Artikel-Nr. Numéro d'article Part-No.
					2000	5000	
Presspan Presspan Pressboard	1.2	3	0.3			•	P012030030PR
	1.5	3	0.5			•	P015030050PR
	1.6	6	0.5			•	P016060050PR
	1.8	3	0.5			•	P018030050PR
		4	0.5			•	P018040050PR
		4.5	0.5			•	P018045050PR
	2.2	4	0.5			•	P022040050PR
		5	0.5			•	P022050050PR
	2.4	5	0.5			•	P024050050PR
	2.5	5	0.5			•	P025050050PR
	2.8	8	0.8			•	P025080080PR
		4.5	0.5			•	P028045050PR
		5.5	0.3			•	P028055030PR
		5.5	0.5			•	P028055050PR
		6.5	0.5			•	P028065050PR
	3.2	7	0.5			•	P028070050PR
		5	0.5			•	P032050050PR
		6	0.5			•	P032060050PR
		6	0.8			•	P032060080PR
		6	1.5			•	P032060150PR
		7	1.0			•	P032070100PR
		7	2.0			•	P032070200PR
		8	0.5			•	P032080050PR
	8	1.0			•	P032080100PR	
3.5	8	1.5			•	P032080150PR	
	7	0.5			•	P035070050PR	
3.7	9	1.0			•	P035090100PR	
	7	0.8			•	P037070080PR	
4.2	8	0.5			•	P042080050PR	
	8	1.0			•	P042080100PR	
	10	0.5			•	P042100050PR	
	10	1.0			•	P042100100PR	
4.8	12	0.8			•	P048120080PR	
	5.3	8	0.5	433		•	P053080050PR
	8	1.0			•	P053080100PR	
	11	0.5			•	P053110050PR	
	12	1.0			•	P053120100PR	
6.3	10	0.6			•	P063100060PR	
	12	0.5			•	P063120050PR	
6.4	11	1.6		433	•	P064110160PR	
	12	1.0			•	P064120100PR	
7	14	1.5			•	P070140150PR	
8.2	15	1.0			•	P082150100PR	
9	12	0.3			•	P090120030PR	

Werkstoff Matière Material	øD mm	øD1 mm	S mm	DIN	Stand.-Packg.		Artikel-Nr. Numéro d'article Part-No.
					2000	5000	
Presspan Presspan Pressboard	9.2	11.6	0.3			•	P092116030PR
	10	21	1.0		1000		P100210100PR
	12.5	19	1.0		1000		P125190100PR
	14.2	24.8	1.0		1000		P142248100PR
Polyamid Polyamide Polyamid	2.2	6	0.5			•	P022060050PA
	3.2	6	0.8			•	P032060080PA
		8	1.0			•	P032080100PA
		8	3.0			•	P032080300PA
	4.2	10	0.25			•	P042100025PA
	4.5	8	0.3			•	P045080030PA
		8	0.5			•	P045080050PA
	5.3	8	0.5			•	P053080050PA
	5.5	16	0.4			•	P055160040PA
		19	1.0			•	P055190100PA
6.5	12	0.5			•	P065120050PA	
	12	1.0			•	P065120100PA	
PV	4.2	7	0.5			•	P042070050PV
	5	11	2.0			•	P050110200PV
Teflon	2.8	4.5	0.5			•	P028045050TF
	3	5	0.1			•	P030050010TF
	6	10	1.0			•	P060100100TF
		16	1.0			•	P060160100TF

Andere Abmessungen auf Anfrage

Autres dimensions sur demande

Further dimensions on request