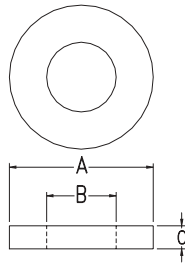
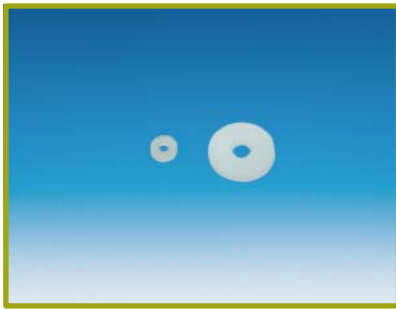


Washer 15.WS~



Part	A	B	C
WS5-2	10.0	5.2	2.0
WS5-5	8.0	5.0	5.0
#WS6-0.8	12.8	6.4	0.8
WS6-2	12.8	6.4	2.0
#WS7-1	15.0	7.1	1.0
#WS8-1	18.0	8.2	1.0
WS8-3	24.0	8.05	3.0

- # Material: PE
- * Material: PC
- WS3-5(6) Material: PC UL 94V-2
- Other Items Material: Nylon 66 (UL)
- Flame Class: 94V-2
- Color: Natural
- Unit: mm

Part	A	B	C
WS10-1.5	16.0	10.0	1.5
WS13-2	23.0	13.0	2.0
WS2.2-12PC	3.7	2.2	1.2
WS2.5-10PC	5.0	2.5	1.1
*WS2.5-1PC	9.0	2.5	1.0
*WS2-0.5	6.0	2.5	0.5
WS2.1-0.8	4.5	2.1	0.8
*WS3-1.5	6.0	3.0	1.5
WS3-10	8.0	3.1	1.0
WS3-15	8.0	3.1	1.5
WS3-2	6.0	3.1	2.0
WS3-20	8.0	3.1	2.0
WS3-3.4	6.0	3.1	3.4
WS3-5	8.0	3.1	0.5
WS3-5(6)	6.0	3.1	0.5
WS3-8	8.0	3.1	0.8
WS3-1.4	6.35	3.2	1.4
#WS4-1	6.8	4.2	1.0
WS4-10	8.0	4.1	1.0
WS4-15	8.0	4.1	1.5
WS4-20	8.0	4.1	2.0
WS4-3	8.0	4.6	0.3
WS4-5	8.0	4.1	0.5
WS4-8	8.0	4.1	0.8
WS4.1-1-10	6.5	4.1	1.0
WS40-1.5	45.5	40.0	1.5
WS5-0.5	8.0	5.2	0.5
WS5-1	10.0	5.2	1.0
WS5-1.2	19.5	5.0	1.2