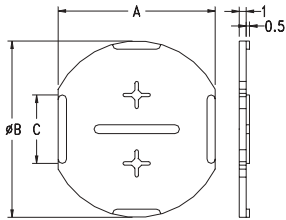


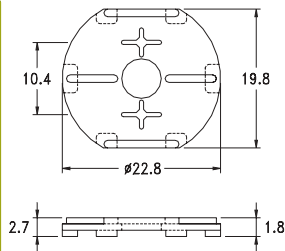
## Part Washer 15.CW~



- Material: Nylon 66 (UL)
- Flame Class: 94V-2
- Color: Natural
- Unit: mm

Part	A	B	C	Pack Size
CW-16	14.6	16.2	7.5	1000
CW-18	16.4	18.2	7.5	1000
CW-22	20.0	22.2	10.0	500
CW-25	23.0	25.7	10.0	500
CW-30	27.2	30.3	10.0	500
CW-35	31.8	35.3	10.0	500

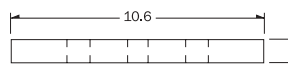
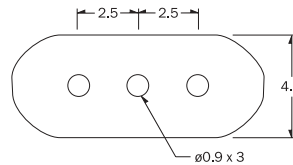
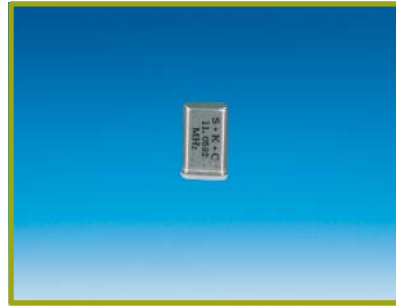
## Part Washer 15.CW-1



- Material: Nylon 66 (UL)
- Flame Class: 94V-2
- Color: Natural
- Unit: mm

Part	Pack Size
CW-1	500

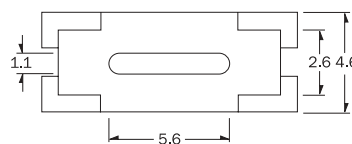
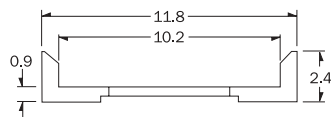
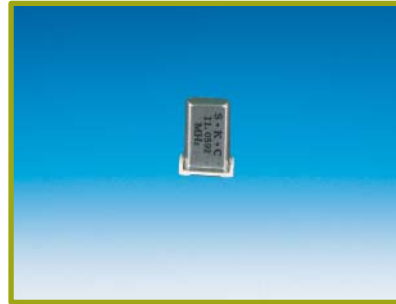
## Part Washer 15.QW-1



- Material: Nylon 66 (UL)
- Flame Class: 94V-2
- Color: Natural
- Unit: mm

Part	Pack Size
QW-1	2000

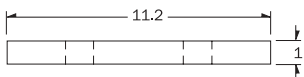
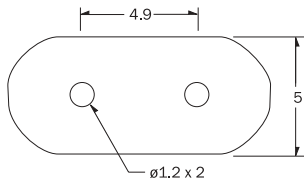
## Part Washer 15.QW-2



- Material: Nylon 66 (UL)
- Flame Class: 94V-0
- Color: Natural
- Unit: mm

Part	Pack Size
QW-2	2000

## Part Washer 15.QW-3



- Material: Nylon 66 (UL)
- Flame Class: 94V-2
- Color: Natural
- Unit: mm

Part	Pack Size
QW-3	2000