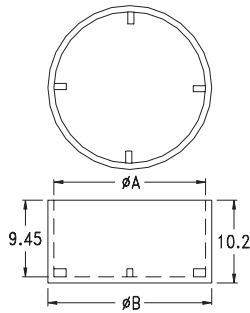
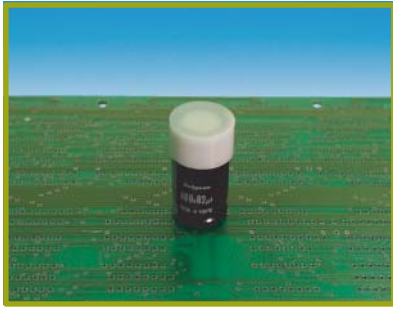


Cover 15.BCC~



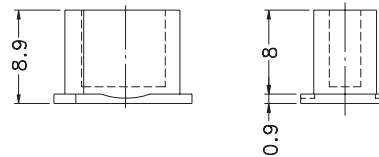
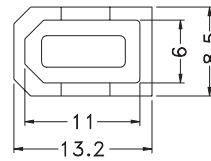
- Material: Nylon (UL)
- Flame Class: 94-V2
- Color: Natural
- Unit: mm

Part	A	B	Pack Size
BCC-16	16.7	18.2	500
BCC-18	18.7	20.0	500

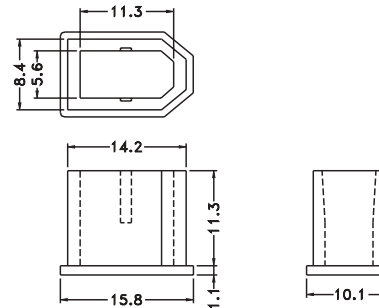
Cover 15.CVR~



- Material: PE
- Color: Dark Grey
- Unit: mm

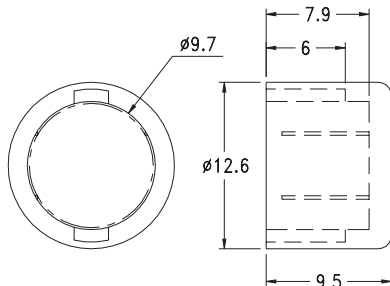


Part	Pack Size
CVR-1394	1000



Part	Pack Size
CVR-1394-1	1000

Cover 15.BNC-2

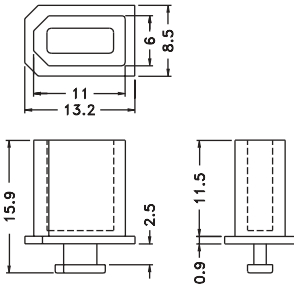


- Material: PE
- Color: Grey/Black
- Unit: mm

Part	Pack Size
BNC-2	1000

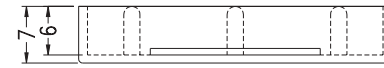
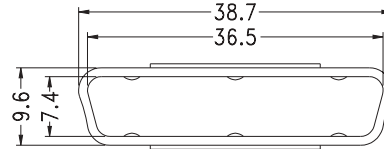


Cover 15.CVR-1394S

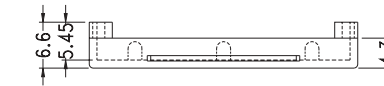
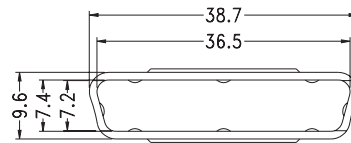


- Material: PE
- Color: Dark Grey
- Unit: mm

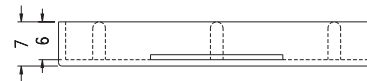
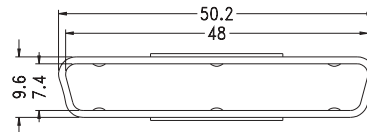
Part	Pack Size
CVR-1394S	1000



Part	Pack Size
DTC-50M	500



Part	Pack Size
DTC-50S	500

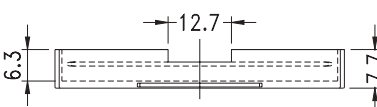
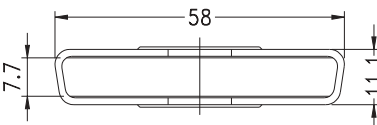


Part	Pack Size
DTC-68	500

Cover 15.DTC~

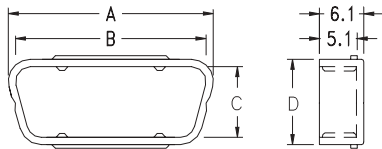
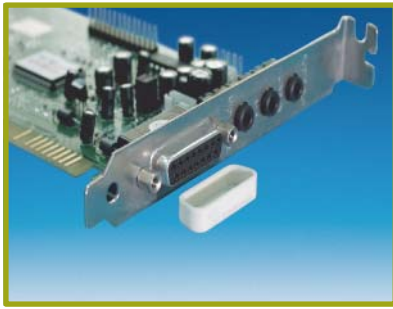


- Material: PE
- Color: Beige/Black/Natural
- Unit: mm



Part	Pack Size
DTC-37M	500

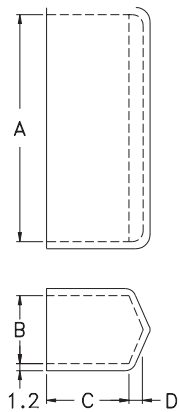
Cover 15.DTC~



- Material: PE
- Color: Beige/Black/Natural
- Unit: mm

Part	A	B	C	D	Pack Size
DTC-9F	18.5	16.5	7.8	10.2	1000
DTC-15F	26.8	24.8	7.8	10.2	500
DTC-25F	40.6	38.6	7.8	10.2	500
DTC-9M	20.0	18.0	9.4	11.8	1000
DTC-15M	28.2	26.4	9.4	11.8	500
DTC-25M	42.0	40.0	9.4	11.8	500

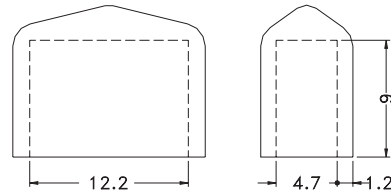
Cover 15.FH~



- Material: Soft P.V.C.
- Unit: mm

Part	A	B	C	D	Color	Pack Size
FH-1	20.0	6.0	10.5	1.0	Blue	1000
FH-1L	22.0	6.0	10.5	1.0	Blue	1000
FH-3	18.0	5.3	10.5	1.0	Blue	1000
FH-3A	31.0	8.1	11.5	-	Blue	1000
FH-1S	31.8	9.5	11.5	2.0	Blue	1000
FH-1(B)	20.2	6.0	10.5	1.0	Black	1000

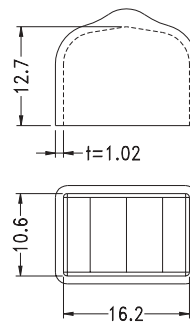
Cover 15.FH-13



- Material: Soft P.V.C.
- Color: Natural
- Unit: mm

Part	Pack Size
FH-13	1000

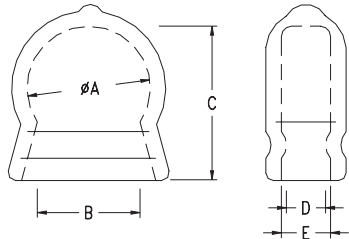
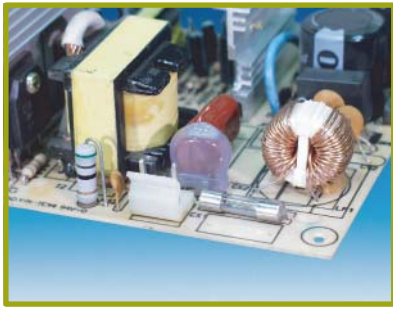
Cover 15.FH-17



- Material: Soft P.V.C.
- Color: Blue
- Unit: mm

Part	Pack Size
FH-17	1000

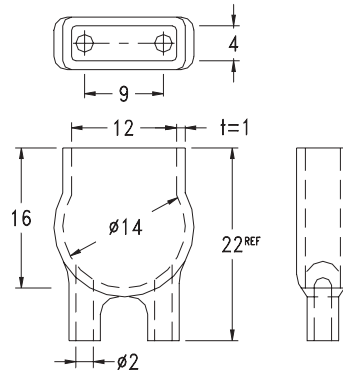
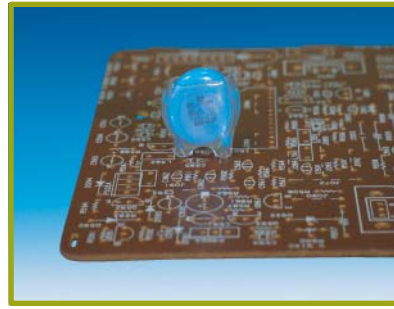
Cover 15.HU~



- *Material: Soft P.V.C. suitable for high temperatures
- Other Items Material: Soft P.V.C.
- Color: Natural/Blue
- Unit: mm

Part	A	B	C	D	E	Color
HU-8	8.5	7.5	10.0	3.0	3.0	Natural
*HU-8(BU)	8.5	7.5	10.0	3.0	3.0	Clear Blue
HU-12	12.0	10.0	15.0	3.8	4.8	Natural
*HU-12(BU)	12.0	10.0	15.0	3.8	4.8	Clear Blue

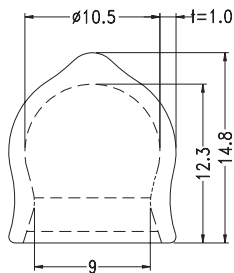
Cover 15.HU-14



- Material: Soft P.V.C.
- Color: Natural/Blue
- Unit: mm

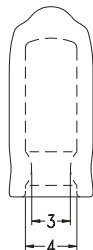
Part	Pack Size
HU-14	1000

Cover 15.HU-10

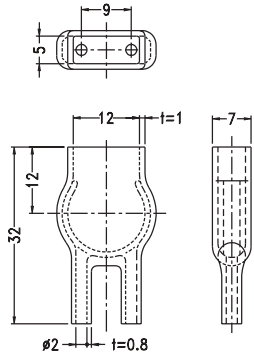


- Material: Soft P.V.C.
- Color: Natural/Blue
- Unit: mm

Part	Pack Size
HU-10	1000



Cover 15.HU-16



- Material: Soft P.V.C.
- Color: Natural/Blue
- Unit: mm

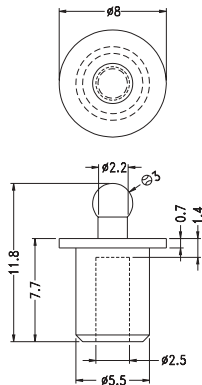
Part	Pack Size
HU-16	1000

Cover 15.JKCV-1

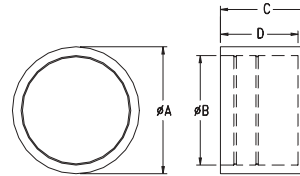


- Material: Rubber
- Color: Black
- Unit: mm

Part	Pack Size
JKCV-1	1000



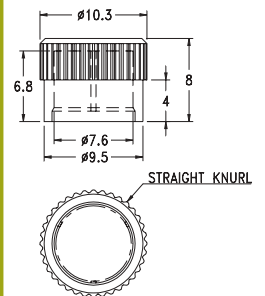
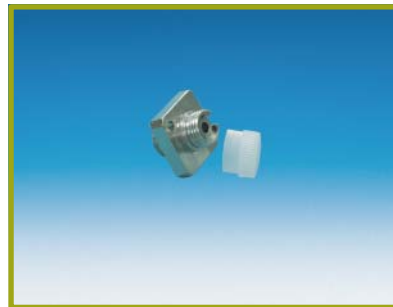
Cover 15.KPS~



- Material: PE
- Color: Natural
- Unit: mm

Part	A	B	C	D	Pack Size
KPS-1	15.8	13.4	11.2	10.0	500
KPS-2	10.7	9.0	9.6	8.6	1000
KPS-3	10.3	8.4	8.0	7.0	1000

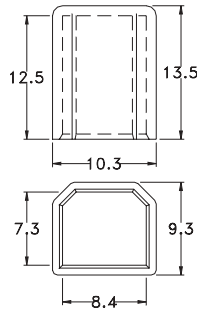
Cover 15.KPS-4



- Material: PE
- Color: Natural
- Unit: mm

Part	Pack Size
KPS-4	1000

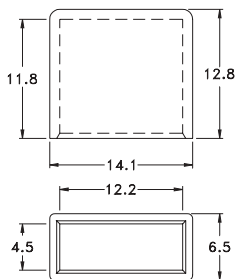
Cover 15.KPS-5



- Material: PE
- Color: Natural
- Unit: mm

Part	Pack Size
KPS-5	1000

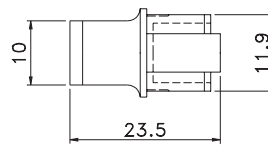
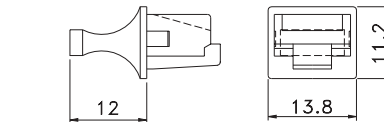
Cover 15.KPS-6



- Material: PE
- Color: Natural
- Unit: mm

Part	Pack Size
KPS-6	1000

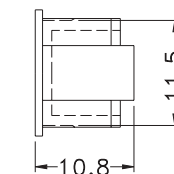
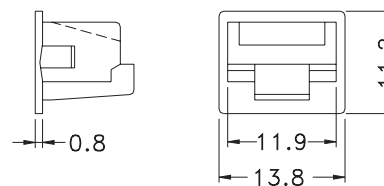
Cover 15.PJC-45



- Material: ABS (UL)
- Color: Black
- Unit: mm

Part	Pack Size
PJC-45	500

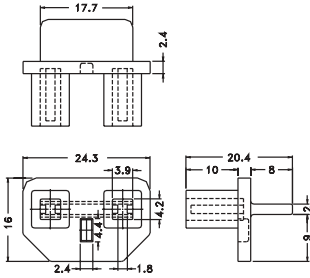
Cover 15.PJS-45



- Material: ABS (UL)
- Color: Black
- Unit: mm

Part	Pack Size
PJS-45	500

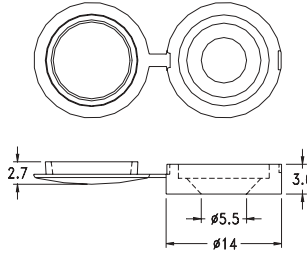
Cover 15.PLC-1



- Material: PE + EVA
- Color: Yellow
- Unit: mm

Part	Pack Size
PLC-1	500

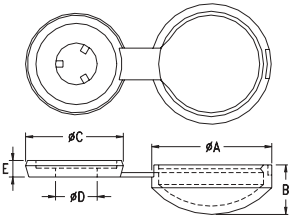
Cover 15.SCW-3



- Material: Nylon 66 (UL)
- Flame Class: 94V-2
- Color: White/Black
- Unit: mm

Part	Pack Size
SCW-3	1000

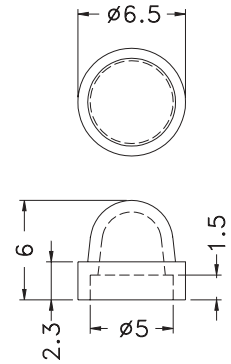
Cover 15.SCW~



- Material: Nylon 66 (UL)
- Flame Class: 94V-2
- Color: White/Black
- Unit: mm

Part	A	B	C	D	E	Color
SCW-1	9.8	4.1	8.0	3.3	1.3	1000
SCW-2	13.3	4.1	11.6	4.3	1.4	1000

Cover 15.SWV-4



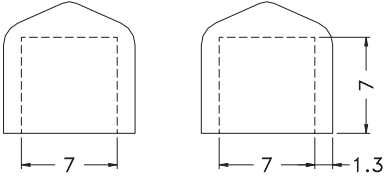
- Material: Nylon 66 (UL)
- Flame Class: 94V-2
- Color: Natural
- Unit: mm

Part	Pack Size
SWV-4	1000

COVERS

Tarapath

Cover 15.VC0707008B



- Material: Soft P.V.C.
- Unit: mm

Part	Pack Size
VC0707008B	1000