



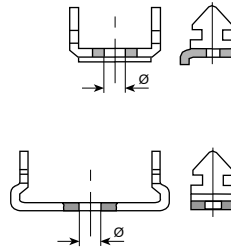
Vogt Verbindungstechnik

Verschlusshaken für Gehäuse Stahl vernickelt

Crampon pour boîtiers en acier nickelé

Receptable latches for hoods nickel-plated steel

Bestellbeispiel:
 Exemple de commande:
 Example of order:
7080



Kontakte Contacts Contacts	ø mm	Artikel-Nr. Numéro d'article Part-No.
9 - 37	3.2 2.94	7080 7540

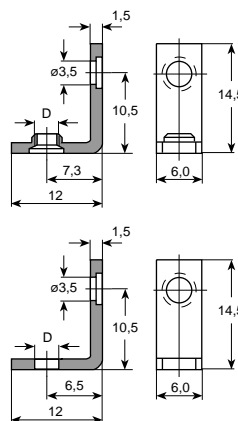
Kontakte Contacts Contacts	ø mm	Artikel-Nr. Numéro d'article Part-No.
50	3.2	7550

Befestigungswinkel Stahl verzinkt

Equerre de fixation acier zingué

Bracket zinc-plated steel

Bestellbeispiel:
 Exemple de commande:
 Example of order:
7409A.99



Kontakte Contacts Contacts	D mm	Artikel-Nr. Numéro d'article Part-No.
9 - 50	M3 UNC 4-40	7409A.99 7409U

Kontakte Contacts Contacts	D mm	Artikel-Nr. Numéro d'article Part-No.
9 - 50	ø 3.2	7409S

Sechskant-Gewinde- schrauben

Boulons hexagonals taraudés

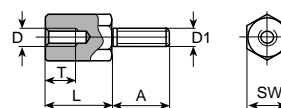
Hexagonal lock screws

Werkstoff:
 MS ni = Messing vernickelt
 ST zn = Stahl verzinkt

Matière:
 MS ni = laiton nickelé
 ST zn = acier zingué

Material:
 MS ni = nickel-plated brass
 ST zn = zinc-plated steel

Bestellbeispiel:
 Exemple de commande:
 Example of order:
7666.65



D mm	D1 mm	L mm	SW mm	T mm	A mm	Werkstoff Matière Material	Oberfläche Surface Plating	Stand.-Packg.	Artikel-Nr. Numéro d'article Part-No.
UNC 4-40	UNC 4-40	5	5	3.3	8	MS	ni	200	7666.65
UNC 4-40	UNC 4-40	4.5	5	3.3	8	ST	zn	200	7666.99
UNC 4-40	UNC 4-40	4.5	5	3.3	11	ST	zn	200	7667.99
UNC 4-40	M3	6.2	4.5	4.5	3.6	MS	ni	200	7668.65



Elektrostanzteile

Pièces découpées

Stamping parts

Werkstoff:

BZ = Bronze
CU = Kupfer
FS = Federstahl
MS = Messing
NS = Neusilber
RF = rostfreier Stahl
ST = Stahl

Matière:

BZ = bronze
CU = cuivre
FS = acier ressort
MS = laiton
NS = maillechort
RF = acier inox
ST = acier

Material:

BZ = bronze
CU = copper
FS = spring steel
MS = brass
NS = german silver
RF = stainless steel
ST = steel

Oberflächenbehandlung:

Code

bl = blank (0)
ag = versilbert (1)
au = vergoldet (2)
ni = vernickelt (5)
sn = verzinkt (8)

Traitements de surface:

Code

bl = brut (0)
ag = argenté (1)
au = doré (2)
ni = nickelé (5)
sn = étamé (8)

Surface-plating:

Code

bl = clean (0)
ag = silver-plated (1)
au = gold-plated (2)
ni = nickel-plated (5)
sn = tin-plated (8)

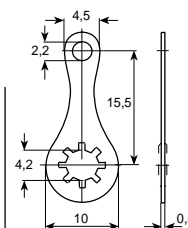
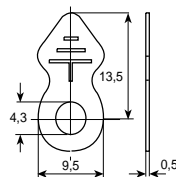
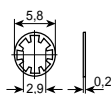
Bestellbeispiel:

Exemple de commande:

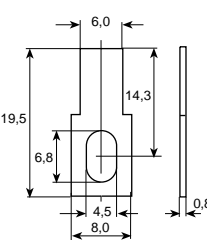
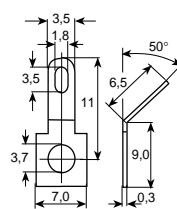
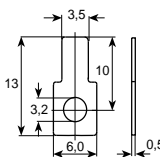
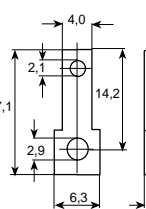
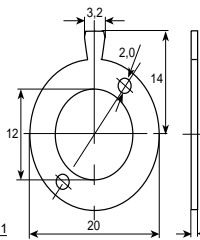
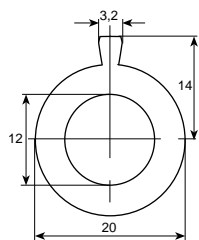
Example of order:

1551.20

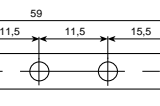
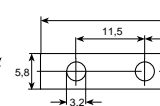
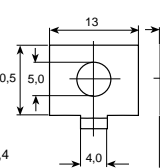
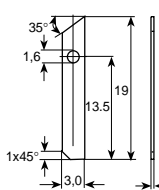
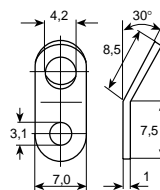
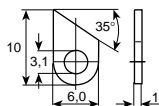
(1551 BZ bl)



Artikel-Nr. Numéro d'article Part-No.	1551.2() BZ	1555.6() MS	1556.6() MS	1557.6() MS	1558.6() MS	1559.2() BZ
D	2.9	4.3	5.3	6.4	7.4	4.2
S	0.2	0.5	0.5	0.5	0.5	0.5
Stand.-Packg.	5000	2000	2000	2000	2000	1000



Artikel-Nr. Numéro d'article Part-No.	1595.9() ST	1595B.9() ST	1590.6() MS	1591.6() MS	1592.6() MS	1593.6() MS
D	12.0	12.0	2.9	3.2	3.7	4.5
S	1.0	1.0	0.5	0.5	0.3	0.8
Stand.-Packg.	500	500	2000	2000	2000	1000



Artikel-Nr. Numéro d'article Part-No.	1605.9() ST	1562F.9() ST	1611.6() MS	1610.9() ST	1567.6() MS
D	3.1	3.1	1.6	5.0	3.2
S	1.0	1.0	0.4	1.5	0.5
Stand.-Packg.	2000	1000	2000	500	200



Elektrostanzteile

Pièces découpées

Stamping parts

Artikel-Nr. Numéro d'article Part-No. → 1409.5 () FS	1563.4 () CU	1564.4 () CU	1565.4 () CU	1602.6 () MS
D - S 0.3	D 3.0 S 0.5	D 3.0 S 0.5	D 3.0 S 0.5	D 6.5 S 0.8
Stand.-Packg. 2000	500	500	500	500

Artikel-Nr. Numéro d'article Part-No. → 1562K.6 () MS	1562A.6 () MS	1562B.6 () MS	1562L.6 () MS	1562C.6 () MS	1562D.8 () RF
D 3.2 S 0.5	D 4.2 S 0.5	D 5.3 S 0.5	D 4.5 S 0.5	D 4.5 S 0.8	D 4.3/6.3 S 1.0
Stand.-Packg. 1000	2000	1000	500	1000	200

Artikel-Nr. Numéro d'article Part-No. → 1098R.6 () MS	1404.9 () ST	1407.6 () MS	1402.6 () MS	1403.6 () MS	1408.6 () MS
D M3 S 1.5	D M3 S 1.5	D M3 S 1.0	D M3 S 2.0	D M3 S 2.0	D M3 S 1.2
Stand.-Packg. 2000	1000	1000	1000	1000	1000

Artikel-Nr. Numéro d'article Part-No. → 1609.9 () ST	1406.6 () MS	1405.6 () MS	1604.7 () NS	1614.7 () NS	6431A.9 () ST
D M3 S 1.0	D M3.5 S 2.0	D M3.5 S 2.0	D M4 S 1.5	D M4 S 1.5	D M4 S 2.0
Stand.-Packg. 1000	1000	500	500	1000	500